

Bracken Close

Boley Park, Lichfield, WS14 9RU

John German



John German



Bracken Close

Boley Park, Lichfield, WS14 9RU

£550,000

A spacious detached bungalow occupying a generous corner plot boasting three double bedrooms and a detached double garage, located within the ever-desirable Boley Park area of Lichfield.

This well-presented detached bungalow enjoys a spacious corner plot on Bracken Close in Lichfield. The highly sought after location of Boley Park in Lichfield offers a range of shops, a local pub, and a recently refurbished Co-op supermarket. Nearby road links include the A38, A5 and M6 Toll Road. Lichfield has two rail stations - Lichfield City station and Lichfield Trent Valley offering services to London Euston, Birmingham and many more. Lichfield's city centre is home to a range of boutique shops, cosy cafes, thriving markets, excellent schools and a fantastic selection of restaurants, bars, and pubs.

Enjoying a sought-after cul-de-sac location within the popular Boley Park area of Lichfield, this spacious detached bungalow boasts three double bedrooms, landscaped gardens including a wealth of established shrubs together with lawned and patio areas plus a detached double garage and block paved driveway.

Internally the property comprises; An entrance door opens into the hallway with Karndeian flooring and access to a useful storage cupboard, originally a guest cloakroom and now providing a large storage space.

There are three spacious double bedrooms all of which benefit from having fitted wardrobes and the master bedroom further benefiting from its own en-suite shower room while the other two bedrooms are serviced by the family bathroom comprising a corner bath, low level WC, wash hand basin, and window to the rear aspect.

There is a spacious living room with window to the front aspect, glazed sliding doors leading out to the rear garden, coved ceiling, two ceiling roses, carpeted flooring and a feature stone fireplace with fitted fire.

The kitchen/diner is fitted with an extensive range of oak base, wall, drawer and display units with complementary work tops, splashback tiling, an inset one and a half bowl acrylic sink unit with mixer tap, a range of built in appliances, Karndeian flooring, two windows to the rear aspect, coved ceiling, two ceiling light points and a door to the rear garden.

Outside this spacious bungalow enjoys a corner position featuring a detached double garage with twin remote controlled roller shutter doors along with power, lighting, and roof storage space. A block paved driveway provides ample off-road parking. The well-kept front and side lawned gardens have a variety of plants, trees and shrubs. To the rear of the bungalow is an enclosed garden with various seating areas, decorative barked areas, garden shed and a variety of plants, trees and shrubs.

Tenure: Freehold (purchasers are advised to satisfy themselves as to the tenure via their legal representative).

Please note: It is quite common for some properties to have a Ring doorbell and internal recording devices.

Property construction: Traditional

Parking: Drive and double garage

Electricity supply: Mains

Water supply: Mains

Sewerage: Mains

Heating: Mains gas

(Purchasers are advised to satisfy themselves as to their suitability).

Broadband type: Fibre - See Ofcom link for speed: <https://checker.ofcom.org.uk/>

Mobile signal/coverage: See Ofcom link <https://checker.ofcom.org.uk/>

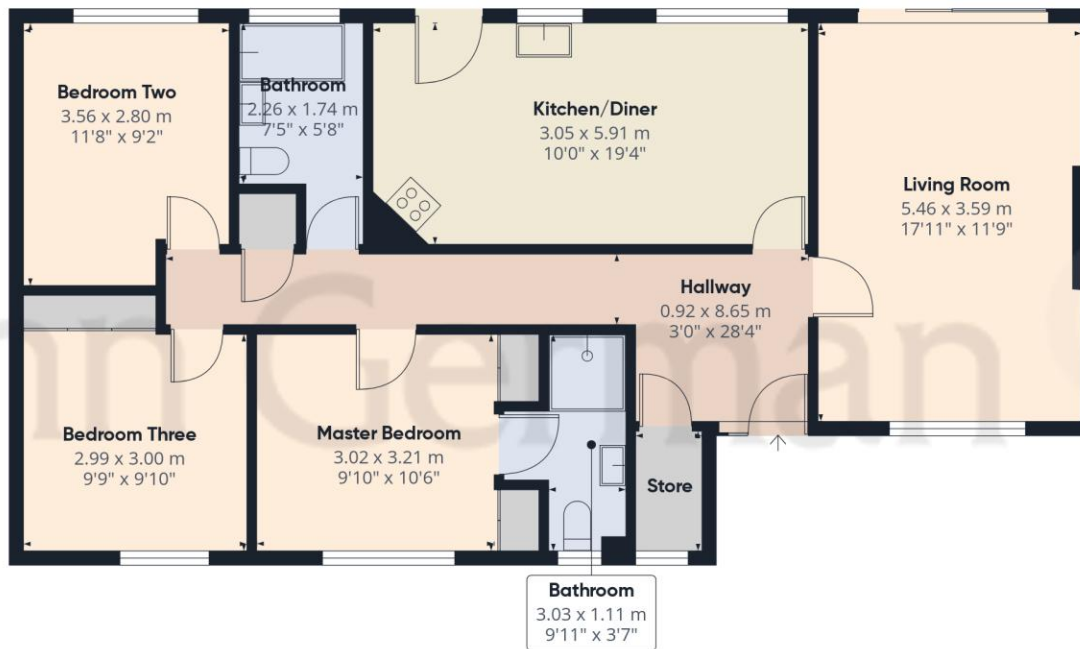
Local Authority/Tax Band: Lichfield District Council / Tax Band E

Useful Websites: www.gov.uk/government/organisations/environment-agency

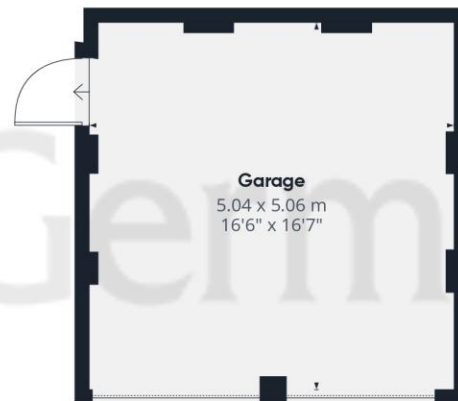
Our Ref: JGA/28052026







Ground Floor Building 1



Ground Floor Building 2

Approximate total area⁽¹⁾

115.2 m²

1239 ft²

(1) Excluding balconies and terraces

Calculations reference the RICS IPMS 3C standard. Measurements are approximate and not to scale. This floor plan is intended for illustration only.

GIRAFFE360



The property information provided by John German Estate Agents Ltd is based on enquiries made of the vendor and from information available in the public domain. If there is any point on which you require further clarification, please contact the office and we will be pleased to check the information for you, particularly if contemplating travelling some distance to view the property. Please note if your enquiry is of a legal or structural nature, we advise you to seek advice from a qualified professional in their relevant field.

We are required by law to comply fully with The Money Laundering Regulations 2017 and as such need to complete AMLID verification and proof / source of funds checks on all buyers and, where relevant, cash donors once an offer is accepted on a property. We use the Checkboard app to complete the necessary checks, this is not a credit check and therefore will have no effect on your credit history. With effect from 1st March 2025 a non-refundable compliance fee of £30.00 inc. VAT per buyer / donor will be required to be paid in advance when an offer is agreed and prior to a sales memorandum being issued.

Agents' Notes

These particulars do not constitute an offer or a contract neither do they form part of an offer or contract. The vendor does not make or give and Messrs. John German nor any person employed has any authority to make or give any representation or warranty, written or oral, in relation to this property. Whilst we endeavour to make our sales details accurate and reliable, if there is any point which is of particular importance to you, please contact the office and we will be pleased to check the information for you, particularly if contemplating travelling some distance to view the property. None of the services or appliances to the property have been tested and any prospective purchasers should satisfy themselves as to their adequacy prior to committing themselves to purchase.

Referral Fees

Mortgage Services - We routinely refer all clients to APR Money Limited. It is your decision whether you choose to deal with APR Money Limited. In making that decision, you should know that we receive on average £60 per referral from APR Money Limited.

Conveyancing Services - If we refer clients to recommended conveyancers, it is your decision whether you choose to deal with this conveyancer. In making that decision, you should know that we receive on average £150 per referral.

Survey Services - If we refer clients to recommended surveyors, it is your decision whether you choose to deal with this surveyor. In making that decision, you should know that we receive up to £90 per referral.

Score	Energy rating	Current	Potential
92+	A		
81-91	B		
69-80	C	69 C	77 C
55-68	D		
39-54	E		
21-38	F		
1-20	G		

John German
 22 Bore Street, Lichfield,
 Staffordshire, WS13 6LL
 01543 419121
 lichfield@johngerman.co.uk



Ashbourne | Ashby de la Zouch | Barton under Needwood
 Burton upon Trent | Derby | East Leake | Lichfield
 Loughborough | Stafford | Uttoxeter

JohnGerman.co.uk Sales and Lettings Agent

