

OVER 60?

Secure this property
for up to **59% less!**



Guide Price
£450,000
Freehold

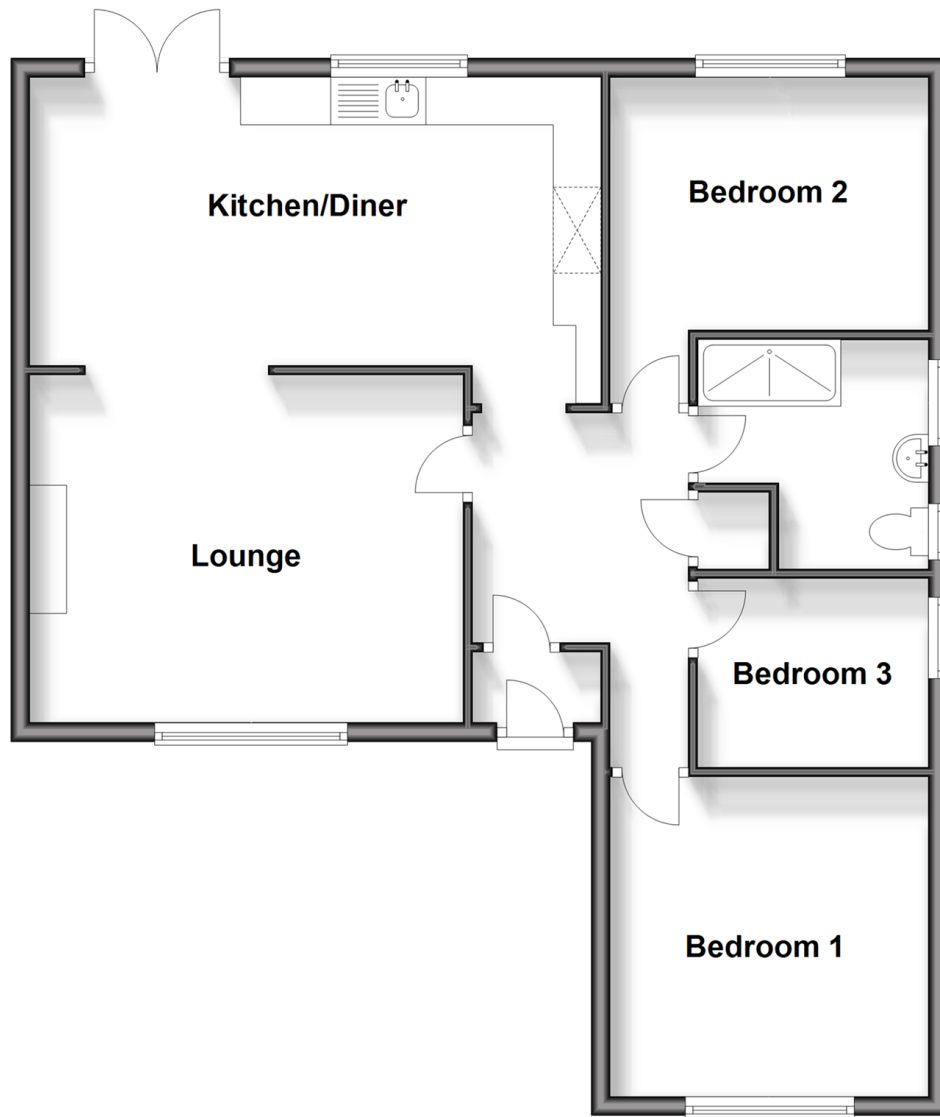
3x  1x  2x 

Courtlands, Teston, Maidstone, Kent, ME18

Wards
Helping you move forwards

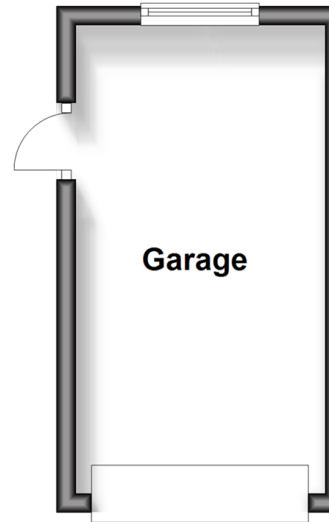
Ground Floor

Approx. 77.2 sq. metres (830.8 sq. feet)



Outbuilding

Approx. 12.9 sq. metres (138.5 sq. feet)



Accommodation

GROUND FLOOR

Entrance Porch

Entrance Hall

Lounge: 14'9 x 11'9 (4.50m x 3.58m)

Kitchen/Diner: 21'0 x 10'0 (6.41m x 3.05m)

Bedroom 1: 10'9 x 10'9 (3.28m x 3.28m)

Bedroom 2: 10'9 x 9'0 (3.28m x 2.75m)

Bedroom 3: 7'6 x 6'2 (2.29m x 1.88m)

Shower Room

OUTSIDE

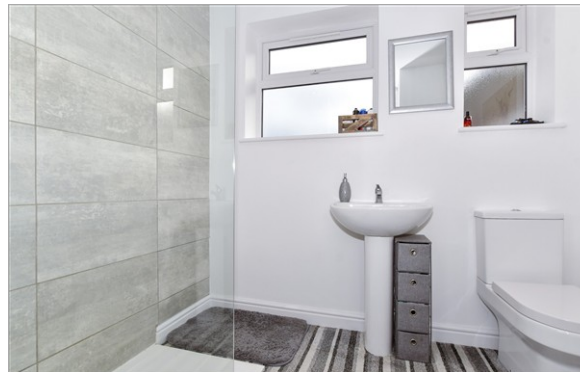
Large front Garden

Large Rear Garden

Driveway

OUTBUILDING

Garage



Main features

- Desirable & attractive semi detached bungalow
- Refurbished throughout in 2015
- High specification accommodation & move in ready
- A large secluded plot with lovely landscaped gardens
- Garage, driveway & quiet cul de sac setting



Nearest Schools

Primary Schools: Watringbury C of E Primary 0.9 miles, The Discovery School 1.4 miles, Barming Primary 1.5 miles
Secondary Schools: Bower Grove School 2.1 miles, The Malling School 2.3 miles, Oakwood Park Grammar School 2.6 miles



Transport Information

Train Stations: Watringbury 1.0 miles, East Malling 2.5 miles, East Farleigh 2.5 miles



Address

Courtlands, Teston, Maidstone, Kent, ME18



Directions

For directions to this property please contact us.



Wards
Helping you move forwards

Call Kings Hill Branch 01732 222211 ■ wardsofkent.co.uk



- The seller is a person connected with Wards as defined in the Estate Agents Act 1979
- Appliances & services are untested, dimensions are approximate and floor plans are not to scale

- Legal advice should be taken to verify fixtures/fittings, planning, alterations and/or lease details
- Through a Homewise Home For Life Plan people aged 60+ can secure this property for up to 50% less, by purchasing a Lifetime Lease.



12405081/20251011/SW/GD