

for sale

£220,000



Hatfield Drive Bridgwater TA6 4YG

Modern TWO DOUBLE BEDROOM property with open plan ground floor, low maintenance rear garden and two allocated parking spaces. PERFECTLY LOCATED for the M5 motorway and Hinkley point.



Hatfield Drive Bridgwater TA6 4YG

Entrance Hall

Stairs to first floor and radiator.

Kitchen

Double glazed window to the front aspect, space for fridge/freezer, hob and oven. Good amount of work surface space, including the breakfast bar which defines the Kitchen area from the Lounge.

Wc

WC, wash basin, radiator and extractor fan

Lounge

French doors to the rear aspect and the radiators. Access to WC.

First Floor Landing

Access to loft which is well insulated. No loft ladder or light.

Bedroom One

Double glazed window to the rear aspect. Radiator.

Bedroom Two

Double glazed window to the front aspect. Radiator.

Bathroom



With mains shower over the fully tiled bath. WC, wash basin, extractor fan and radiator.

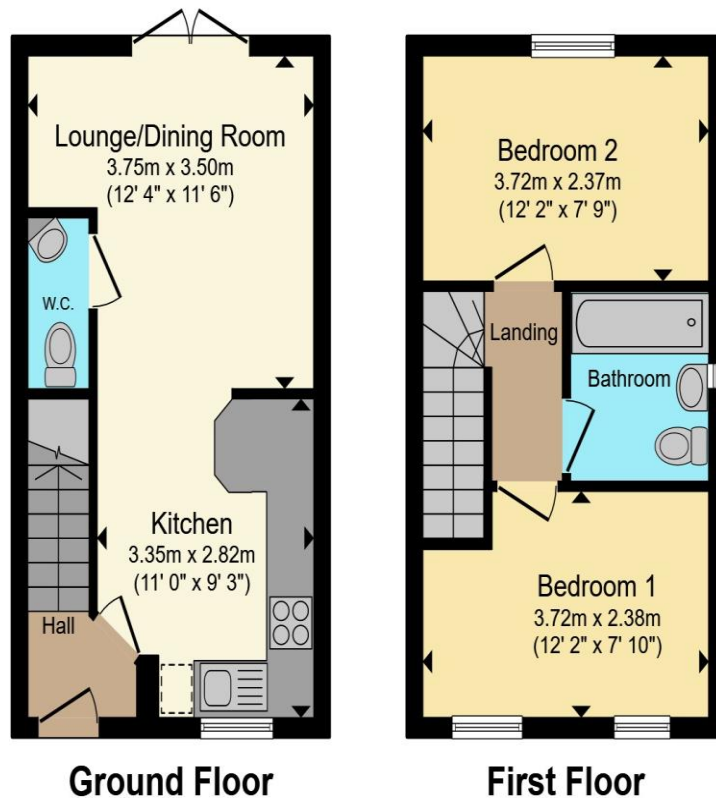
Rear Garden

Low maintenance rear garden with decking area at the end of the garden. Side gate leading to the parking

Parking

Side by side private drive for 2 cars.





Total floor area 51.7 m² (557 sq.ft.) approx

This floor plan is for illustrative purposes only. It is not drawn to scale. Any measurements, floor areas (including any total floor area), openings and orientation are approximate. No details are guaranteed, they cannot be relied upon for any purpose and they do not form part of any agreement. No liability is taken for any error, omission or misstatement. A party must rely upon its own inspection(s). Powered by www.propertybox.io

Connells

To view this property please contact Connells on

T 01823 334 433
E taunton@connells.co.uk

53 High Street
 TAUNTON TA1 3PR

Property Ref: TTN313365 - 0007

Tenure: Freehold EPC Rating: B

Council Tax Band: B

view this property online connells.co.uk/Property/TTN313365



1. MONEY LAUNDERING REGULATIONS Intending purchasers will be asked to produce identification documentation at a later stage and we would ask for your co-operation in order that there will be no delay in agreeing the sale. 2. These particulars do not constitute part or all of an offer or contract. 3. The measurements indicated are supplied for guidance only and as such must be considered incorrect. Potential buyers are advised to recheck measurements before committing to any expense. 4. We have not tested any apparatus, equipment, fixtures, fittings or services and it is in the buyers interest to check the working condition of any appliances.

Connells Residential is registered in England and Wales under company number 1489613, Registered Office is Cumbria House, 16-20 Hockliffe Street, Leighton Buzzard, Bedfordshire, LU7 1GN. VAT Registration Number is 500 2481 05.

see all our properties at www.connells.co.uk | www.rightmove.co.uk | www.zoopla.co.uk