



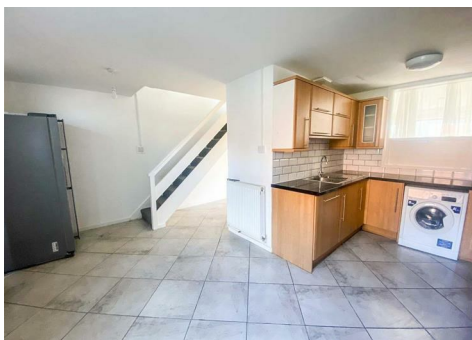
**BRITISH
PROPERTY
AWARDS**

2021 - 2022

★★★★★

GOLD WINNER

LETTING AGENT
IN COVENTRY
(CENTRE)

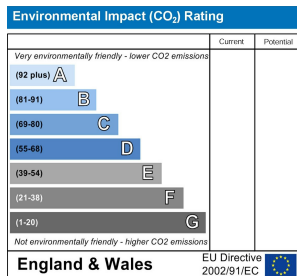
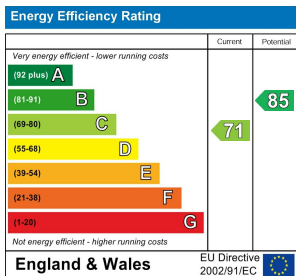


24 Lyndale Road, Coventry, CV5 8AX

*** AVAILABLE NOW - DEPOSIT ALTERNATIVE AVAILABLE *** This three bedroom terraced property is situated in Whoberley, Coventry. The property briefly comprises of a porch, a spacious front lounge with TV, an attractive modern kitchen with gas oven and hob, a large fridge freezer, a washing machine and dryer, a dining room, a downstairs WC, two double bedrooms, a large single bedroom and a family bathroom. The house benefits from double glazing, gas central heating, loft storage and a small rear garden, the property has also been newly redecorated throughout.

- AVAILABLE NOW - DEPOSIT ALTERNATIVE AVAILABLE
- Three Bedroom Terraced Property
- Unfurnished
- Gas Central Heating
- On Street Parking
- Two Double Bedrooms
- Front and Rear Garden

£1,050 PCM



29 Warwick Row, Coventry, West Midlands, CV1 1DY
 Tel: 02476 635555 Email: coventry@sbklettings.co.uk

