



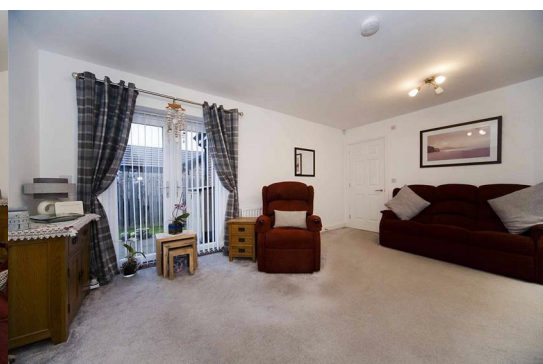
## 35 Gregory Gardens

, Hartlepool, TS25 4FE

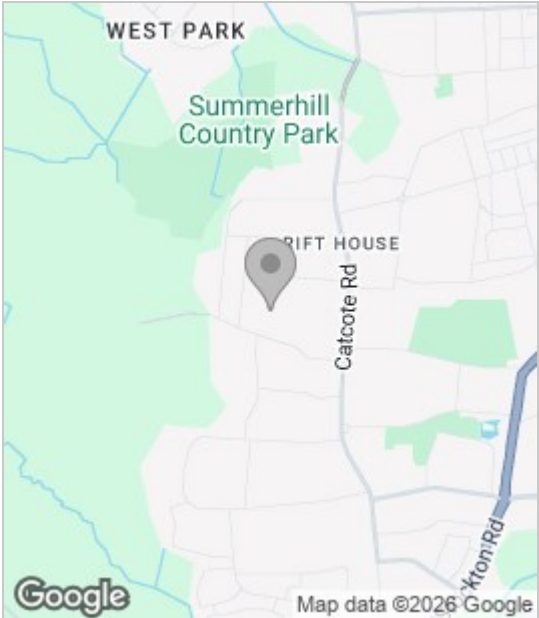
**£150,000**



75% SHARED OWNERSHIP!! Over 55's!! Igomove happy to market this fabulous three bedroom detached bungalow located on a small modern development, this immaculate home offers good size accommodation and many desirable features which include; three lovely bedrooms, modern shower room/wet room, excellent lounge/dining room/contemporary kitchen, gardens and two car driveway, electric car charge point, solar panels owned outright, UPVC double glazing, gas central heating, fitted blinds, neutral decor throughout, leasehold. Speak to agent re criteria, monthly management fee applies which includes building insurance and external maintenance.



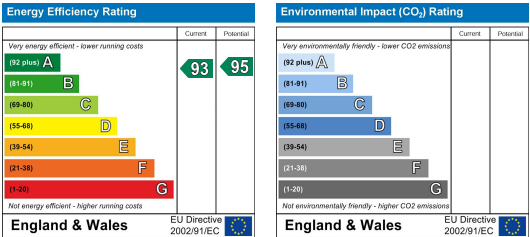
Area Map



Floor Plan



Energy Efficiency Graph



These particulars, whilst believed to be accurate are set out as a general outline only for guidance and do not constitute any part of an offer or contract. Intending purchasers should not rely on them as statements of representation of fact, but must satisfy themselves by inspection or otherwise as to their accuracy. No person in this firms employment has the authority to make or give any representation or warranty in respect of the property.