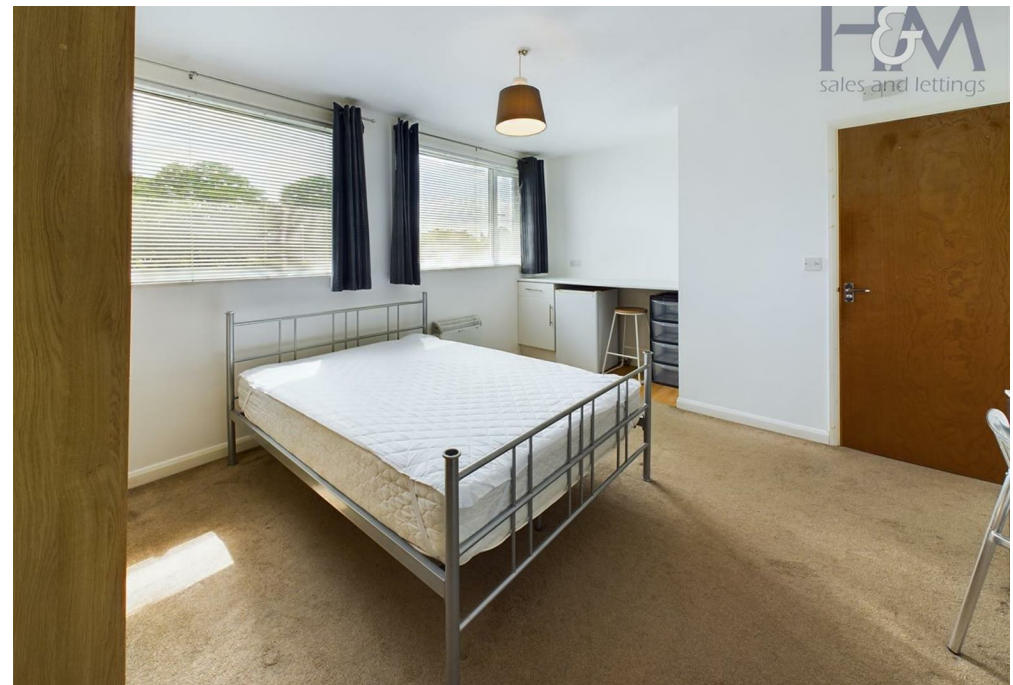
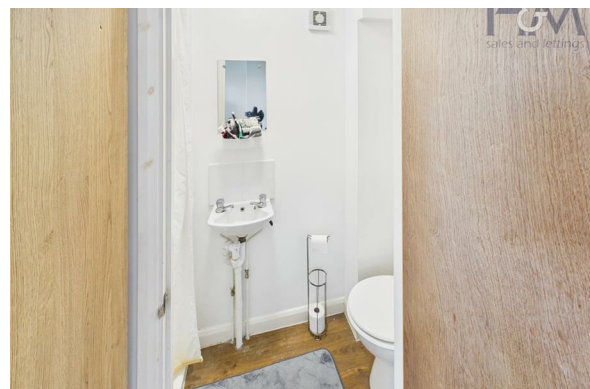


# Wisden Road, Stevenage, SG1 5JJ

£800 Per Month



Homes and Mortgages are pleased to present a spacious bedroom with an en-suite in a shared house located in the Pin Green area of Stevenage. The room comes fully furnished with a double bed, desk wardrobe, and fridge. Residents have access to a shared kitchen and dining room on the ground floor. This room is available exclusively for a single working professional. All bills are included except for electricity and WiFi. Available from 29th June! Contact us to schedule a viewing.



86 High Street  
 Stevenage  
 Hertfordshire  
 SG1 3DW  
 01438 728444

[stevenage@homesandmortgages.co.uk](mailto:stevenage@homesandmortgages.co.uk)

**Energy Efficiency Rating**

	Current	Potential
<i>Very energy efficient - lower running costs</i>		
(92 plus) <b>A</b>		
(81-91) <b>B</b>		
(69-80) <b>C</b>		
(55-68) <b>D</b>		
(39-54) <b>E</b>		
(21-38) <b>F</b>		
(1-20) <b>G</b>		
<i>Not energy efficient - higher running costs</i>		
<b>England &amp; Wales</b>	EU Directive 2002/91/EC 