

Plot 5 Dol Uchaf, Mold - CH7 5LG

£645,000

Luxury Living in an Exclusive New Development

Discover an exceptional collection of ten luxury family homes, expertly designed for modern living. Each residence boasts expansive living spaces, including a stunning first-floor lounge with a double-height ceiling, a spacious open-plan kitchen, and dedicated study and snug areas.

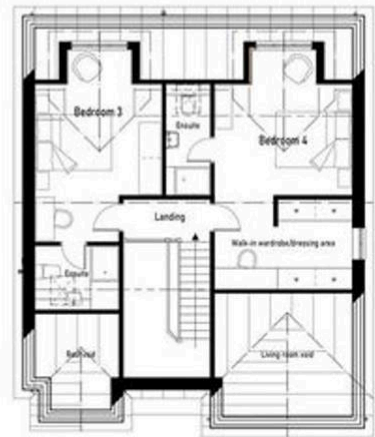
Enjoy four generous reception rooms, four double bedrooms, three en-suites, and a stylish family bathroom. With a large rear garden, ample parking, and an integral garage, these homes provide the ultimate in comfort, luxury, and tranquility.



GROUND FLOOR PLAN



FIRST FLOOR PLAN



SECOND FLOOR PLAN



Room	Area (sqm)	Area (sqft)	Volume (cu m)
Living Space	18.5	200	185
Kitchen	10.5	113	100
Bedroom 1	12.5	135	120
Bedroom 2	11.5	124	105
Bedroom 3	11.5	124	105
Bedroom 4	11.5	124	105
Bathroom	5.5	59	50
WC	1.5	16	14
Utility	4.5	48	40
Snug	3.5	38	32
Living room view	1.5	16	14
Garage	15.0	161	135
Total	88.5	949	770

Residential Development - Land adjacent to Siglen Ucha, Ruzhin Road, Gwernymynydd, Flintshire		 Paterson Macaulay & Owens Chartered Surveyors 100, The Quadrant, London, E1 1RN
Planning: House Type A - Ground Floor Plan, First Floor Plan & Second Floor Plan		



YOUR FREE PROPERTY REPORT



WE OFFER FREE ADVICE
MORTGAGES - SURVEYS - SOLICITORS

