



## 2 Buttercup Drive, Moorside OL4 2QS

£495,000

 4  2  2

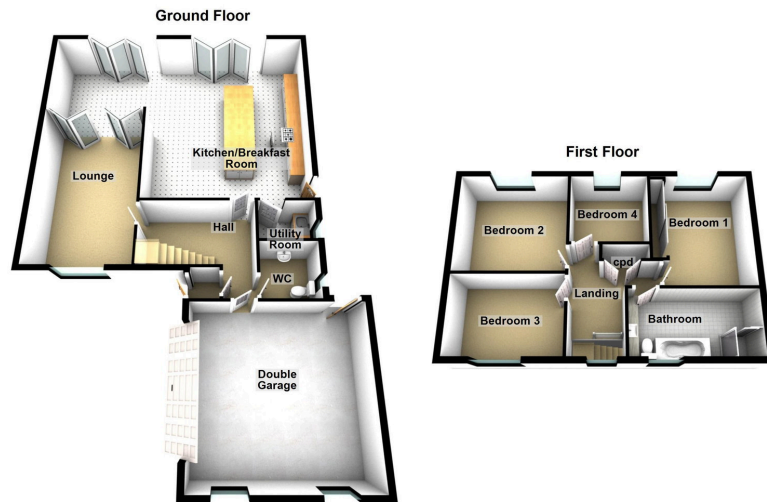


- Impressive Detached Family Home
- Over 1750 Sq Ft Of Living Accommodation
- Four Bedrooms
- Double Garage
- Immaculate Condition Throughout
- Kitchen By Housing Units
- Oak/ Glass Staircase
- EPC:



WOW !! Unless you want to spend £500k do not view this house, because YOU will want to live there !

Offered in what can only be described as immaculate is this four bedroom detached family home that has been extended to create a masterpiece of a living kitchen. Accommodation comprising: Entrance hallway with oak/glass staircase, Extended W.C, lounge, kitchen/living/dining room and a utility room. To the first floor are four bedrooms and an extended four piece bathroom. Externally there is a very private west facing rear garden where you can spend those lovely early evenings enjoying the sunshine. To the front is a dual driveway and a sweeping lawn area. The property is nestled in a cul de sac just off Haven Lane in Moorside. Local walks to Strinesdale and beyond are on the doorstep. Local shops and amenities within easy reach.



#### Chadderton Office

509 Middleton Road,  
Chadderton, Oldham,  
OL9 9SH

chadderton@kirkham-property.co.uk  
t: 0161 626 5688