

DOMUS NOVA



Ses Calas, Santa Eulalia

€14.750.000



A sprawling estate, nestled in the hills above Santa Eulalia that's elevated in every sense. Step through the gates at Ses Calas and calm descends. As far as the eye can see, sea views and rolling hills – scenes best enjoyed from one of the four panoramic terraces on offer.

Bohemian in nature, the estate encompasses a main house, Diego (named after artist Diego Rivera) as well as a hacienda-style guest house, Frida (after Frida Kahlo). Conceived by Ibiza Living, the design is both timeless and contemporary. Simple lines, geometric shapes and a minimalist sensibility anchor both buildings in the surrounding landscape. Tiered over multiple levels, an 18-metre pool and terrace sit at the estate's peak. Its south-west facing position is primed for sunrise and sunset. There's also a multi-purpose pool house with picture windows out to the ocean and a peaceful landscaped garden.





















“ Simple lines, geometric shapes and a minimalist sensibility anchor both buildings in the surrounding landscape.

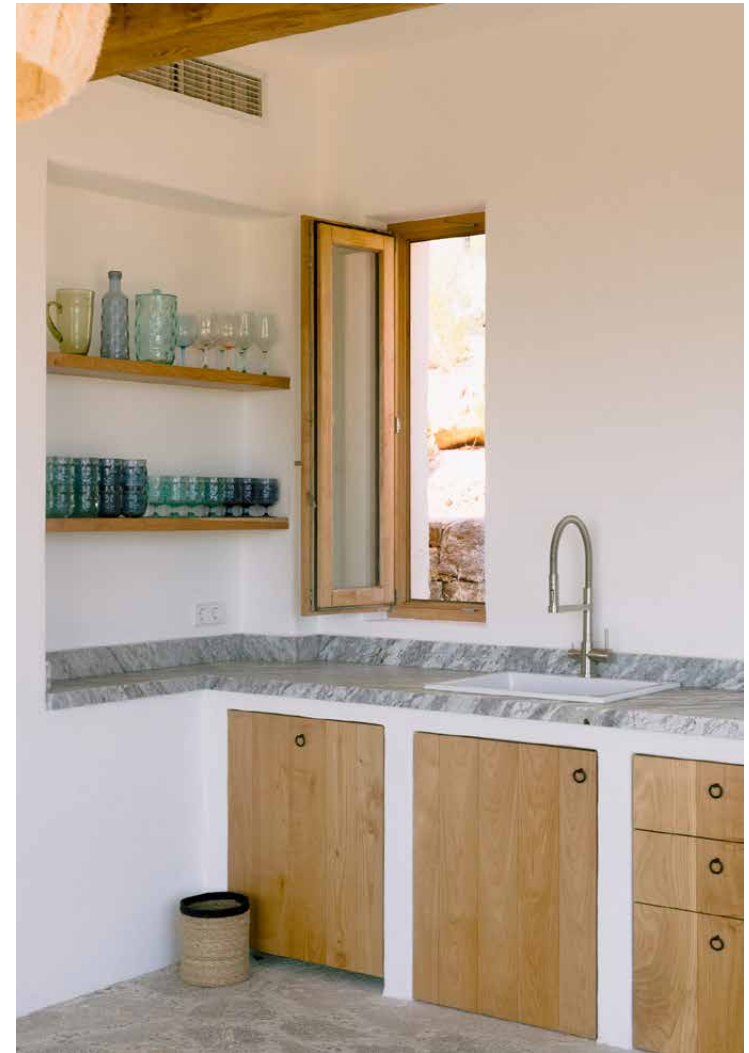








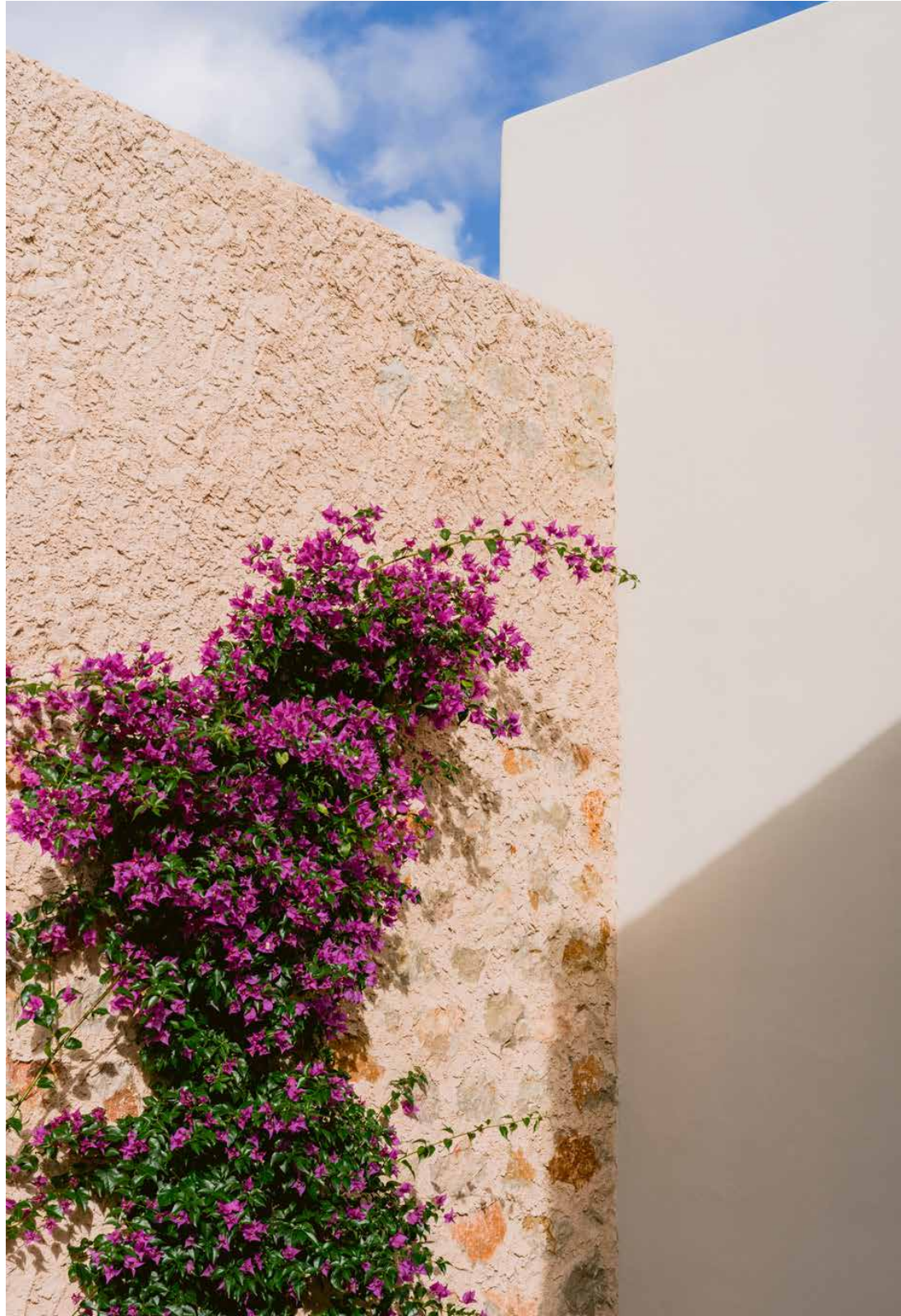
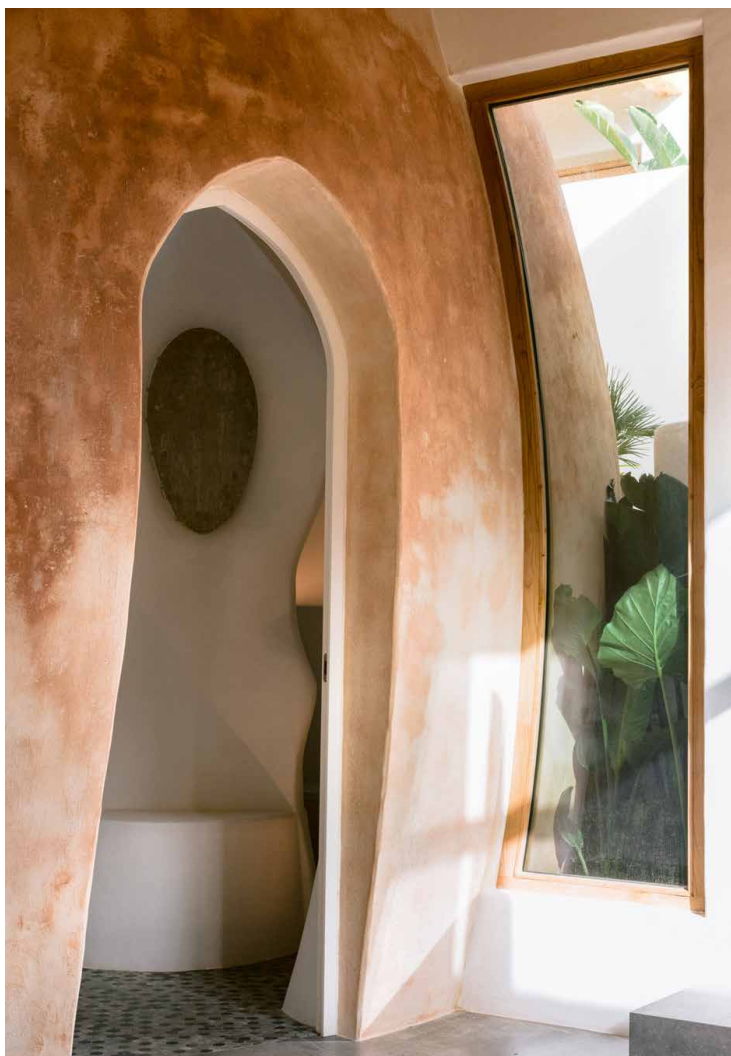




















The main house is inverted to make the most of these views. On the upper floor sits a sociable kitchen with a granite worktop that extends towards a circular dining table. Chestnut beams crisscross the ceiling, while floor-to-ceiling windows lead outside to a pergola and terrace that sets you among the treetops.

Downstairs, there's a separate living room and four bedroom suites, each with views of the Ibicencan countryside. In the master, stepping stones placed over pebbles pave the way to a freestanding bath and rainfall shower. Other features echo the landscape beyond – like the egg-shaped bathroom and a central courtyard with bubbling fountain and stone sundial.













The guest house is very much a product of its environment, too. Rock formations protrude from the floor in the living room, serving as a reminder that the building has been hewn into the hillside.

From here, the open-plan kitchen and dining room overlooks a terrace with a circular infinity pool and another round of endless views. There's also a shaded pergola for al fresco dining. Upstairs, three of the four bedrooms have interconnecting access to a shared terrace.





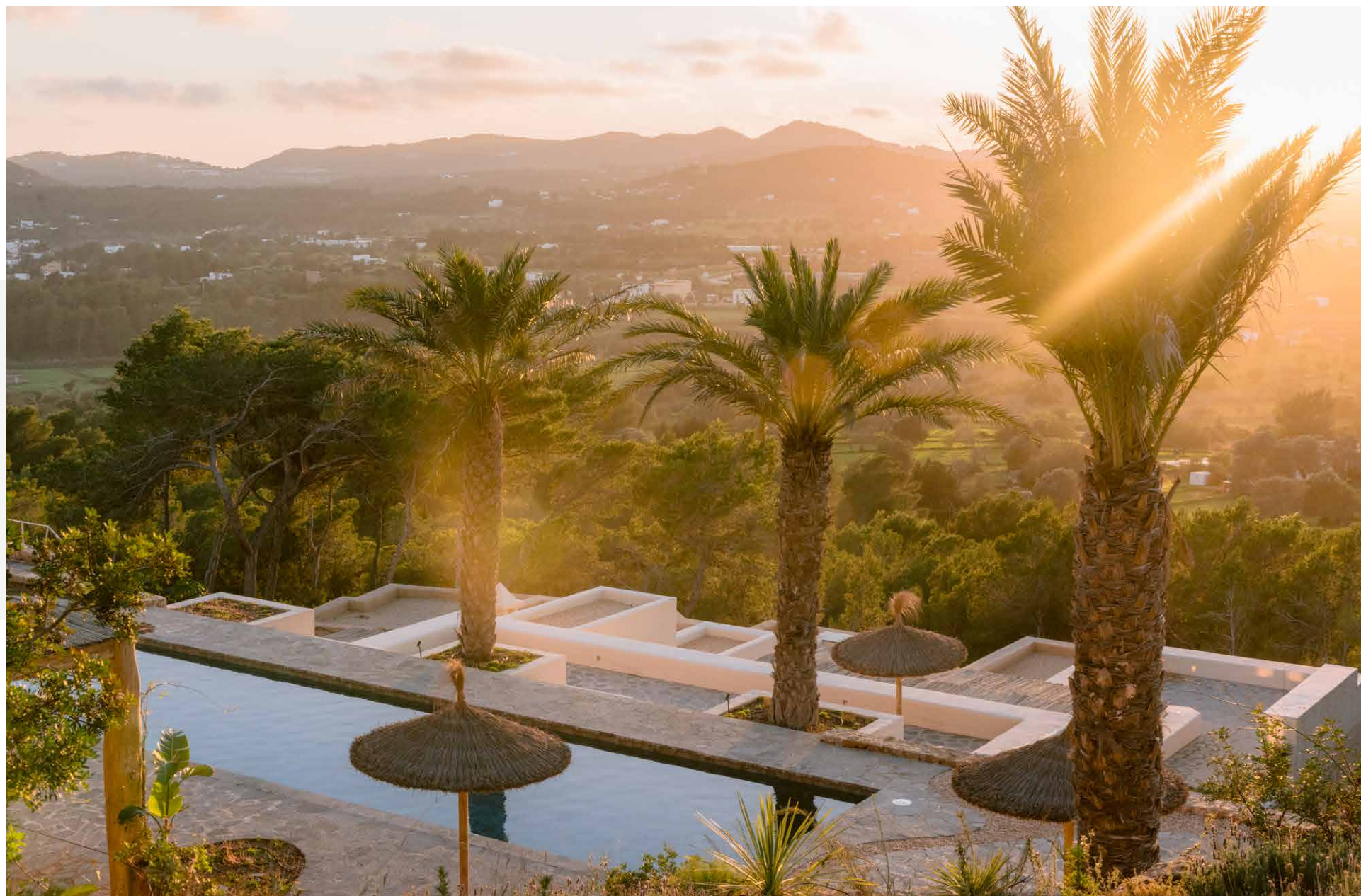
















Property Details

8 Bedrooms, 8 Bathrooms
Main house with four bedrooms and bathrooms
A further four en suite bedrooms in the guest house
Two swimming pools
Separate pool house
Spectacular countryside and sea views
Sunset and sunrise views
Gated entrance and private driveway
Parking space for multiple cars
Integrated air conditioning and underfloor heating throughout
Additional out-house for a gym, studio or playroom.

Main House: 623 sq m
Second House: 545 sq m
Plot Size: 22,000 sq m



Location

Surveying Santa Eulalia from its lofty position, Ses Calas offers a gateway to an authentic, slower pace of life, and a year-round community. World-class restaurants, art galleries and shops are in plentiful supply in the surrounding region, although the vibe remains refreshingly laid-back. Stroll along the palm-lined promenade and yacht marina, peruse the hippy markets at Es Canar or catch the sunrise from the wide sandy shores of Cala Llonga.

Ibiza airport (20 mins)

Santa Eulalia (10 mins)

Cala Llonga (10 mins)

Specialising in Ibiza and
London's design-led homes

Let's talk
+34 871 515 302
ibiza@domusnova.com
domusnova.com/ibiza

The property particulars are a guide not statements. Descriptions, photographs, and plans are for guidance and should be checked a prospective purchaser or tenant. The Property is offered "subject to contract". No warranties, representations, or Tenancy is given by Domus Nova. Expenses incurred by a prospective tenant or buyer will not be reimbursed if the Landlord or the Seller withdraws prior to the Tenancy Agreement being signed, dated and exchanged and cleared funds received. Further details of the Disclaimer together with trading names and our Privacy Policy is shown on our website The IVA position relating to the property may change without notice.

View our privacy policy on how your data is processed and used. To find out how we process Personal Data, please refer to our Privacy Statement and other notices at [Privacy Statement](#).

© Domus Nova 2025. All rights reserved.