



14 Bridgeman Court  
Weston-Under-Lizard, TF11 8QH

peterjames  
PROPERTY

# 14 Bridgeman Court

Albrighton – 6.5 miles

Shifnal – 15.3 miles

(Distances are approximate)

Well-presented One bedroom luxury mews apartment in an exclusive private development .  
Quietly positioned on the edge of beautiful Shropshire and Staffordshire Countryside

Entrance hallway with storage cupboards

Smartly appointed shower room

Double aspect, lounge with a feature electric fire

Well-designed kitchen diner with integrated double oven, induction hob, fridge and dishwasher

Cosy main bedroom

Charming private garden with patio and landscaped beds

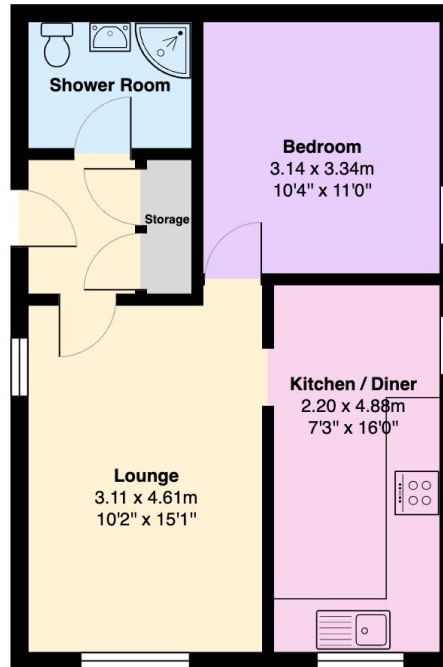
Garage with electric and plumbing supply, perfect for utility use

Shared driveway parking

Offered fully furnished







Total Area: 45.8 m<sup>2</sup> ... 493 ft<sup>2</sup>

INTERNAL FLOOR AREAS ARE APPROXIMATE FOR GENERAL GUIDANCE ONLY -  
NOT TO SCALE POSITION & SIZE OF DOORS, WINDOWS, APPLIANCES AND OTHER FEATURES ARE APPROXIMATE TOTAL SIZE INC GARAGE/STORAGE AREAS  
(PLANS DRAWN BY JOEWPHTOGRAPHY.CO.UK)

**EPC** - The EPC is attached to these particulars. If it has become detached or is lost, please contact us for a further copy.

**Fixtures and Fittings** - All carpets and curtains are excluded from the sale but may be available by separate negotiation.

**peterjames**  
PROPERTY

2 High Street, Tettenhall, WV6 8QT  
Tel: 01902 754777

Email: [sales@peterjamesproperty.com](mailto:sales@peterjamesproperty.com)  
[www.peterjamesproperty.com](http://www.peterjamesproperty.com)