



North End Road

Golders Green, NW11

£4,500 per month
(£1,038.46 per week)

VIDEO TOUR AVAILABLE. A lovely 4 bedroom semi detached family house over 2 floors with a pretty rear garden and garage. The property is situated in this excellent location for the amenities of Golders Green (Northern Line) and within walking distance to the open green spaces of Hampstead Heath and Golders Hill Park. Accommodation comprises ground: 2 reception rooms, fully fitted eat in kitchen 1st floor: master bedroom with en-suite bathroom, 3 further bedrooms, family bathroom.

CHESTERTONS



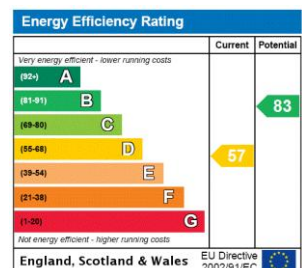
North End Road

Golders Green, NW11

- A Lovely Semi Detached Family House over 2 Floors
- 4 Bedrooms, 2 Bathrooms, 2 Receptions, Eat In Kitchen
- Pretty Rear Garden & Garage
- Excellent Location in Golders Green (Northern Line), Walking Distance to the Open Green Spaces of Hampstead Heath and Golders Hill Park



Deposit Required: £6,230.77
Local Authority: London Borough of Barnet
Council Tax Band: G
EPC Rating: D
Unfurnished

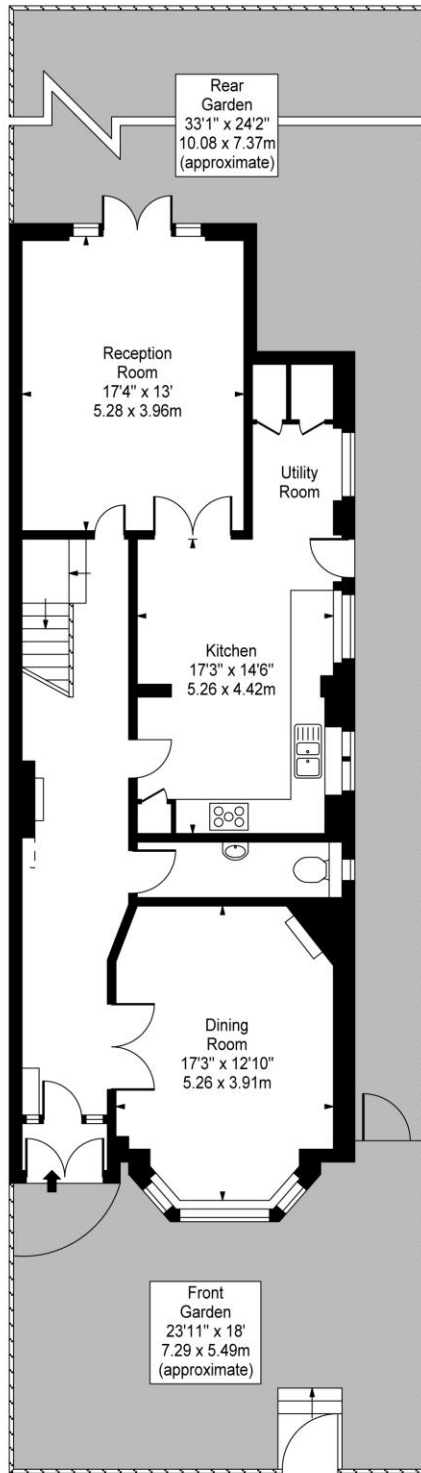


Chestertons Hampstead Lettings

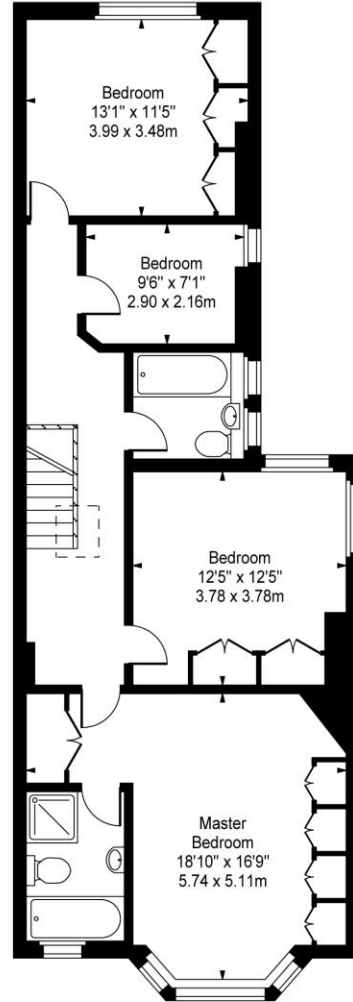
55-56 Hampstead High Street
 Hampstead
 London
 NW3 1QH
hampsteadlettingsusers@chestertons.co.uk
 02077941125
chestertons.co.uk

Additional tenant charges apply (fees apply to non-AST tenancies only)
 Tenancy Agreement Fee: £300
 References per Tenant/Guarantor: £60
 Inventory check (approx. £100 – £250 inc. VAT)
chestertons.co.uk/property-to-rent/applicable-fees

North End Road, NW11



Ground Floor



First Floor

Approx Gross Internal Area **1842 Sq Ft - 171.12 Sq M**

For Illustration Purposes Only - Not To Scale

www.goldlens.co.uk

Prepared for Chestertons

Ref. No. 007949J

