



Glaisher Street, SE8
£1,100,000

Dexters



Glaiser Street, SE8

A beautifully presented three-bedroom penthouse, finished to an exceptional standard and featuring floor-to-ceiling windows and high ceilings throughout. This special apartment boasts two private roof terraces with uninterrupted panoramic views over the Thames, taking in The City, Canary Wharf, the O2, The Royal Naval College & The Cutty Sark. It further benefits from two bathrooms and a secure parking space. A viewing is highly recommended.

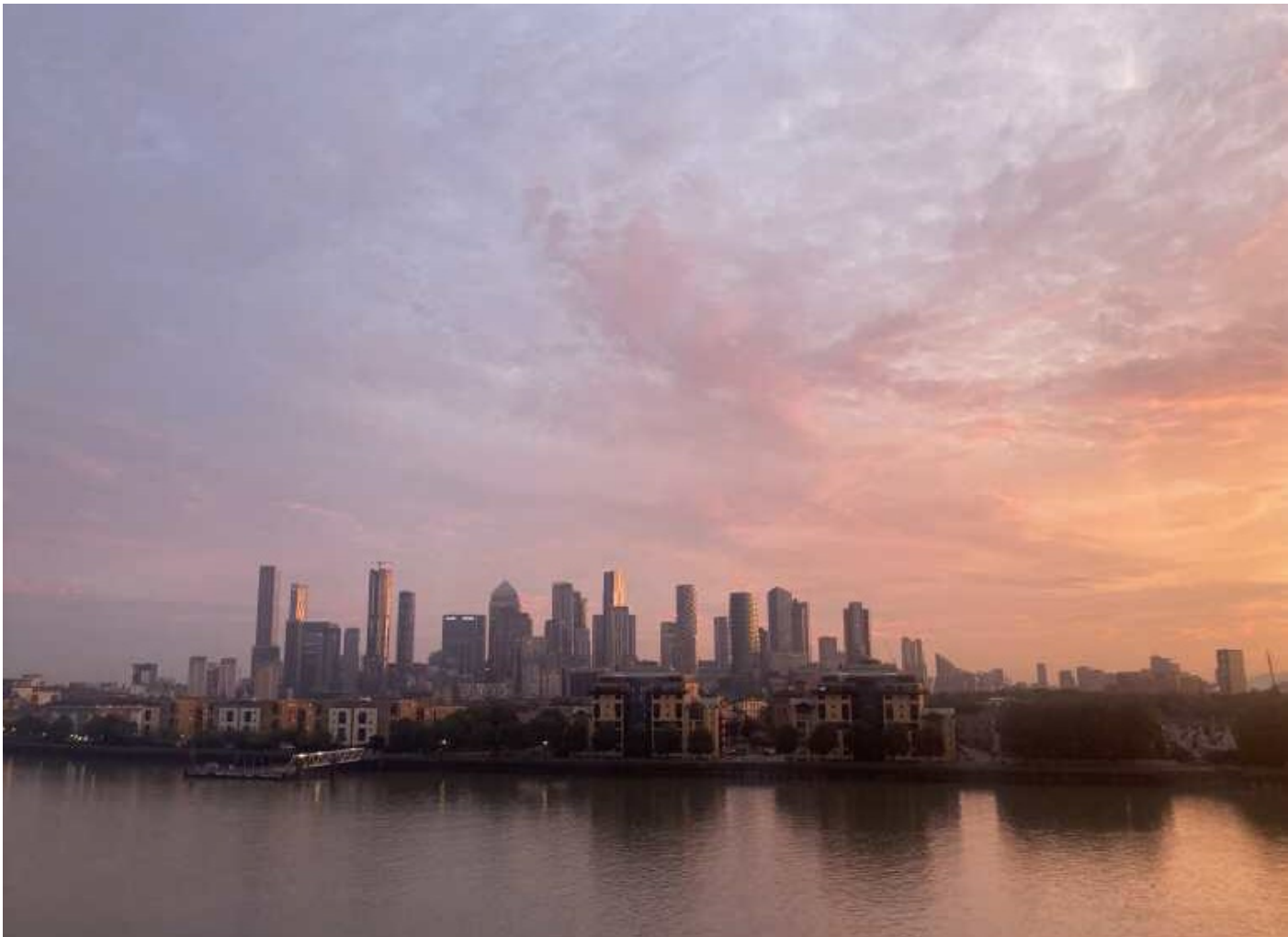
The property is ideally located for the wide open spaces and local amenities of Greenwich Park and Blackheath as well as being situated close to Cutty Sark and the Old Royal Naval College.

Features

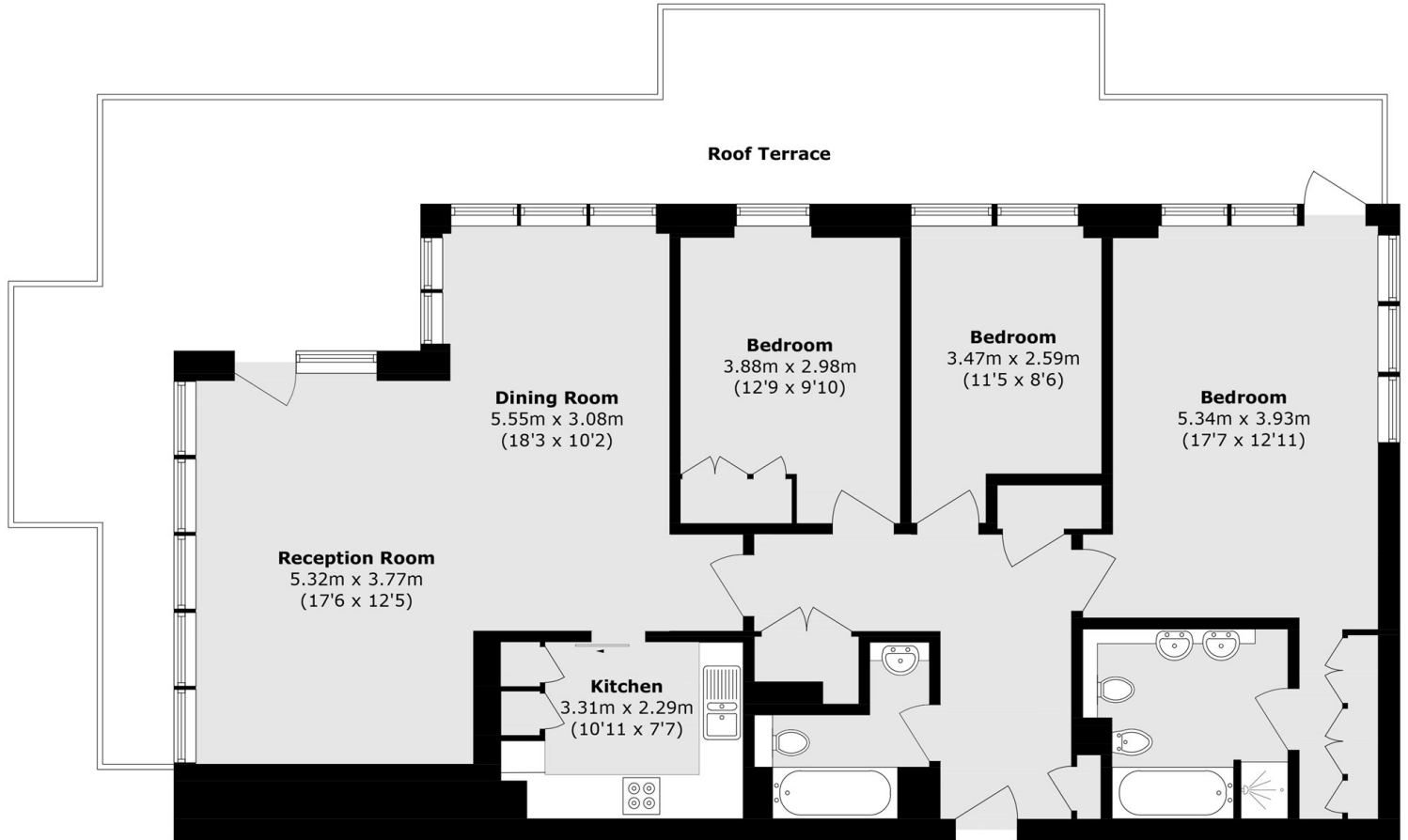
- Modern Throughout
- Three Bedrooms
- Two Bathrooms
- Sought After Location
- Secure Parking
- City/River Views







Glaisher Street,
London, SE8



Total area (approx.): 122.7 sq. m (1,320.7 sq. ft)

Roof terrace (approx.): 49.9 sq. m (537.1 sq. ft)