

Unit 6 13 Burton Place, Manchester, Lancashire, M15 4PT
Tel: 0161 637 8336
Email: contactus@ascendproperties.com
www.ascendproperties.com

Ascend

Built on higher standards



Brooklyn Lofts, Mason Street, Manchester

£1,100 PCM

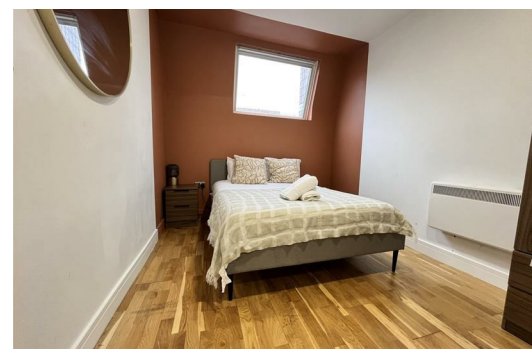
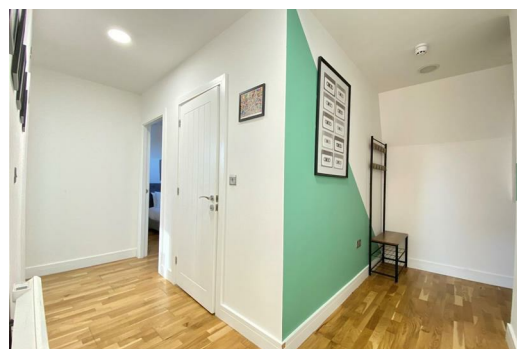
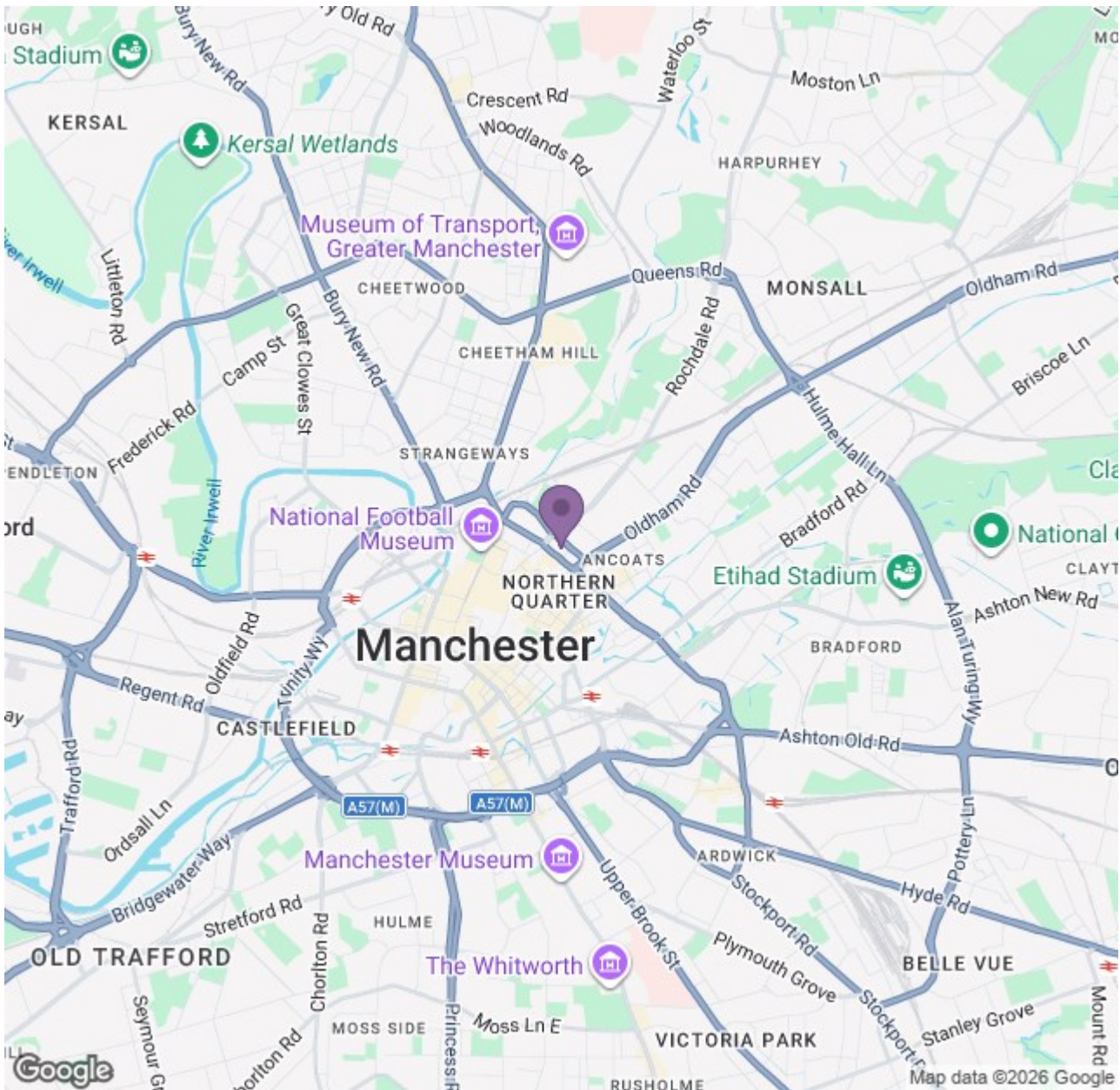
Located smack bang in the middle of Manchester city centre with the hustle and bustle of the Northern Quarter just a two minute walk away? Welcome to Brooklyn Lofts: a former heritage building that has been expertly renovated into 10 stunning loft-style apartments.

Marrying together contemporary and industrial architecture, this two bedroom penthouse apartment just oozes style and manages to bring a sense of New York loft style elegance to an M4 city centre postcode. Step inside and you'll find a beautifully finished open-plan living room and kitchen area which is the perfect place for a weekend get-together or a simple cosy night in. With its clean-lines and gorgeous fixtures, the kitchen has everything you would need to cook up a storm (or dish out a takeaway...)

The two double-bedrooms next door are equally as stylish and with a fabulous amount of natural light leaking in from the cleverly placed windows (a rarity in this area), it won't take long to get settled and truly make this your next home. Combine the super-stylish bathroom with the stunning wooden flooring throughout the property and it's really not hard to see why these apartments at Brooklyn Lofts are a winner!

Not only this, the location couldn't be more spot on. From your apartment, you'll have fantastic access to all that the city centre has to offer as well as Manchester Victoria and Piccadilly train stations, so travelling further afield would be an absolute breeze. Plus, you're also right next to the Northern Quarter; packed full of more bars, cafes, restaurants and quirky shops than you can shake a vintage stick at. What more could you ask for?





Energy Efficiency Rating				Environmental Impact (CO ₂) Rating			
Rating	Score	Band	Score	Rating	Score	Band	Score
A	92	A	92	A	92	A	92
B	81	B	81	B	81	B	81
C	69	C	69	C	69	C	69
D	55	D	55	D	55	D	55
E	41	E	41	E	41	E	41
F	29	F	29	F	29	F	29
G	13	G	13	G	13	G	13