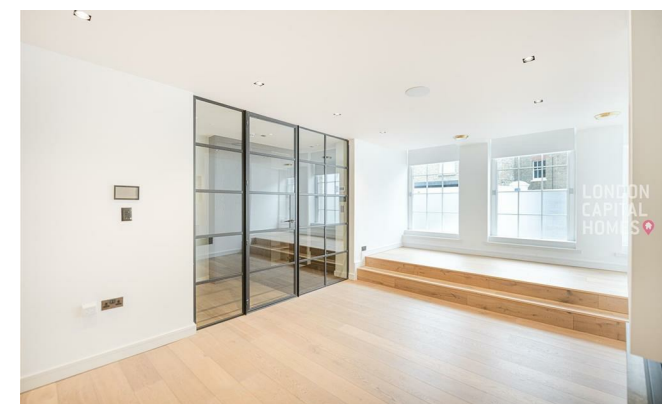


**LONDON
VICTORIA
GROUPS**



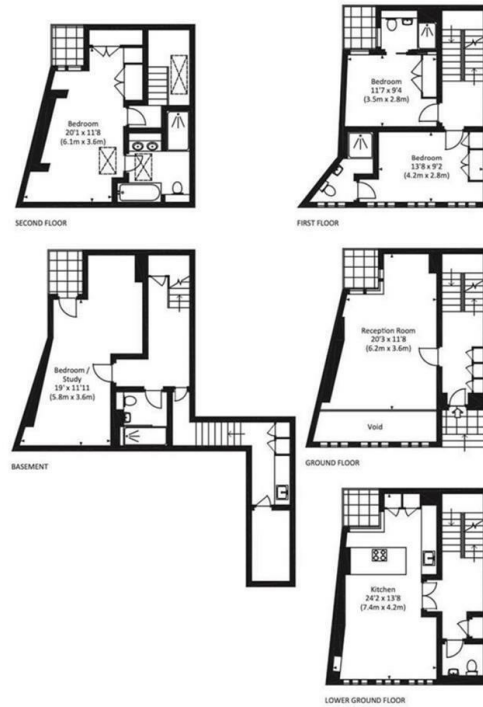
, London W1U 5PS

- Approx. 239 square metres
- Terraced House
- CTB-H
- Close to Marylebone and Regent's Park
- Amazing Location
- EPC-B

£5,600,000 Freehold

Local Authority **Westminster**
Council Tax Band **H**
EPC Rating **B**

Approx. gross internal area
2153 Sq Ft. / 200.0 Sq M.



All measurements have been made in accordance with RICS Code of Measuring Practice which are approximate only and only for illustrative purposes. For the avoidance of doubt, Drawing.com Design shall not be liable for any reliance on these measurements. © 2017 www.drawing.com 020 7650 9555

London Office Office
Spaces Victoria, 25 Wilton Road, Pimlico,
London, SW1V 1LW

Contact
020 3084 3094
XL@londonvictoriagroups.co.uk
www.londonvictoriagroups.co.uk

Agents Note: Whilst every care has been taken to prepare these particulars, they are for guidance purposes only. All measurements are approximate and for general guidance purposes only and whilst every care has been taken to ensure accuracy, they should not be relied upon and potential buyers/tenants are advised to recheck the measurements.

