



colin ellis
your trusted property experts

Hallgarth,
Pickering, YO18 7AW

Rent - £7,200 Per Annum

Situated in the Historic Market Town of Pickering, 3 Hallgarth provides versatile commercial premises suitable for retail, office, professional services, or other business uses, making it an attractive opportunity for anyone wishing to start their own business

FRONT RETAIL UNIT

4.065 x 3.741 (13'4" x 12'3")

KITCHEN

3.542 x 3.148 (11'7" x 10'3")

Kitchen includes, oven hob, worktop areas and kitchen storage cupboards

HALLWAY

HALLWAY CUPBOARD

WC

1.180m x 1.884 (3'10" x 6'2")

REAR KITCHEN

Selection of Kitchen units and sink with work top area

BUSINESS RATES

BUSINESS RATEABLE VALUE:

Current rateable value (1 April 2026 to present)
£5,900

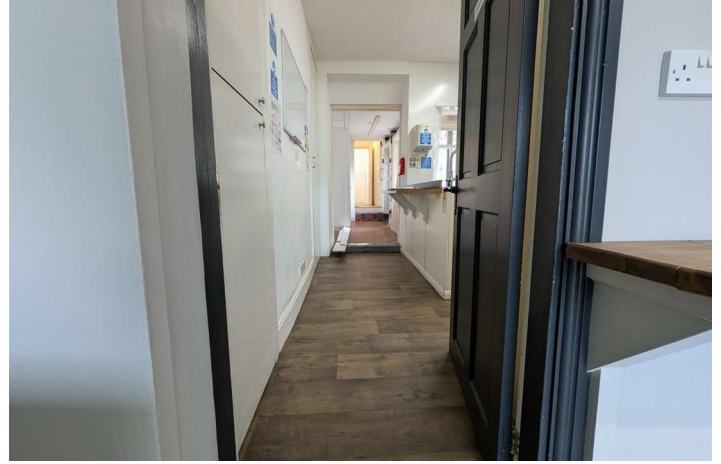
TENURE

LEASE: New lease with Landlord terms to be agreed - Internal Repairing and Insuring Lease

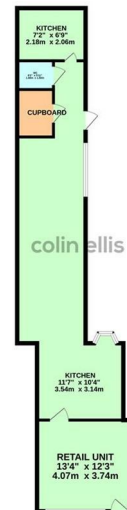
RENT: Currently £7,200 per annum -

VIEWING DETAILS

Contact Colin Ellis Property Services



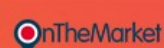
GROUND FLOOR



Hallgarth - 18820159

Length of Tenancy - Please contact office for further information

DISCLAIMER: The agent has not tested any apparatus, fittings or services and so cannot verify they are in working order. The buyer is advised to obtain verification from their own solicitor or surveyor. Occasionally a wide angle lens may be used. This property was inspected by COLIN ELLIS PROPERTY SERVICES. We always try to make our sales particulars accurate and reliable, but if there is any point which is of particular importance to you, especially if you are considering travelling some distance to view the property, please do not hesitate to contact this office, we will be pleased to check the information for you. Council Tax Band ratings have been provided by DirectGov.



Tel: 01723 363565
E-mail: info@colinellis.co.uk

RESIDENTIAL & COMMERCIAL SALES
LETTINGS CHARTERED SURVEYOR

See all our properties online
www.colinellis.co.uk