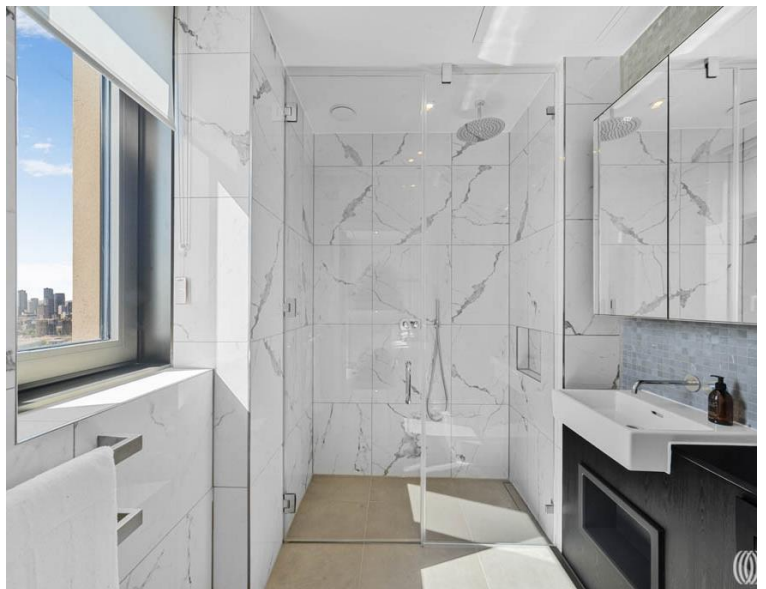
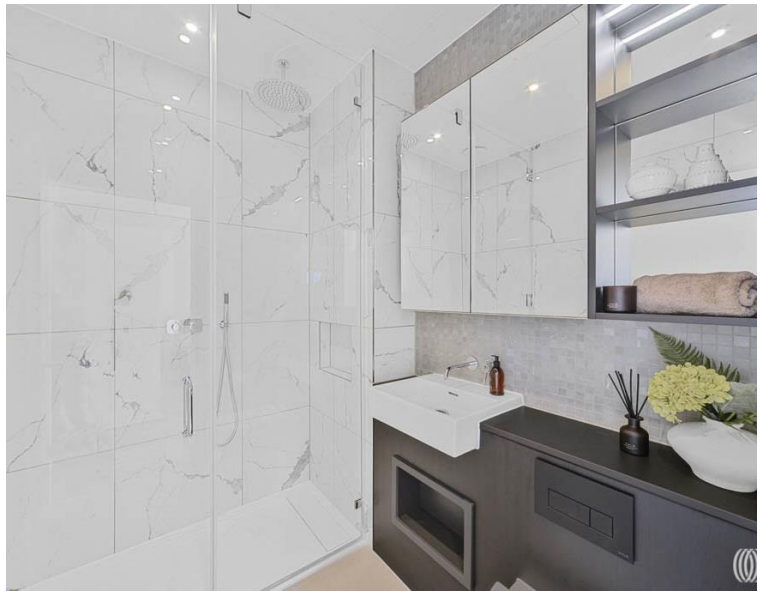


# Affinity View, London E16

£990,000 Leasehold







## Description

Positioned within the prestigious TwelveTrees Park development, this exceptional penthouse apartment represents the pinnacle of contemporary London living. The development's striking modern architecture creates a sophisticated residential environment that perfectly complements the dynamic regeneration of this coveted East London location.

Spanning just under 1,300 square feet of meticulously designed internal space, this premium specification residence showcases exceptional attention to detail throughout. The expansive living area extends over 600 square feet, creating a magnificent entertaining space anchored by a fully integrated kitchen featuring lustrous quartz worktops and premium Siemens appliances. The seamless flow from interior to exterior is masterfully achieved through direct access to a private south-facing terrace, where exceptional panoramic views of the London skyline create a breathtaking backdrop for daily life. All three bathrooms exhibit luxury finishes with elegant porcelain floors and fully tiled walls, while ample storage solutions throughout ensure effortless organisation of contemporary living.

- READY TO MOVE IN
- Private south-facing terrace
- Panoramic London skyline views
- Secure underground parking space
- 24-hour concierge service
- Residents' gym facility
- Private screening room
- Dedicated co-working space
- 12-acre landscaped grounds
- WiFi-enabled park access

# Floorplan

1,299 sq ft | 121 sq m

## MENARA POINT, TWELVETREES PARK

APPROXIMATE GROSS INTERNAL FLOOR AREA 1299 SQ.FT (120.7 SQ.M)



### THIRTY SECOND FLOOR



This floor plan has been defined by the RICS Code of Measurement. This floor plan and all others are for approximate representative purposes only and upon usage is agreed to as such by the client.  
WWW: [hdvirtualart.com](http://hdvirtualart.com) | TEL: 0203.974.1567 | EMAIL: [info@hdvirtualart.com](mailto:info@hdvirtualart.com)

Stratford  
5 Station Street,  
London E15 1DA  
+4420 3147 1500  
[Lettingsstratford@eu.jll.com](mailto:Lettingsstratford@eu.jll.com)

*Urban living, your way.*

[jll.co.uk/residential](http://jll.co.uk/residential)

© 2019 Jones Lang LaSalle IP, Inc. All rights reserved. All information contained herein is from sources deemed reliable; however, no representation or warranty is made to the accuracy thereof.

