



Price
£450,000

Freehold

3x  1x  2x 

**Green Lane, Northgate,
West Sussex, RH10**

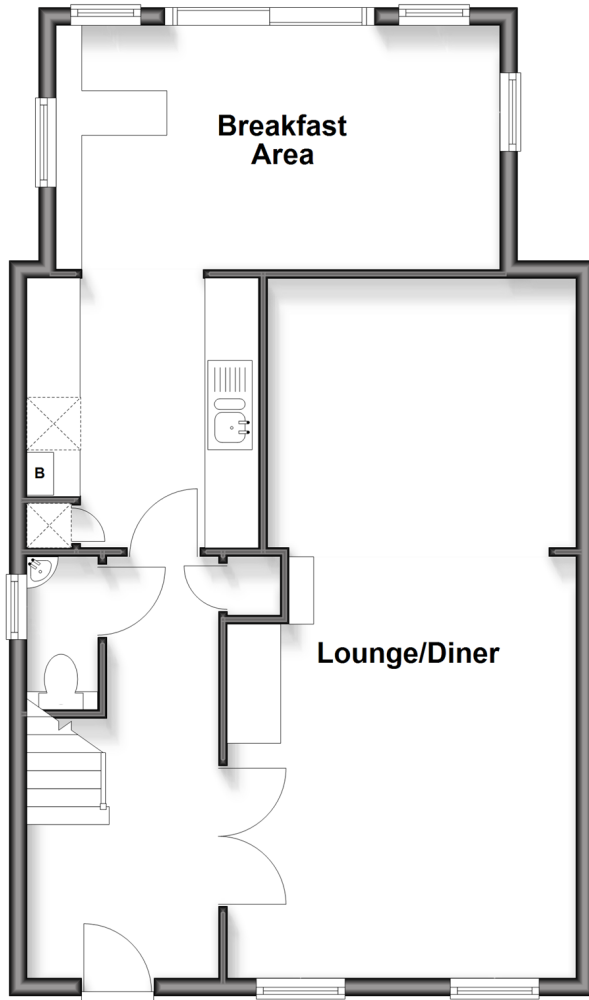
OVER 60?

Secure this property
for up to **59% less!**

cubitt & west
Helping you move forwards

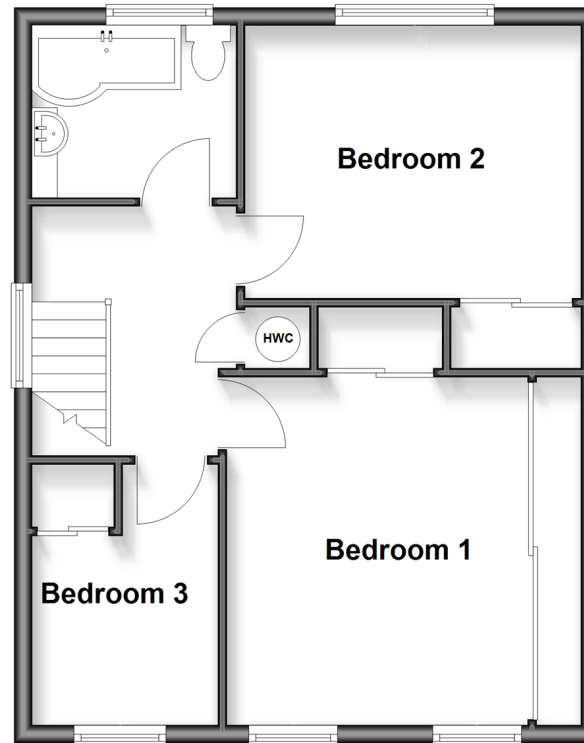
Split Level Ground Floor

Approx. 62.7 sq. metres (675.0 sq. feet)



First Floor

Approx. 48.5 sq. metres (522.6 sq. feet)



Accommodation

GROUND FLOOR

Entrance Hall

Downstairs Cloakroom

Lounge/Diner: 26'0 (7.93m) x 13'0 (3.97m)
narrowing to 11'7 (3.53m)

Kitchen : 9'11 x 8'5 (3.02m x 2.57m)

Breakfast Area : 16'5 x 9'1 (5.01m x 2.77m)

FIRST FLOOR

Landing

Bedroom 1: 13'2 (4.02m) x 13'0 (3.97m)
narrowing to 10'9 (3.28m)

Bedroom 2: 12'5 x 10'1 (3.79m x 3.08m)

Bedroom 3: 9'10 x 7'1 (3.00m x 2.16m)

Bathroom: 7'6 x 6'4 (2.29m x 1.93m)

OUTSIDE

Front Garden

Rear Garden

Two Garages

Long Driveway



Main features

- Extended and improved end of terraced house
- Large lounge/diner and separate breakfast Area
- Re-fitted bathroom suite and downstairs cloakroom
- Two garages to the rear of the property and a long driveway for several cars
- Short walk to Crawleys Town centre, local shops and schools



Nearest Schools

Primary Schools: Northgate Primary 0.4 miles, Pound Hill Junior School, Crawley 1.1 miles, Langley Green Primary 1.2 miles

Secondary Schools: Hazelwick School 0.8 miles



Transport Information

Train Stations: Three Bridges 1.4 miles, Crawley 1.6 miles, Ifield 2.7 miles



Address

Green Lane, Northgate, West Sussex, RH10



Directions

For directions to this property please contact us.



cubitt&west
Helping you move forwards

Call Crawley Branch 01293 522233 ■ cubittandwest.co.uk



- Legal advice should be taken to verify fixtures/fittings, planning, alterations and/or lease details
- Appliances & services are untested, dimensions are approximate and floor plans are not to scale
- Through a Homewise Home For Life Plan people aged 60+ can secure this property for up to 50% less, by purchasing a Lifetime Lease.



EPC RATING



20419359/20250904/SS/DC