



Our View “A property that must be seen to be appreciated”

A spacious detached three-bedroom bungalow featuring enclosed gardens, driveway, and garage, located in an elevated position within a quiet cul-de-sac in the sought-after village of Kingskerswell, enjoying delightful panoramic countryside views

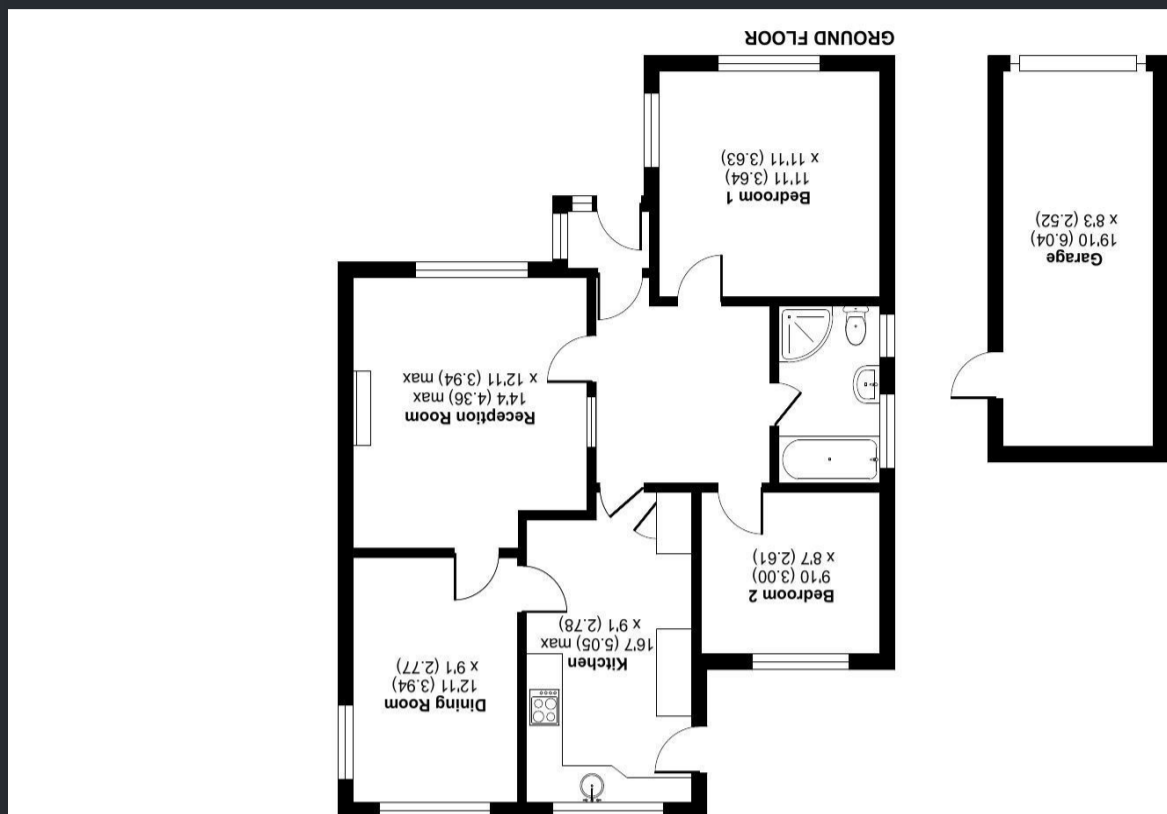
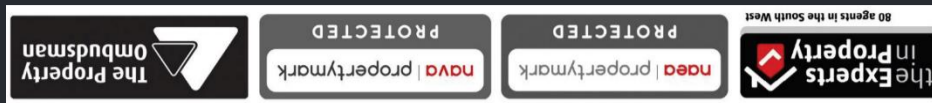
The accommodation begins with an entrance porch with tiled flooring and obscured double-glazed windows, leading into a spacious and welcoming reception hallway. This provides access to the principal rooms, including a bright and spacious living room located at the front of the property, enjoying superb panoramic views across Kings Castle and the surrounding countryside through double-glazed windows to the front and side. The living room also benefits from a gas fireplace with mantel surround. Continuing from the hallway, there is access to a fitted kitchen comprising a matching range of wall and base units, stainless steel mixer tap, built-in oven with gas hob and extractor hood and light above. There is space for appliances such as a fridge/freezer and washing machine, a double-glazed window to the rear overlooking the garden, a wall-mounted combination boiler, an obscured double-glazed

door to the side, and a useful larder cupboard. An internal door provides access to a separate dining room/bedroom four, offering flexible use, with double-glazed windows to the side and rear overlooking the garden. This room also has an internal door leading through to the living room. From the reception hallway, there are a further two double bedrooms, both with double-glazed windows to the front and rear respectively. The main bedroom is located at the front of the property and is a generous size, again enjoying superb far-reaching views. Separating the bedrooms is a bathroom suite comprising a low-level WC, pedestal wash hand basin, panelled bath, and a mains-fed shower, with obscured double-glazed window to the side. Completing the accommodation are a useful storage cupboard off the hallway and access to the loft, which is found from the kitchen. Externally, the property features enclosed and well-presented gardens. There is a driveway to the side of the property providing ample off-road parking, and a low-maintenance front garden with steps and pathway leading to the front entrance. The driveway is partly block paved and leads to a detached garage with metal up-and-over door, with power and lighting provided. Gated access from the driveway leads to the rear garden, which is very private and enclosed. Immediately outside the kitchen is a paved seating area, with steps rising to a level lawn and a further patio area.

The garden enjoys superb views of the surrounding countryside. There is also gated access from the garage, along with a door providing access from the garden.

- Spacious detached bungalow
- Living room with delightful views
- Kitchen
- Dining room / bedroom
- Two further double bedrooms
- Bathroom
- Enclosed gardens
- Driveway and garage
- Superb countryside views





Approximate Area = 874 sq ft / 81.1 sq m
Garage = 164 sq ft / 15.2 sq m
Total = 1038 sq ft / 96.3 sq m

Mount Pleasant Close, Kingskerswell, Newton Abbot, TQ12

