



Osprey Court

Star Place, E1W

£5,000 per month
(£1,153.85 per week)

Stunning 2 bedroom apartment in the prestigious Star Place development. This apartment boasts fully integrated kitchen, wooden floors, master suite with en-suite, floor to ceiling windows with an impressive balcony overlooking St Katherine's Dock.



Osprey Court

Star Place, E1W

- CONCIERGE
- TWO BEDROOM
- TWO BRAND NEW BATHROOM
- NEWLY DECORATED
- UNFURNISHED
- BALCONY



Stunning 2 bedroom apartment in the prestigious Star Place development. This apartment boasts fully integrated kitchen, wooden floors, master suite with en-suite, floor to ceiling windows with an impressive balcony overlooking St Katherine's Dock.

The apartment is located in St Katherine's dock arguably one of London's most desirable post codes; is in a gated development with concierge.

Minimum Term: 12 months
Deposit Required: £5,769.23
Local Authority: Tower Hamlets
Council Tax Band: G
EPC Rating: To be confirmed
Part Furnished, Unfurnished

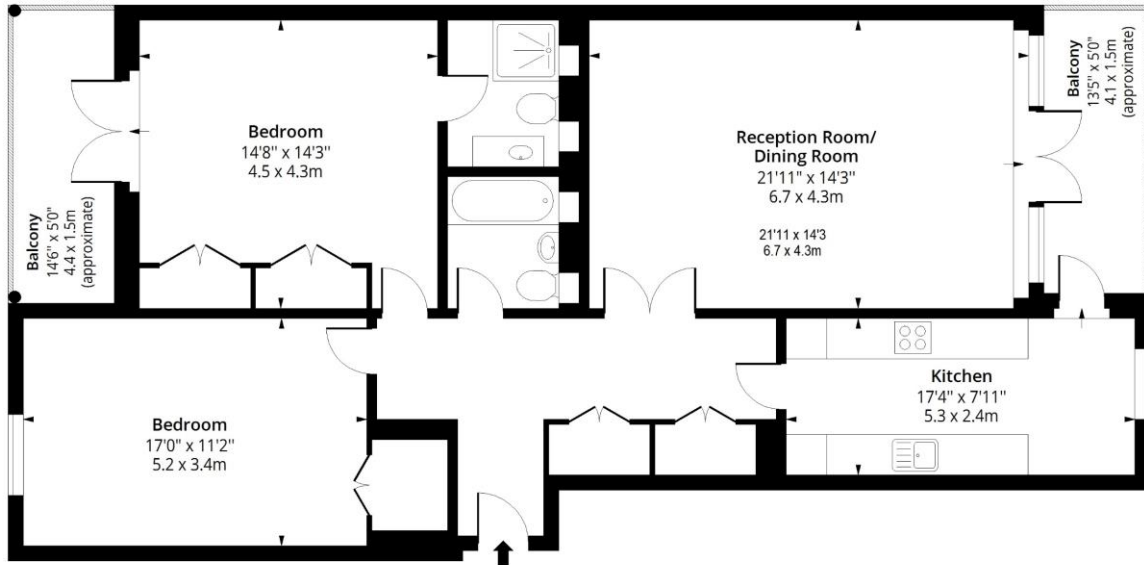
Chestertons Tower Bridge Lettings

220 Tower Bridge Road
Tower Bridge
London
SE1 2UP
lettings.towerbridge@chestertons.com
02073576911
chestertons.com

Additional tenant charges apply (fees apply to non-AST tenancies only)
Tenancy Agreement Fee: £300
References per Tenant/Guarantor: £60
Inventory check (approx. £100 – £250 inc. VAT)
[chestertons.com/property-to-rent/applicable-fees](https://www.chestertons.com/property-to-rent/applicable-fees)

Osprey Court, E1W

Approx. Gross Internal Area 1171 Sq Ft - 108.79 Sq M M
Approx. Gross Balcony Area 143 Sq Ft - 13.28 Sq M



Second Floor

Floor Area 1171 Sq Ft - 108.79 Sq M



Measured according to RICS IPMS2. Floor plan is for illustrative purposes only and is not to scale. Every attempt has been made to ensure the accuracy of the floor plan shown, however all measurements, fixtures, fittings and data shown are an approximate interpretation for illustrative purposes only. 1 sq m = 10.76 sq feet.

lpaplus.com

Date: 6/2/2023

