

# CHARLES ORLEBAR

Estate Agents & Auctioneers



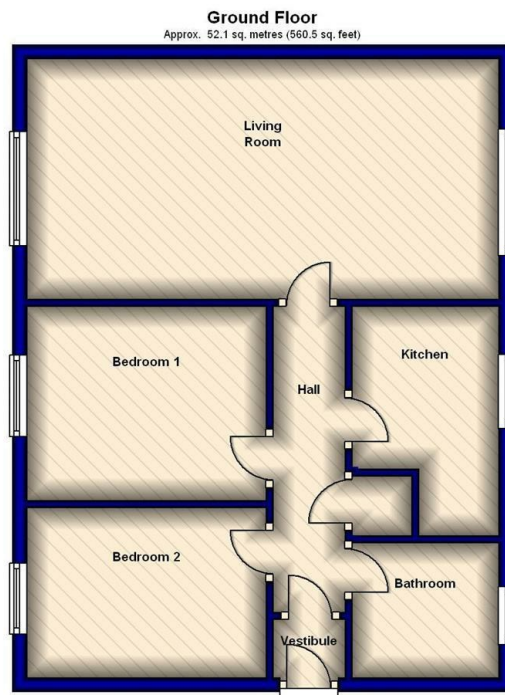
## Flat 1 Gatcombe House Portland Road, Rushden, Northamptonshire, NN10 0DF

Charles Orlebar presents a ground floor flat providing 2 bedrooms and available now unfurnished with a lockable GARAGE immediately below the property - Available in June 26

- 2 bedrooms
- Bathroom
- Kitchen
- Living room
- Garage
- Electric heating
- Un-furnished

£780 PCM Deposit £900

Council Area: North Northants - Council Tax Band: A  
 Furnishing: Unfurnished  
 Holding Deposit required: One Week's Rent Value



Total area: approx. 52.1 sq. metres (560.5 sq. feet)

LOCATION, SITE AND FLOOR PLANS AND ANY PHOTOGRAPHS Are provided for initial visual guidance only and are not to scale and may omit features that would affect your decision. Please ring and discuss any queries you may have.

MEASUREMENTS The measurements in these details are given as a guide only and should not be relied upon beyond their means as a general rule of thumb.

SERVICES Any proposed tenant must establish before tenancy that TV aerials, satellite dishes, and telephone points work. All tenants are to assume that these services are disconnected and to be reconnected at the tenant's cost.

PARTICULARS Charles Orlebar Estate Agents Ltd, for themselves and for the landlords, give notice that the particulars are set out as a general outline only for the guidance of intended purchasers and do not constitute, nor constitute part of an offer or contract.

TELEVISION, PHONE, AND BROADBAND SERVICES are untested and are not provided by the landlord

**CHARLES ORLEBAR ESTATE AGENTS** - 9-11 High Street, Rushden, Northamptonshire, NN10 9JR  
 Tel: 01933 311121 Email: [lettings@charlesorlebar.co.uk](mailto:lettings@charlesorlebar.co.uk) <https://charlesorlebar.co.uk/>

Energy Efficiency Rating		
	Current	Potential
Very energy efficient - lower running costs		
(92 plus) <b>A</b>		
(81-91) <b>B</b>		
(69-80) <b>C</b>		
(55-68) <b>D</b>		
(39-54) <b>E</b>		
(21-38) <b>F</b>		
(1-20) <b>G</b>		
Not energy efficient - higher running costs		
	53	74
<b>England &amp; Wales</b>	EU Directive 2002/91/EC	

Environmental Impact (CO <sub>2</sub> ) Rating		
	Current	Potential
Very environmentally friendly - lower CO <sub>2</sub> emissions		
(92 plus) <b>A</b>		
(81-91) <b>B</b>		
(69-80) <b>C</b>		
(55-68) <b>D</b>		
(39-54) <b>E</b>		
(21-38) <b>F</b>		
(1-20) <b>G</b>		
Not environmentally friendly - higher CO <sub>2</sub> emissions		
<b>England &amp; Wales</b>	EU Directive 2002/91/EC	