

The Valetta

2 bedroom bungalow

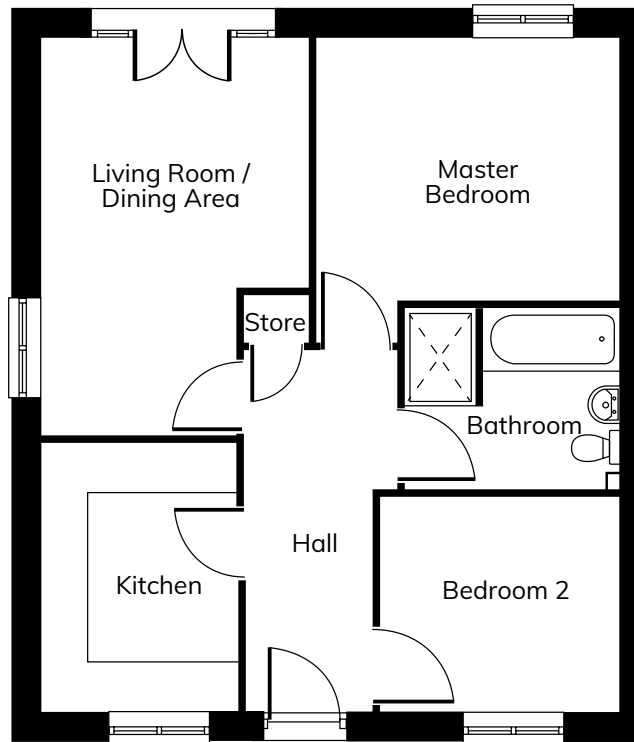


karbon
homes

The Valetta

2 bedroom bungalow

This delightful bungalow has a spacious entrance hall leading to all rooms. A modern fitted kitchen is located at the front of the property and there is an open plan living room with dining area and French doors leading to the rear garden. The master bedroom also provided views over the garden, with a second bedroom and a shared bathroom completing the accommodation.



Ground Floor

Living/Dining Area	4.93m x 3.32m	16'2" x 10'10"
Kitchen	1.59m x 4.49m	5'2" x 14'8"
Master Bedroom	3.77m x 3.26m	12'4" x 10'8"
Bedroom 2	2.65m x 2.98m	8'8" x 9'9"
Bathroom	2.69m x 2.24m	8'10" x 7'4"