



SAMUEL WOOD



Windmill Cottage Guesthouse Weston Under Redcastle

Shrewsbury, Shropshire, SY4 5UX

£750 Per Month



MANAGED BY SAMUEL WOOD. Modernised one bedroom self contained annexe with courtyard garden and nearby parking nestled in the picturesque village of Weston Under Redcastle.



CONTEMPORARY AGENCY • TRADITIONAL VALUES

propertymark

MAYFAIR
OFFICE.CO.UK

rightmove

onTheMarket.com



An opportunity to rent a 1 bedroom self contained annexe in the popular village of Weston Under Redcastle. The property is set in pleasant surroundings and away from the main road. Viewing is highly recommended.

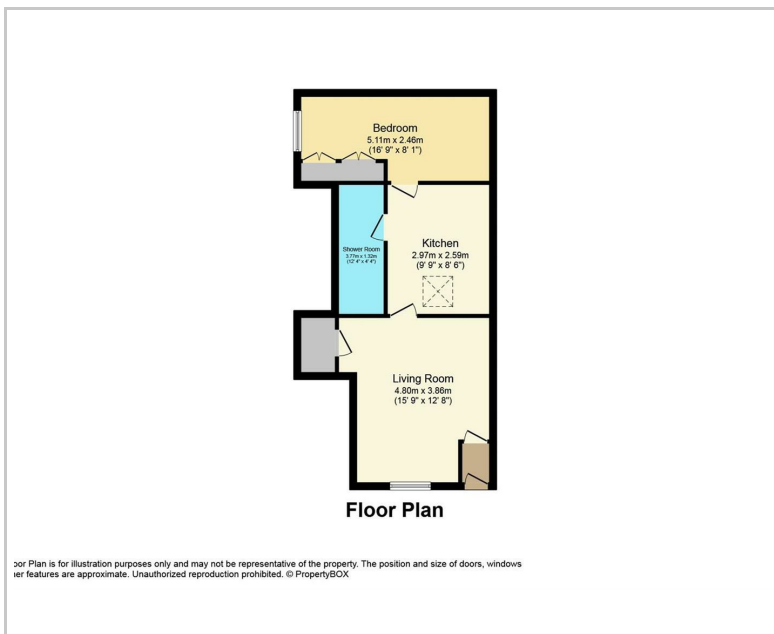
The property comprises entrance hall, living room with electric fire, kitchen with breakfast bar, double bedroom with built in wardrobes and modern shower room. The kitchen comes with built in oven and hob and there is a space for an upright fridge freezer and plumbing for washing machine.

Outside the property enjoys a small courtyard and nearby unallocated parking. The property faces onto Hawkstone Golf Course, with the local attraction of Hawkstone Park Follies around the corner.

PLEASE NOTE. there is no telephone line connected to the property. The tenant would have to make their own arrangements for broadband internet. One of the options would be a mobile provider. We would strongly recommend to check coverage for any such provider using Ofcom website, which gives you indicative strength of signal for any provider, both indoors and outdoors.

Wem (approx 5 miles) and Hodnet (approx 4 miles) provide access to local amenities, with the market towns of Whitchurch, Market Drayton, Shrewsbury and Ellesmere all within approx 16 miles.

Area Map



We take every care in preparing our sales details. They are checked and usually verified by the Vendor. We do not guarantee appliances, alarms, electrical fittings, plumbing, showers etc. You must satisfy yourself that they operate correctly. Room sizes are approximate; they are usually taken in metric and converted to imperial. Do not use them to buy carpets or furniture. We cannot verify the tenure, as we do not have access to the legal title; we cannot guarantee boundaries or rights of way so you must take the advice of your legal representative. No person in the employment of or representing Samuel Wood has any authority to make any representation or warranty whatever in relation to this property. If there is any point which is of particular importance to you, please contact the office and we will be pleased to check the information. Do so particularly if contemplating travelling some distance to view. Applicants are advised that the majority of our shots are taken with a wide angle lens.

2 Shoplatch, Shrewsbury, Shropshire, SY1 1HF
Tel: 01743 272710 | shrewsbury@samuelwood.co.uk

www.samuelwood.co.uk