



Eld Cottage, High Cogges



Eld Cottage

Brought to market with no onward chain is an excellent opportunity to purchase this charming Grade II listed, thatched three-bedroom cottage, set within the picturesque village of High Cogges.

Council Tax band: G

Tenure: Freehold

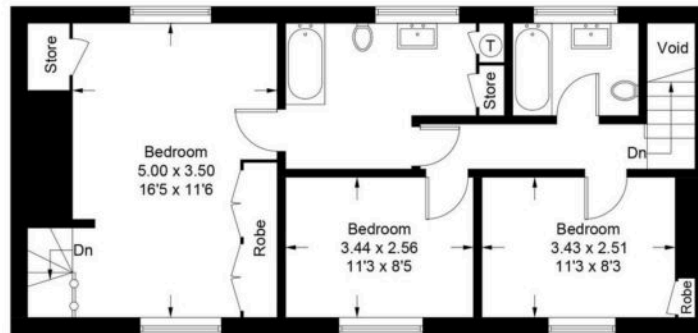
- Brought to market with no onward chain.
- A wonderful opportunity to purchase this Grade II listed thatched three-bedroom detached cottage located in the picturesque village of High Cogges.
- Requiring renovation throughout.
- Large plot with potential to extend (STPP).
- Four reception rooms to the ground floor, sitting room and dining room both with feature fireplaces.
- Three double bedrooms to the first floor.
- South-westerly facing rear garden.



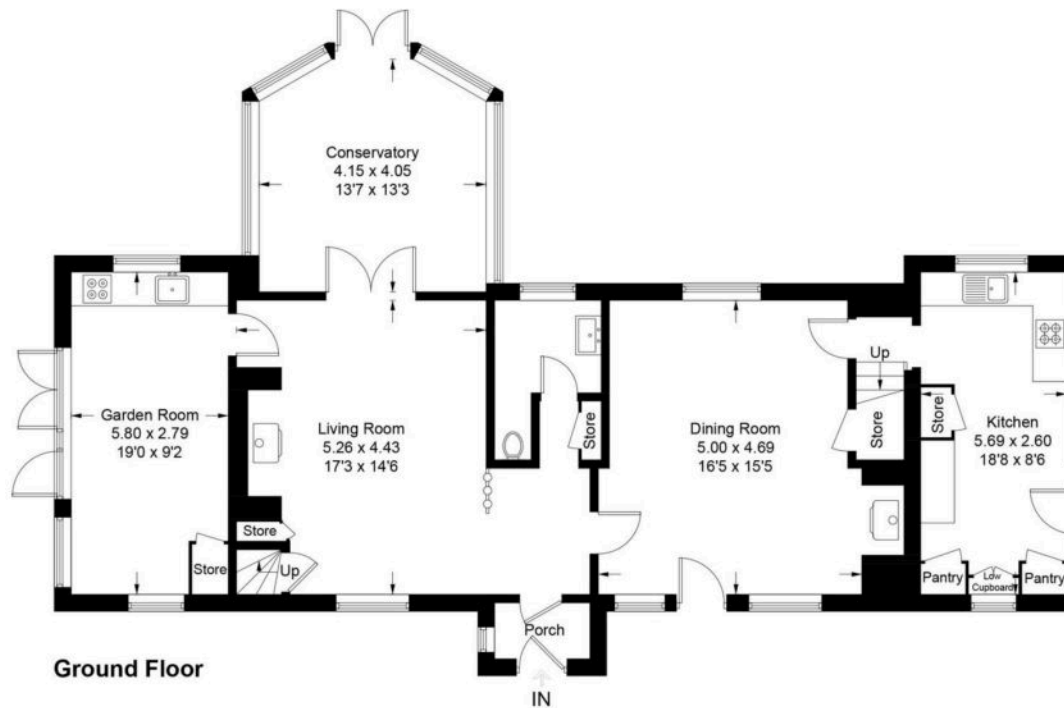


High Cogges - Witney

Approximate Gross Internal Area = 176.7 sq m / 1901 sq ft
(Excluding Void)



First Floor



Ground Floor



Simpsons Witney Branch

4 Langdale Court Witney, Oxfordshire - OX28 6AD

01993 835030 • witney@simpsonsproperty.com • www.simpsonsproperty.com/