







18 The Stables

Tabley House, Chester Road, Knutsford

An elegant Grade II listed Georgian townhouse in Tabley House parkland. Two bedrooms, en-suite, garage, private garden, access to 25 acres of communal grounds. Close to Knutsford and transport links.

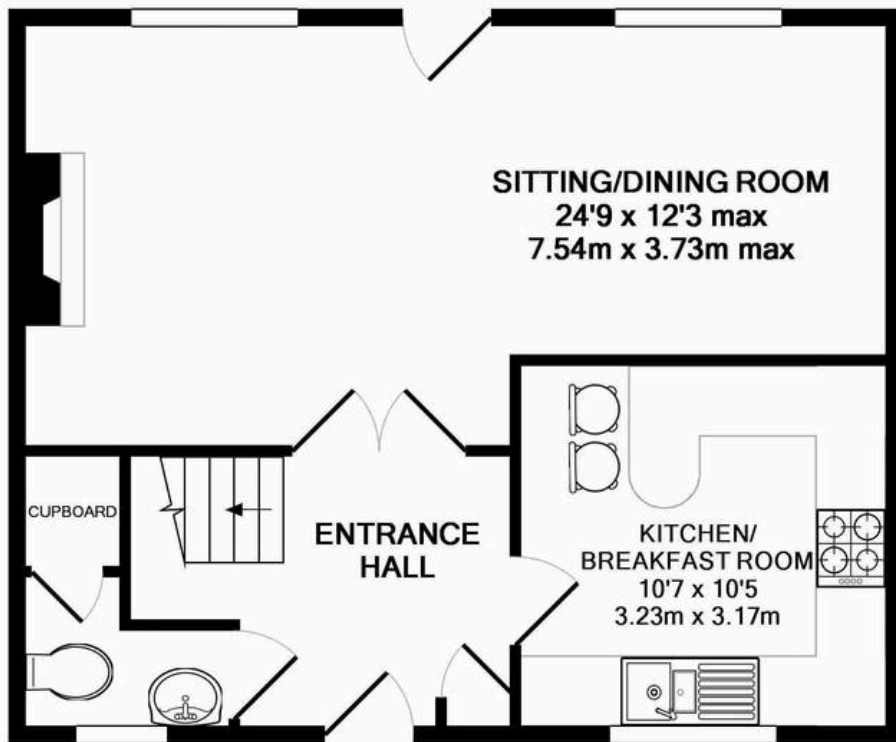
Council Tax band: E

Tenure: Leasehold

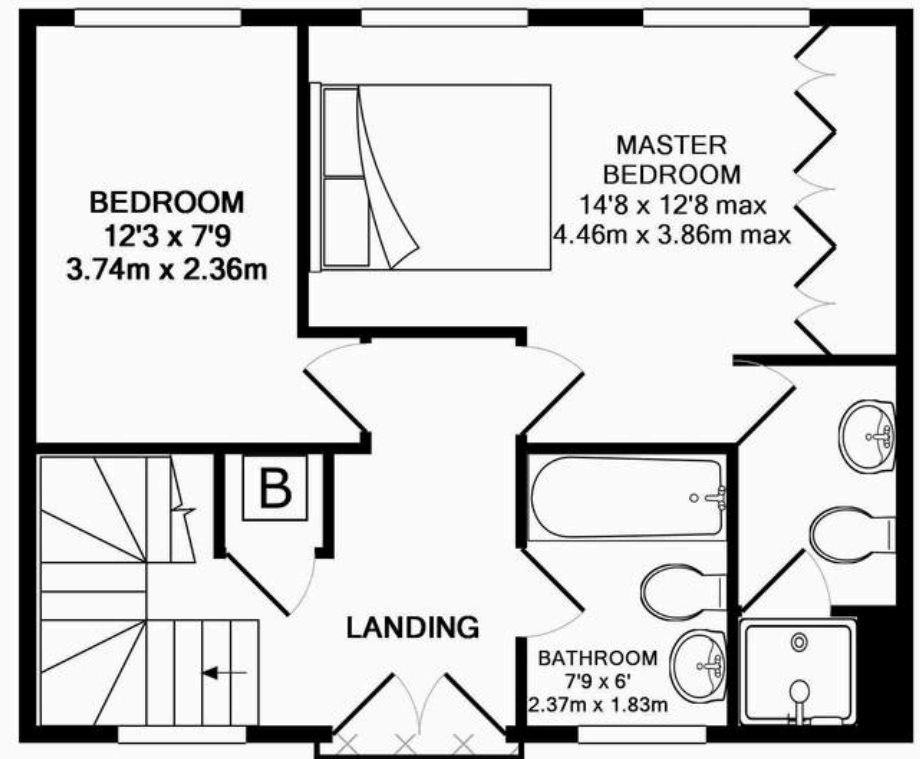
EPC Energy Efficiency Rating: C

- Grade II listed Georgian townhouse within a prestigious courtyard conversion
- Set in approximately 25 acres of communal parkland, woodland, and lakes
- Just minutes from Knutsford and excellent access to the motorway network
- Stunning high ceilings and beautifully proportioned accommodation
- Large lounge/diner opening onto private garden and communal grounds
- Garage plus additional on-site parking
- No onward chain





GROUND FLOOR
APPROX. FLOOR
AREA 501 SQ.FT.
(46.6 SQ.M.)



1ST FLOOR
APPROX. FLOOR
AREA 497 SQ.FT.
(46.2 SQ.M.)

TOTAL APPROX. FLOOR AREA 999 SQ.FT. (92.8 SQ.M.)

Whilst every attempt has been made to ensure the accuracy of the floor plan contained here, measurements of doors, windows, rooms and any other items are approximate and no responsibility is taken for any error, omission, or mis-statement. This plan is for illustrative purposes only and should be used as such by any prospective purchaser. The services, systems and appliances shown have not been tested and no guarantee as to their operability or efficiency can be given

Made with Metropix ©2015





Stuart Rushton & Company

Stuart Rushton & Co, 35 King Street – WA16 6DW

01565 757000

enquiries@srushton.co.uk

www.srushton.co.uk



We are not authorised to make or give any representations or warranties in relation to the property either here or elsewhere. We assume no responsibility for any statement that may be made in these particulars, and they do not form part of any offer or contract and must not be relied upon as statements or representation of fact. Any areas, measurements or distances are approximate. The text, photographs and plans are for guidance only. Importantly, it should not be assumed that the property has all necessary planning, building regulations or other consents and we have not tested any services, equipment or facilities. Purchasers must satisfy themselves by inspection or otherwise.