



Connells

Alma Avenue
Tipton



Property Description

Connells Estate Agents are delighted to present this stunning three-bedroom home, beautifully refurbished throughout and situated on a highly sought-after cul-de-sac in Tipton. Offered with no upward chain, this property is ready for its next owners to move straight in and enjoy.

The ground floor accommodation briefly comprises a spacious and inviting lounge featuring a charming bay window, alongside a separate dining room with direct access to the rear garden. The dining area flows seamlessly into the newly fitted contemporary kitchen, complete with stylish modern units offering ample storage, attractive tiled splashbacks, an integrated electric oven with hob, and space for a washing machine. A convenient ground floor WC completes the accommodation.

Upstairs, the property offers three well-proportioned bedrooms, all newly decorated and fitted with brand-new carpets, together with a sleek and modern shower room featuring a walk-in shower cubicle.

Externally, the property benefits from off-road parking to the front and a beautifully landscaped rear garden with side access, ideal for relaxing or entertaining.

Early viewing is highly recommended to fully appreciate the quality and finish of this exceptional home.

Ground Floor

Entrance Hallway

Irregular Shaped Room x (x)
Accessed through a storm porch. Having a double glazed front entrance door, laminate flooring, ceiling spotlights, stairs to the first floor and doors leading to the under stairs storage cupboard, WC, lounge and dining room.

Lounge

11' 2" max x 10' 10" (3.40m max x 3.30m)

Having a double glazed bay window to the front aspect, carpeted flooring, ceiling spotlights, radiator and doors leading to the dining room.

Dining Room

11' 2" x 10' 6" (3.40m x 3.20m)

Being open plan to the kitchen. Having a double glazed door leading to the rear garden, laminate flooring, ceiling spotlights and a radiator.

Kitchen

6' 7" x 6' 7" (2.01m x 2.01m)

Being a fully fitted kitchen with a range of wall, base and drawer units with laminate worktops over. Having tiled splash backs, laminate flooring, ceiling spotlights, electric oven with gas hob and cooker hood over, a sink with drainer and plumbing for a washing machine.

Wc

Having a double glazed window to the side aspect, laminate flooring, ceiling light point, WC and wash hand basin with vanity,

First Floor

Landing

Having a double glazed window to the side aspect and doors leading to the bedrooms and bathroom.

Bedroom One

13' 9" Max x 11' (4.19m Max x 3.35m)

Having a double glazed window to the front aspect, carpeted flooring, ceiling light point and a radiator.

Bedroom Two

11' x 10' 6" (3.35m x 3.20m)

Having a double glazed window to the rear aspect, carpeted flooring, ceiling light point and a radiator.

Bedroom Three

7' x 61' (2.13m x 18.59m)

Having a double glazed window to the front aspect, carpeted flooring, ceiling light point and a radiator.

Bathroom

Having a double glazed window to the rear aspect. fully tiled walls, vinyl flooring, shower cubicle, towel radiator, ceiling spotlights and a WC.

Outside

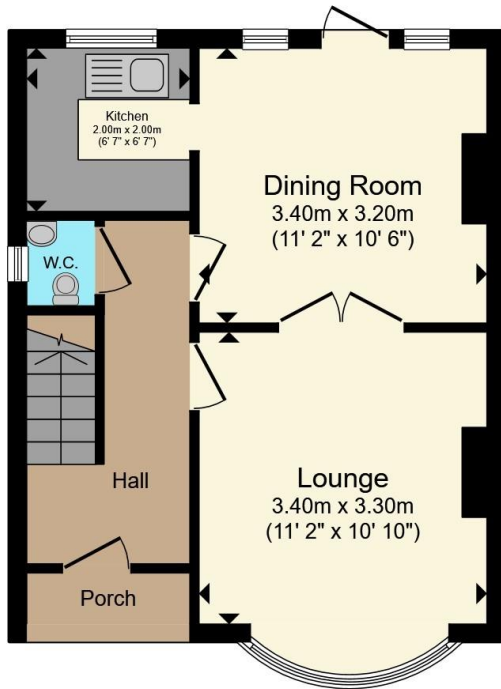
Front:

Having a brick paved driveway providing off road parking.

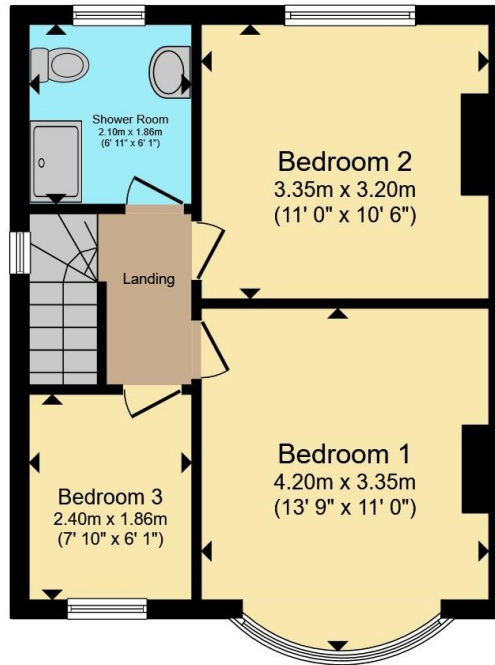
Rear:

Having a block paved patio, lawn and side access to the front of the property.





Ground Floor



First Floor



Total floor area 73.8 m² (794 sq.ft.) approx

This floor plan is for illustrative purposes only. It is not drawn to scale. Any measurements, floor areas (including any total floor area), openings and orientation are approximate. No details are guaranteed, they cannot be relied upon for any purpose and they do not form part of any agreement. No liability is taken for any error, omission or misstatement. A party must rely upon its own inspection(s). Powered by www.propertybox.io



To view this property please contact Connells on

T 0121 556 2338
E wednesbury@connells.co.uk

22 Spring Head
WEDNESBURY WS10 9AD

EPC Rating: D Council Tax
Band: A

view this property online connells.co.uk/Property/WED312358

Tenure: Freehold



1. MONEY LAUNDERING REGULATIONS Intending purchasers will be asked to produce identification documentation at a later stage and we would ask for your co-operation in order that there will be no delay in agreeing the sale. 2. These particulars do not constitute part or all of an offer or contract. 3. The measurements indicated are supplied for guidance only and as such must be considered incorrect. Potential buyers are advised to recheck measurements before committing to any expense. 4. We have not tested any apparatus, equipment, fixtures, fittings or services and it is in the buyers interest to check the working condition of any appliances.

Connells Residential is registered in England and Wales under company number 1489613, Registered Office is Cumbria House, 16-20 Hockliffe Street, Leighton Buzzard, Bedfordshire, LU7 1GN. VAT Registration Number is 500 2481 05.

See all our properties at www.connells.co.uk | www.rightmove.co.uk | www.zoopla.co.uk

Property Ref: WED312358 - 0006