



Apple Tree Grove, SW16

£800,000

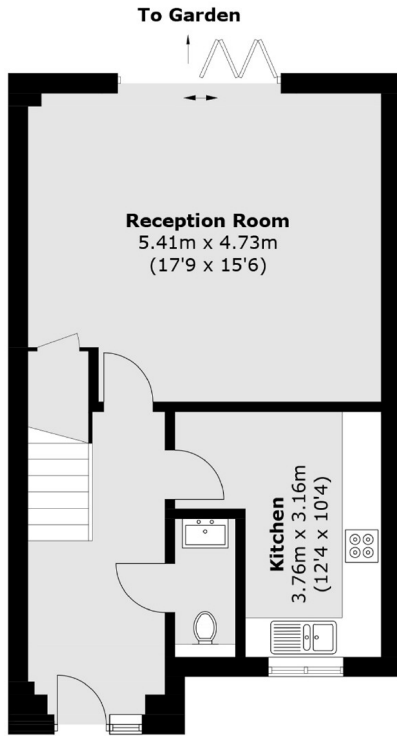
* Featured Property - Last House Remaining * A detached, four bedroom, two bathroom freehold family home in a quiet, private, gated cul-de-sac. There is a large garden to the rear, and two allocated parking spaces for the home.

Apple Tree Grove provides excellent connectivity to central London while retaining the appeal of suburban living. Norbury is well-regarded for its vibrant mix of shops, restaurants, and leisure amenities, alongside highly regarded schools and abundant parks, riversides and golf courses.

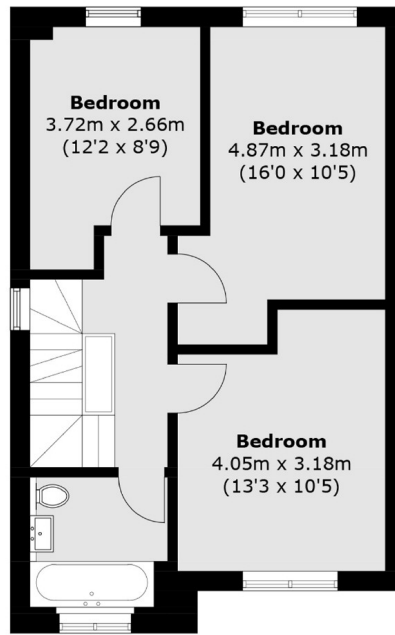
Features

- Detached Freehold House
- Four Bedrooms
- Two Bathrooms
- Private Gated Road
- Large Private Garden
- Two Allocated Parking Spaces
- GF - Under-Floor Heating
- Bosch Appliances

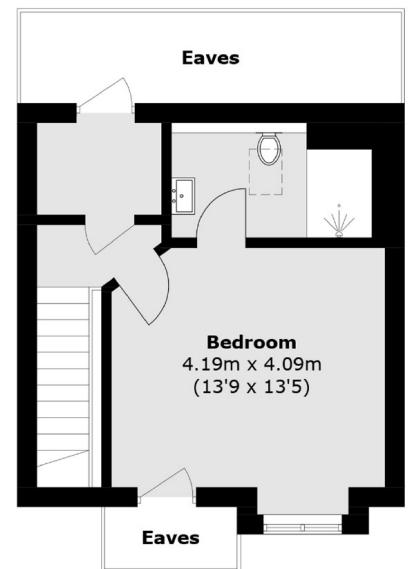
Apple Tree Grove, Streatham, SW16



Ground Floor



First Floor



Second Floor

Total area (approx.): 126.3 sq. m (1,359.5 sq. ft)
(Excluding Eaves)