



## Flowers Close, NW2

£400,000

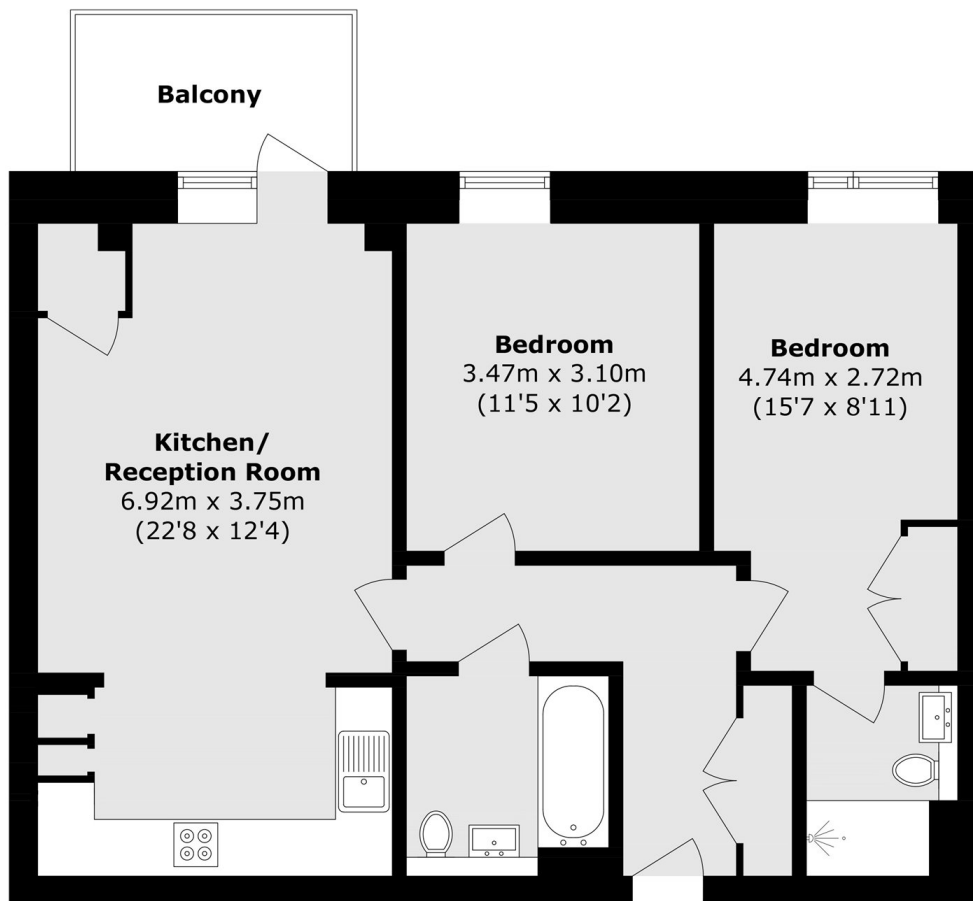
This contemporary two bedroom, two bathroom apartment extends to over 743 sq ft and features a bright, open-plan kitchen and reception area with direct access to a private balcony. The property offers two generously sized double bedrooms, a modern family bathroom, an ensuite shower room with a walk-in shower, and a spacious storage cupboard located in the hallway.

Code Court is a modern and peaceful development located on Flowers Close. Residents benefit from easy access to the 86 acres of open green space at Gladstone Park, while a wide range of cafés, restaurants, and shopping facilities can be found in Brent Cross and Neasden. Excellent transport connections are available from Brent Cross West and Neasden Station, providing convenient access to Central London and London's airports.

### Features

- Two Bedrooms
- Two Bathrooms
- Modern Development
- Private Balcony
- Open Plan

# Flowers Close, London, NW2



Total area (approx.): 68.2 sq. m (734.1 sq. ft)  
Balcony area (approx.): 5.2 sq. m (56.0 sq. ft)