



Connells

Wilton Street
Plymouth



Property Description

Welcoming to the market is the opportunity to acquire this 9 bedroom HMO arranged over three floors, situated in a prime central location and benefiting from 9 double bedrooms, 3 kitchens, 3 bathrooms, large rear garden and on-street parking.

Located in the prime location of Stoke, close to a host of local amenities such as shops and restaurants, well-regarded schools, local parks whilst offering easy access to the city centre, Plymouth university and major transport links.

This registered HMO offers nine spacious double bedrooms throughout, a kitchen and bathroom to each floor.

CONTACT AGENT FOR FURTHER DETAILS.

Lower Ground Floor

Kitchen

11' 3" x 8' 7" (3.43m x 2.62m)

Bedroom Three

14' 4" maximum x 13' 6" maximum (4.37m maximum x 4.11m maximum)

Bedroom Four

14' 4" maximum x 13' 6" maximum (4.37m maximum x 4.11m maximum)

Bedroom Nine

14' 10" x 11' 9" (4.52m x 3.58m)

Shower Room

Ground Floor

Bedroom Five

14' maximum x 12' 8" maximum (4.27m maximum x 3.86m maximum)

Bedroom Six

14' 4" maximum x 13' 6" maximum (4.37m maximum x 4.11m maximum)

Bedroom Eight

14' 11" maximum x 11' 9" maximum (4.55m maximum x 3.58m maximum)

Kitchen

12' 6" maximum x 7' 10" maximum (3.81m maximum x 2.39m maximum)

Shower Room

First Floor

Kitchen

11' 8" maximum x 7' 11" maximum (3.56m maximum x 2.41m maximum)

Bedroom One

14' 11" maximum x 14' 7" maximum (4.55m maximum x 4.45m maximum)

Bedroom Two

14' 7" maximum x 14' 5" maximum (4.45m maximum x 4.39m maximum)

Bedroom Seven

14' 11" maximum x 11' 9" maximum (4.55m maximum x 3.58m maximum)

Shower Room

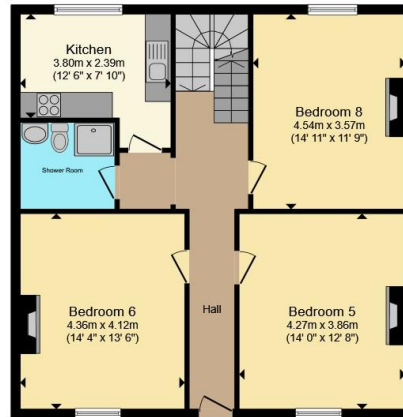




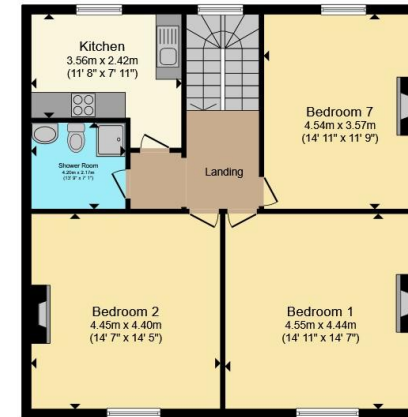




Lower Ground Floor



Ground Floor



First Floor

Total floor area 246.5 m² (2,653 sq.ft.) approx

This floor plan is for illustrative purposes only. It is not drawn to scale. Any measurements, floor areas (including any total floor area), openings and orientation are approximate. No details are guaranteed, they cannot be relied upon for any purpose and they do not form part of any agreement. No liability is taken for any error, omission or misstatement. A party must rely upon its own inspection(s). Powered by www.propertybox.io



To view this property please contact Connells on

T 01752 674 467
E plymouth@connells.co.uk

32 Mannamead Road
 PLYMOUTH PL4 7AA

EPC Rating: C Council Tax
 Band: C

Tenure: Freehold

view this property online connells.co.uk/Property/PLH313605



1. MONEY LAUNDERING REGULATIONS Intending purchasers will be asked to produce identification documentation at a later stage and we would ask for your co-operation in order that there will be no delay in agreeing the sale. 2. These particulars do not constitute part or all of an offer or contract. 3. The measurements indicated are supplied for guidance only and as such must be considered incorrect. Potential buyers are advised to recheck measurements before committing to any expense. 4. We have not tested any apparatus, equipment, fixtures, fittings or services and it is in the buyers interest to check the working condition of any appliances.

Connells Residential is registered in England and Wales under company number 1489613, Registered Office is Cumbria House, 16-20 Hockliffe Street, Leighton Buzzard, Bedfordshire, LU7 1GN. VAT Registration Number is 500 2481 05.

See all our properties at www.connells.co.uk | www.rightmove.co.uk | www.zoopla.co.uk

Property Ref: PLH313605 - 0003