



Connells

Wesley Close  
Horley



Wesley Close  
Horley RH6 8JB

for sale  
£675,000



### Property Description

The ground floor welcomes you with a spacious sitting room and an expansive 24ft dining/family room, perfect for entertaining or everyday living. The modern kitchen provides ample storage and preparation space, while a downstairs WC and internal access to the integral garage add convenience.

Upstairs boasts five double bedrooms, three of which benefit from built-in wardrobes. The master bedroom features its own en-suite, and a well-presented family bathroom serves the remaining rooms.

Outside, the property offers driveway parking for multiple vehicles at the front. The secluded rear garden is ideal for relaxation, complete with a recently updated patio, a lawned area, and a garden shed for additional storage.









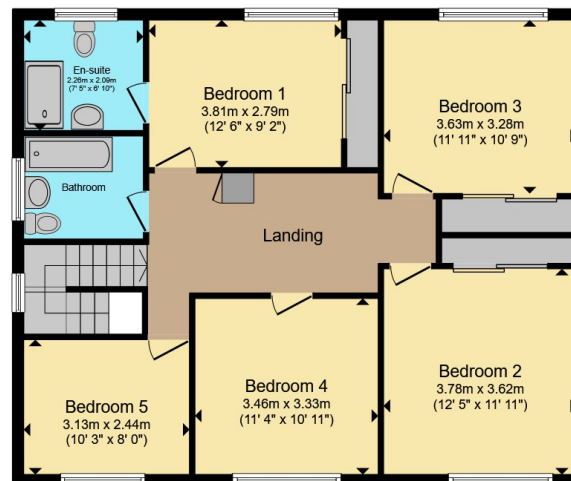








**Ground Floor**



**First Floor**

Total floor area 182.2 m<sup>2</sup> (1,961 sq.ft.) approx

This floor plan is for illustrative purposes only. It is not drawn to scale. Any measurements, floor areas (including any total floor area), openings and orientation are approximate. No details are guaranteed, they cannot be relied upon for any purpose and they do not form part of any agreement. No liability is taken for any error, omission or misstatement. A party must rely upon its own inspection(s). Powered by [www.propertybox.io](http://www.propertybox.io)



To view this property please contact Connells on

**T 01293 785 346**  
**E [horley@connells.co.uk](mailto:horley@connells.co.uk)**

30 High Street  
HORLEY RH6 7BB

EPC Rating: D Council Tax  
Band: F

Tenure: Freehold

**view this property online [connells.co.uk/Property/HLY404925](http://connells.co.uk/Property/HLY404925)**



1. MONEY LAUNDERING REGULATIONS Intending purchasers will be asked to produce identification documentation at a later stage and we would ask for your co-operation in order that there will be no delay in agreeing the sale. 2. These particulars do not constitute part or all of an offer or contract. 3. The measurements indicated are supplied for guidance only and as such must be considered incorrect. Potential buyers are advised to recheck measurements before committing to any expense. 4. We have not tested any apparatus, equipment, fixtures, fittings or services and it is in the buyers interest to check the working condition of any appliances.

Connells Residential is registered in England and Wales under company number 1489613, Registered Office is Cumbria House, 16-20 Hockliffe Street, Leighton Buzzard, Bedfordshire, LU7 1GN. VAT Registration Number is 500 2481 05.

**See all our properties at [www.connells.co.uk](http://www.connells.co.uk) | [www.rightmove.co.uk](http://www.rightmove.co.uk) | [www.zoopla.co.uk](http://www.zoopla.co.uk)**

Property Ref: HLY404925 - 0004