



**Pavenhill, Purton – SN5 4DA**  
Wiltshire

Guide Price **£650,000**

**mcfarlane**  
property.com

# Pavenhill

Purton, Wiltshire

- Expansive Detached Family Home
- FOUR Receptions plus FOUR Bedrooms
- Beautiful ENCLOSED Rear Gardens
- Altered and Extended Family Home
- Versatile Accommodation over Two Floors
- Ideal Opportunity for Annex (details on request)
- Signature Kitchen + Garden Room.
- VIEWING Advised

A simply stunning detached home in the sought after residential setting of Pavenhill Purton.

This deceptive and surprising home boasts approximately 2200 Sq Ft of internal space.

This well presented and proportioned home does not do itself justice from the initial impression and front elevation.



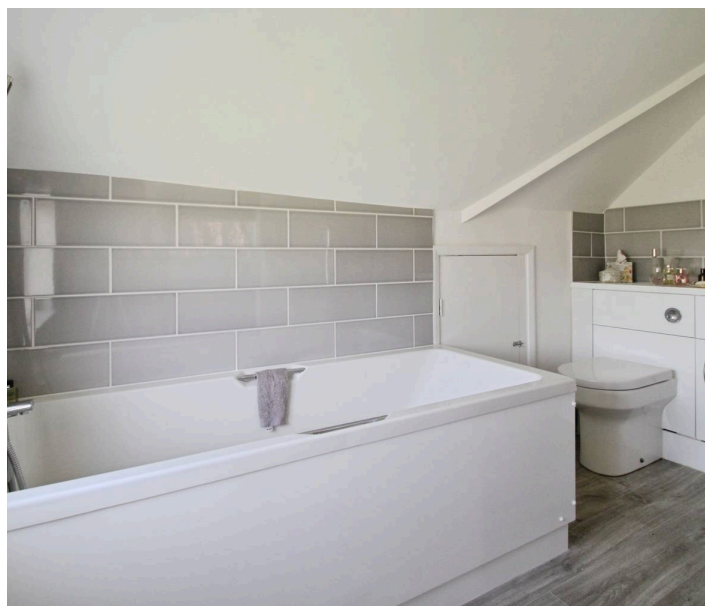
## Pavenhill

Purton, Wiltshire

Purton is a larger village in Wiltshire located about 4 miles from the centre of Swindon. The capital of the Cotswold's Cirencester lies approximately 12.5 miles to the north with both market towns offering considerable amenities and shopping opportunities. Purton boasts a spirited community with schooling and sports and social clubs.

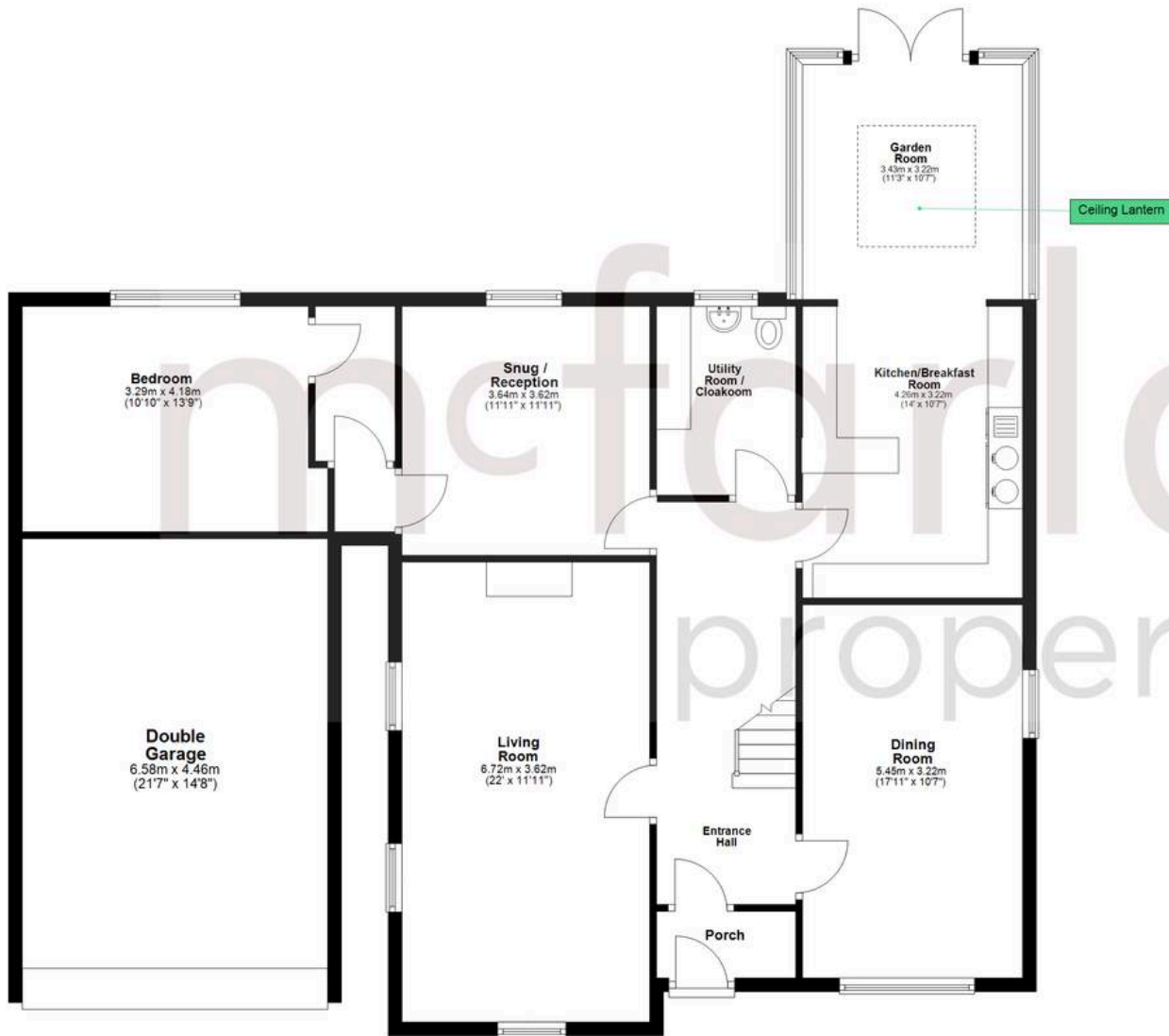
Council Tax band: E

Tenure: Freehold



**mcfarlane**  
property.com

**Ground Floor**  
 Approx. 150.8 sq. metres (1622.8 sq. feet)



**First Floor**  
 Approx. 62.2 sq. metres (669.7 sq. feet)



Total area: approx. 213.0 sq. metres (2292.5 sq. feet)

Agents Note: Whilst every care has been taken to prepare these sales particulars, they are for guidance purposes only. All measurements are approximate and for general guidance purposes only and whilst every care has been taken to ensure their accuracy, they should not be relied upon and potential buyers are advised to recheck the measurements.