



## Haberdasher Street, N1

£650,000

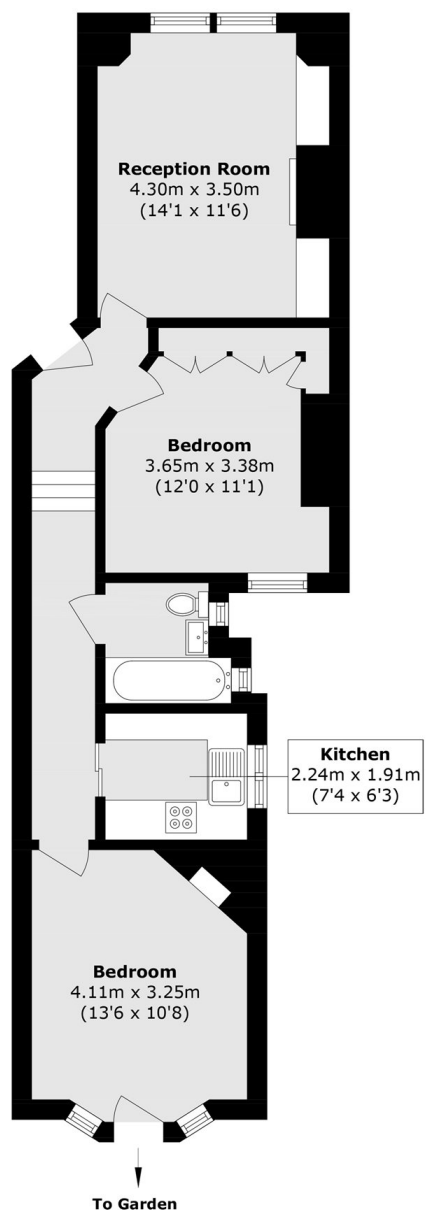
Two bedroom apartments set within a sought location on the ground floor of a 19th-century red-brick building in the Pitfield Street conservation area situated in the middle of a terrace built in 1888 for the families of Metropolitan Police Officers. Original features, including doors and floorboards, sit alongside reinstated panelling and cleverly concealed bespoke joinery. The apartment has a spacious living room with large sashed window allowing for a generous amount of natural light a double bedroom with ample built in storage, a renovated and fully integrated separate kitchen, a refurbished family bathroom and a large, bright second bedroom which leads out to the cheerful communal gardens, which run the length of the street, are shared by the building's residents and can be accessed directly from this home's back door.

Located equidistant from both Hoxton (Windrush line) and Old Street (Northern line), this share of freehold flat is conveniently positioned for access to all corners of the City. The surrounding area offers a vast selection of bars, restaurants and cafés as well as the green space of Shoreditch Park.

### Features

- Two bedrooms
- 19th Century Period conversion
- Fully renovated throughout
- Bright interiors
- Sought after location
- Share of freehold

# Haberdasher Street, London, N1



Total area (approx.): 57.2 sq. m (615.7 sq. ft)