



NICK BROWNE

exp<sup>®</sup> UK

@ nick.browne@exp.uk.com

🌐 nickbrowne.exp.uk.com

☎ 07883 448 911

## 2 Piggots Mead, Houghton Regis

Offers Over £450,000

🛏️ 4 🚿 2 🚗 2

- Four bedrooms, three of which are doubles
- Dual aspect lounge with gas fireplace
- Patio doors opening to a non-overlooked landscaped garden
- Utility room with direct external access onto the driveway
- Detached garage and driveway parking for two vehicles
- Master bedroom with en-suite bathroom
- Spectacular kitchen diner with breakfast bar
- Versatile second reception room suitable as office, dining room, playroom or lounge
- Downstairs W/C
- Ref NB 1604

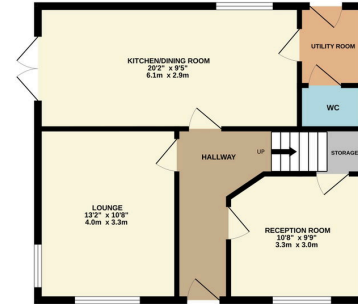


Stunning 4-bed detached home on the modern Thorn development in Houghton Regis. Dual aspect lounge, spectacular kitchen diner, versatile reception room, en-suite master, detached garage and non-overlooked landscaped garden.

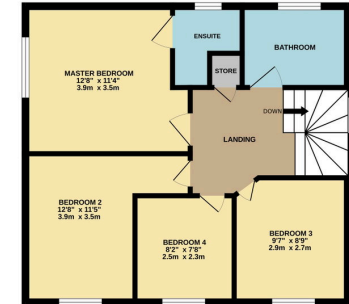




GROUND FLOOR  
574 sq.ft. (53.3 sq.m.) approx.



1ST FLOOR  
566 sq.ft. (52.6 sq.m.) approx.



TOTAL FLOOR AREA: 1140 sq.ft. (105.9 sq.m.) approx.

While every attempt has been made to ensure the accuracy of the Brochure contained here, measurements of floors, windows, rooms and any other items are approximate and no responsibility is taken for any error or omission in this statement. This plan is for illustrative purposes only and should be used as such by any prospective purchaser. The services, systems and appliances shown have not been tested and no guarantee as to their operability or efficiency can be given.  
Made with Metropix ©2008

