

Buy. Sell. Rent. Let.



Bargate, Grimsby



When it comes to
property it must be


lovelle



Offers over £94,950

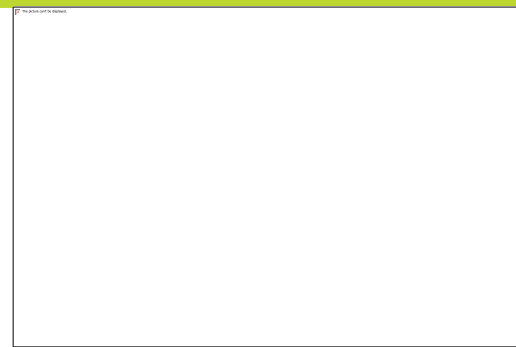
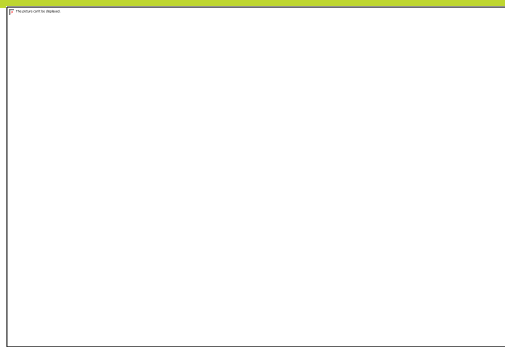


****NO CHAIN**** A two-bedroom first-floor flat in Grimsby's Bargate area, with spacious rooms, communal gardens and allocated parking, offering gas central heating and uPVC double glazing, sold with no chain close to the town centre and transport links.

Key Features

- First Floor Flat
- Spacious Accommodation
- uPVC DG & GCH
- Two Double Bedrooms
- Pleasant Shared Communal Gardens
- Allocated Parking
- EPC rating C
- Tenure: Leasehold





Lovelle offers to market a two-bedroom first-floor flat on Bargate offering an excellent opportunity for buyers seeking a property ready to move in but with potential to update and add value.

Accessed via a communal entrance serving just two flats, this first-floor home comprises a spacious lounge with bay window, a kitchen with wall and base units, sink, space for an oven and plumbing for a washer, and a bathroom with a shower over the bath, sink and WC. There are two bedrooms, each benefiting from built-in wardrobes. The flat is uPVC double glazed and gas central heated for efficiency and comfort.

Externally, there are pleasant communal gardens to be enjoyed and allocated parking, adding convenience. The property is offered with no chain and will appeal to first-time buyers, investors, professionals and retirees.

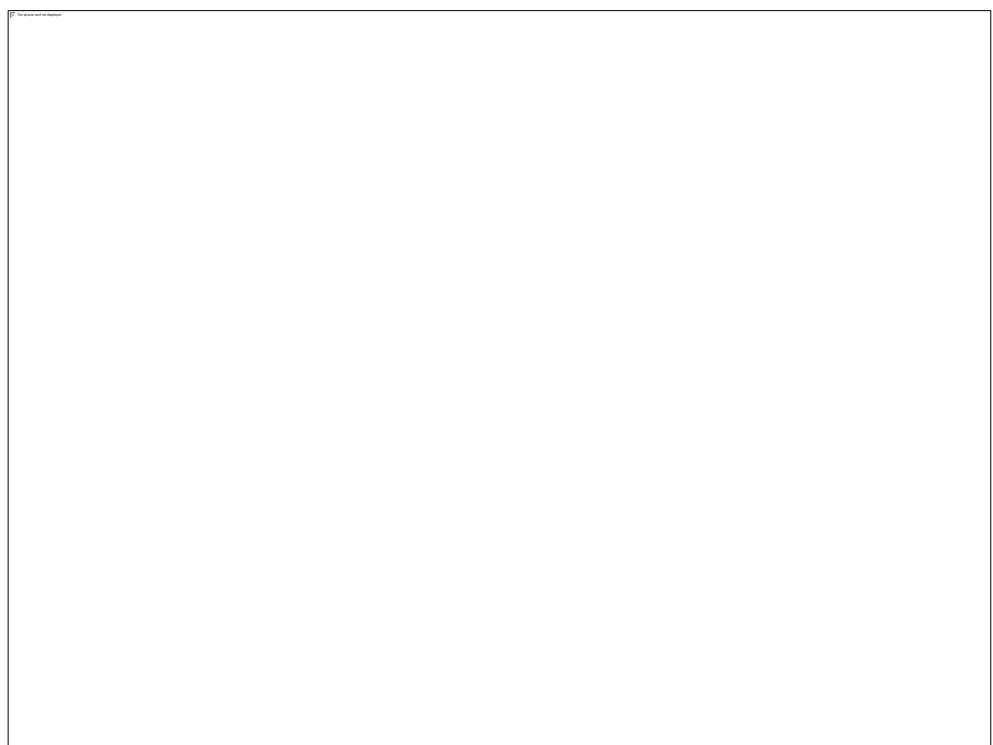
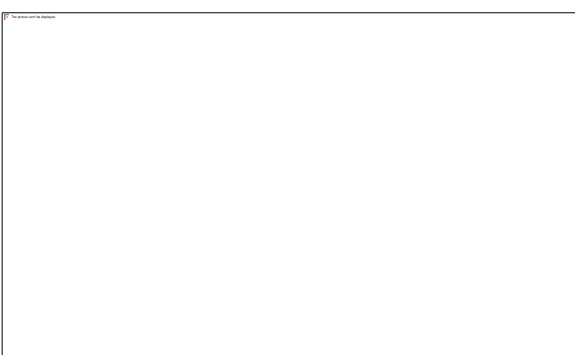
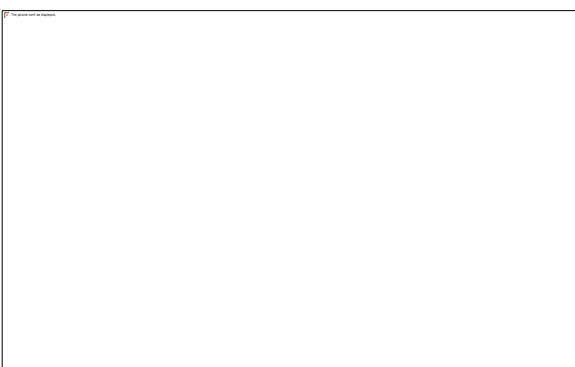
The flat is well positioned in Grimsby town centre, with its range of shops, supermarkets and local amenities. Nearby parks provide green space for walking and recreation. Regular bus services operate along main routes into and around Grimsby, while Grimsby Town railway station offers services to destinations including Manchester and Newark, with onward connections to London; journey times to regional hubs such as Doncaster are typically around an hour by train. The area is also convenient for local schools and healthcare facilities, and there is good road access towards the A180 for commuters.

Disclaimer

We endeavour to make our sales particulars accurate and reliable, however, they do not constitute or form part of an offer or any contract and none is to be relied upon as statements of representation or fact. Any services, systems and appliances listed in this specification have not been tested by us and no guarantee as to their operating ability or efficiency is given. All measurements have been taken as a guide to prospective buyers only and are not precise. If you require clarification or further information on any points, please contact us, especially if you are travelling some distance to view.

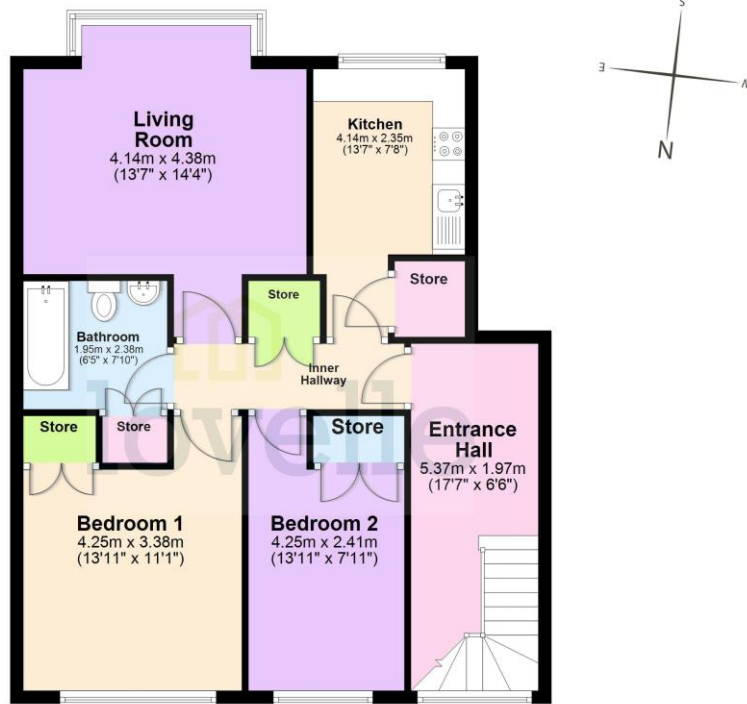
Mobile and broadband

It is advised that prospective purchasers visit checker. Ofcom. org.uk to review available Wi-Fi speeds and mobile connectivity at the property.



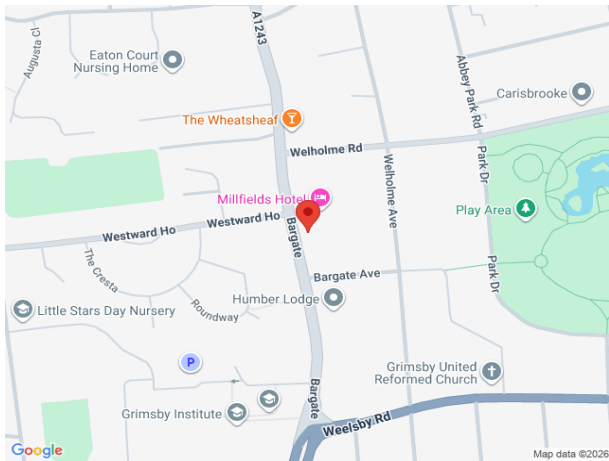
First Floor Flat

Approx. 72.7 sq. metres (782.5 sq. feet)



Total area: approx. 72.7 sq. metres (782.5 sq. feet)

The provided floor plan is intended for general informational purposes only and may not accurately represent the exact dimensions, layout, or features of the property. The floor plan should not be relied upon for making decisions about purchasing, renting, or modifying the property. Actual measurements and features may vary. It is recommended that interested parties conduct a physical inspection of the property to verify the accuracy of the floor plan and obtain specific information about the property's condition, amenities, and any other relevant details.
Plan produced using PlanUp.



lovelle

When it comes to **property**
it must be

01472 251918

grimsby@lovelle.co.uk

