



Mulberry Green, Harlow,

Price Guide £795,000



Geoffrey  
Matthew



Sitting in the historic conservation area of Mulberry Green. The area retains much of its original character. A 5 bedroom period family home built circa 1892. The property has been in the same family for the last 4 decades. Many original period features including refurbished windows fire places lovely high ceilings. Four reception rooms family kitchen down stairs wc and shower room. Five bedrooms to the first floor en-suite shower room to the master bedroom and family bathroom. Blocked paved drive to the side and rear. Attractive gardens.

Mulberry Green is within walking distance of the Old Town centre. Within easy reach of the M11 junction 7a and the train stations of Harlow Mill and Harlow Town. Harlow town centre is 10 minutes away with Epping Sawbridgeworth and Bishops Stortford also nearby.





- Five Bedroom family Home
- Four Reception Rooms
- Down Stairs Shower Room
- Family Bathroom
- Downstairs WC
- En-Suite Shower Room
- Detached Double Garage.
- Hidden Air raid Shelter
- Conservation Area
- Close to Amenities.









**Living Room**  
14'10 x 13'6" (4.52m x 4.11m)

**Dining Room**  
13'11"x13,5"

**Kitchen**  
17'1" x 13' (5.21m x 3.96m)

**Laundry Room**

**Shower Room**

**WC**

**Hobby Room**  
13'x8'1" (3.96m x 2.46m)

**Office**  
12'3" x 9'10" (3.73m x 3.00m)

**Bedroom**  
13,9" x 13'5" (3.96m, 2.74m x 4.09m)

**Bedroom**  
14'10x13'7" (4.52mx4.14m)

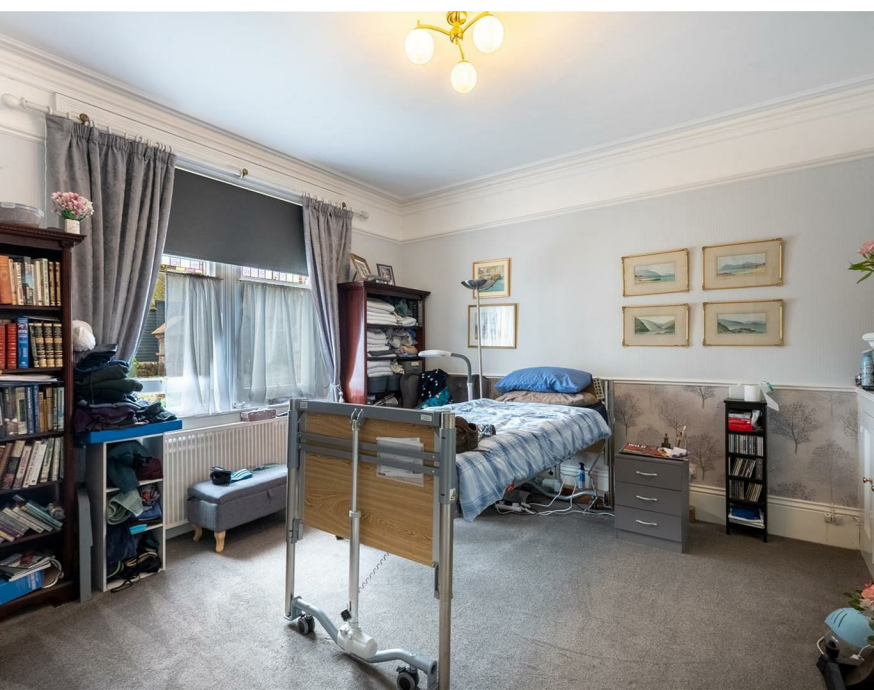
**Bedroom**  
12'3" x 9,11" (3.73m x 2.74m, 3.35m)

**Bedroom**  
10'3" x 10'4" (3.12m x 3.15m)

**Bedroom**  
12'11" x 9'3" (3.94m x 2.82m)

**Family Bathroom**





## Council Tax Details

Harlow Council G

Energy Efficiency Rating		Environmental Impact (CO <sub>2</sub> ) Rating	
Current	Potential	Current	Potential
Very energy efficient - lower running costs (92-100) <b>A</b>		Very environmentally friendly - lower CO <sub>2</sub> emissions (81-81) <b>A</b>	
(81-91) <b>B</b>		(69-80) <b>B</b>	
(69-80) <b>C</b>		(55-68) <b>C</b>	
(55-68) <b>D</b>		(39-54) <b>D</b>	
(39-54) <b>E</b>		(21-38) <b>E</b>	
(21-38) <b>F</b>		(1-20) <b>F</b>	
(1-20) <b>G</b>		Not environmentally friendly - higher CO <sub>2</sub> emissions (1-20) <b>G</b>	

Not energy efficient - Higher running costs  
 EU Directive 2002/91/EC

Not environmentally friendly - Higher CO<sub>2</sub> emissions  
 EU Directive 2003/91/EC



These particulars, whilst believed to be accurate are set out as a general guideline only and do not constitute any part of an offer or contract. Intending purchasers should not rely on them as statements of representation of fact, but must satisfy themselves by inspection or otherwise as to their accuracy. No person in this firm's employment has the authority to make or give any representation or warranty in respect to the property.

