



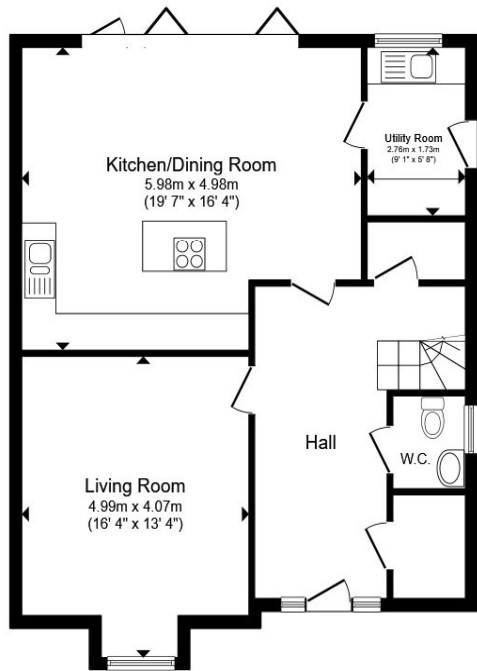
Town Wood Close, Lindfield, Haywards Heath RH16 2GQ

welcome to

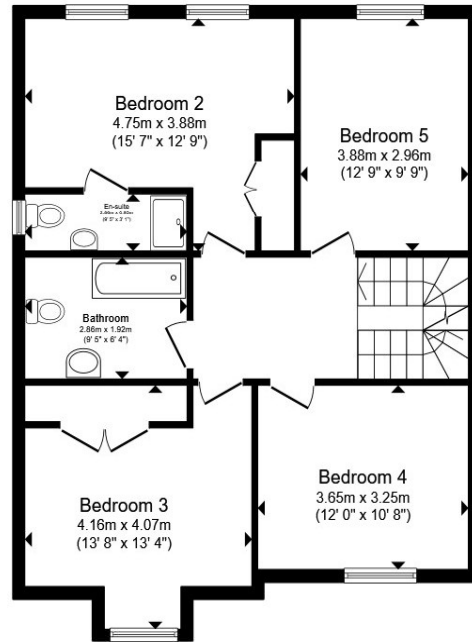
Town Wood Close, Lindfield, Haywards Heath

****STAMP DUTY INCENTIVES AVAILABLE**** A brand new five-bedroom detached family home finished to a high specification, featuring a stunning open-plan kitchen/dining room with integrated Neff appliances and bi-fold doors opening onto the rear garden. Ideally situated close to well-regarded schools.

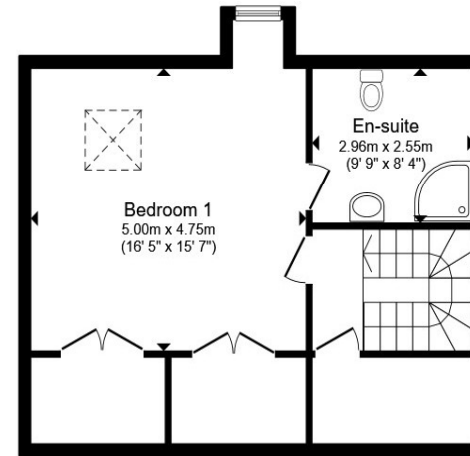




Ground Floor



First Floor



Second Floor

Total floor area 194.4 m² (2,092 sq.ft.) approx

This floor plan is for illustrative purposes only. It is not drawn to scale. Any measurements, floor areas (including any total floor area), openings and orientation are approximate. No details are guaranteed, they cannot be relied upon for any purpose and they do not form part of any agreement. No liability is taken for any error, omission or misstatement. A party must rely upon its own inspection(s). Powered by www.propertybox.io



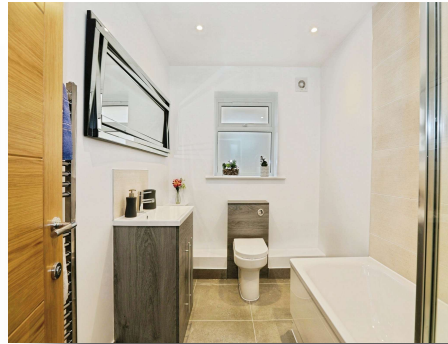
welcome to

Town Wood Close, Lindfield, Haywards Heath

- ****Stamp Duty Incentives Available**** and AHCI new homes warranty
- Choice of two brand new five-bedroom detached family home
- Stunning open-plan kitchen/dining room with shaker-style units and Silestone worktops. Integrated Neff appliances including island with venting induction hob
- Spacious living room plus ground floor W.C.
- Four first floor double bedrooms, one with en-suite plus family bathroom
- Top floor principal suite with en-suite shower room and fitted wardrobes
- Underfloor heating to ground floor and double-glazed UPVC windows throughout
- Large rear garden with patio, parking to front for three cars and situated within easy reach of Haywards Heath mainline station

Tenure: Freehold EPC Rating: A

£970,000



Please note the marker reflects the postcode not the actual property

view this property online fox-and-sons.co.uk/Property/HHT110284



Property Ref:
HHT110284 - 0008

1. MONEY LAUNDERING REGULATIONS Intending purchasers will be asked to produce identification documentation at a later stage and we would ask for your co-operation in order that there is no delay in agreeing the sale. 2. These particulars do not constitute part or all of an offer or contract. 3. The measurements indicated are supplied for guidance only and as such must be considered incorrect. Potential buyers are advised to recheck measurements before committing to any expense. 4. We have not tested any apparatus, equipment, fixtures or services and it is in the buyers interest to check the working condition of any appliances. 5. Where an EPC, or a Home Report (Scotland only) is held for this property, it is available for inspection at the branch by appointment. If you require a printed version of a Home Report, you will need to pay a reasonable production charge reflecting printing and other costs. 6. We are not able to offer an opinion either written or verbal on the content of these reports and this must be obtained from your legal representative. 7. Whilst we take care in preparing these reports, a buyer should ensure that his/her legal representative confirms as soon as possible all matters relating to title including the extent and boundaries of the property and other important matters before exchange of contracts.

Fox & Sons is a trading name of Sequence (UK) Limited which is registered in England and Wales under company number 4268443, Registered Office is Cumbria House, 16-20 Hockliffe Street, Leighton Buzzard, Bedfordshire, LU7 1GN. VAT Registration Number is 500 2481 05.


fox & sons



01444 450105



HaywardsHeath@fox-and-sons.co.uk



115 South Road, HAYWARDS HEATH, West
Sussex, RH16 4LR



fox-and-sons.co.uk