



564333 Willand Road, Cullompton, EX15 1XY
£2,160 Per month



564333 Willand Road, Cullompton, EX15 1XY

£2,160 Per month

Enjoy all of the benefits of a McCarthy & Stone retirement community with our affordable and flexible assured periodic tenancies, so you can rent your property for as long as you want.

Foxglove Place - Designed for the over-60s, Foxglove Place combines independent living with first-class facilities, including a stylish homeowners' lounge at the social heart of the development, beautiful landscaped gardens, a mobility scooter store and a guest suite for visiting family. A House Manager oversees the smooth day-to-day running, and a 24-hour emergency call system offers complete peace of mind. With regular coffee mornings, quiz nights and seasonal events, it's easy to make friends - though residents are free to join in as much or as little as they wish.

A beautifully presented two-bedroom ground floor retirement apartment with direct access from the living room onto a private patio and the landscaped communal gardens.

The bright, dual-aspect living room features a modern electric fireplace and opens straight onto the patio. The contemporary kitchen offers a full range of integrated appliances, while both double bedrooms are well proportioned - the master with a walk-in wardrobe and the second ideal as a guest room, dining room or study. A modern shower room provides level-access bathing, and the property comes with its own privately owned parking space.

The Local Area – Set in the tranquil Culm Valley, the award-winning market town of Cullompton is surrounded by the Blackdown Hills Area of Outstanding Natural Beauty, with the city of Exeter close by. The development sits just 0.2 miles from the town centre, with supermarkets and amenities within easy reach.

Description



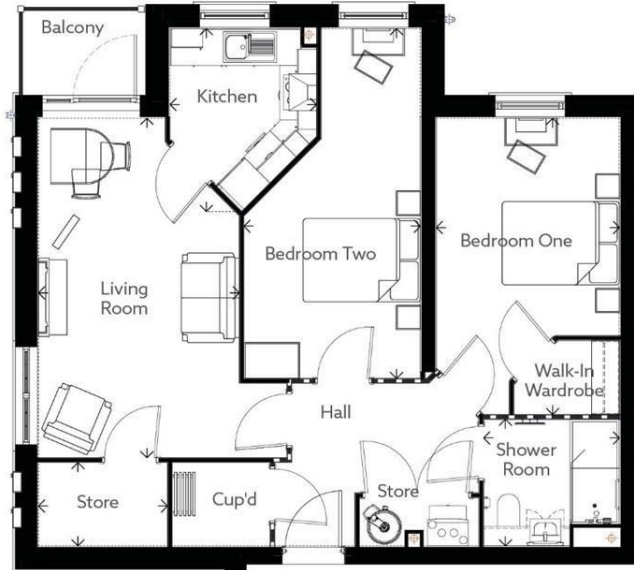
Situation



Unfurnished
Council Tax Band:
Available:

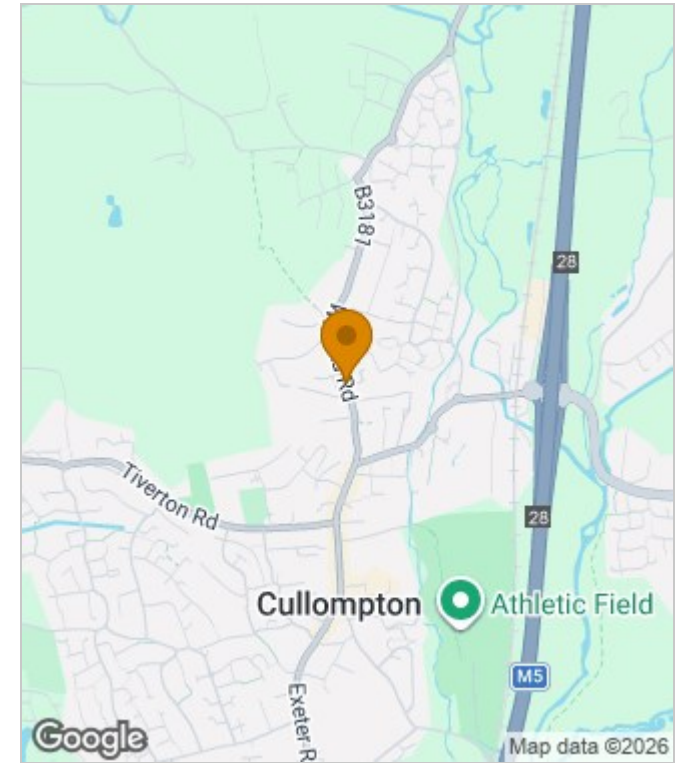
Floor Plans

38
764.81 SQFT
71.05 SQM

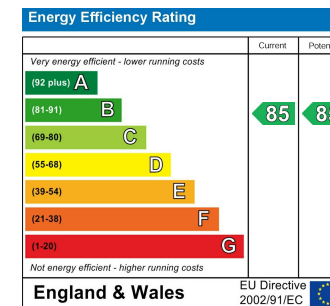


Living Room (Max)	18'-0 1/2" x 13'-2 1/2"	5498mm x 4024mm
Kitchen (Max)	9'-8 1/2" x 7'-9 1/2"	2963mm x 2373mm
Bedroom 1 (Max)	15'-9" x 9'-8 1/2"	4798mm x 2965mm
Bedroom 2 (Max)	18'-7" x 9'-4 1/2"	5667mm x 2856mm
Shower Room (Max)	6'-8 1/2" x 7'-2 1/2"	2050mm x 2200mm
Store (Max)	4'-5" x 6'-10"	1351mm x 2089mm
Balcony (Max)	6'-4" x 4'-6"	1925mm x 1370mm

Area Map



Energy Performance Graph



These particulars, whilst believed to be accurate are set out as a general outline only for guidance and do not constitute any part of an offer or contract. Intending purchasers should not rely on them as statements of representation of fact, but must satisfy themselves by inspection or otherwise as to their accuracy. No person in this firm's employment has the authority to make or give any representation or warranty in respect of the property.