



WHITLOCKS
ESTATE AGENTS

Pryors Green, Aldwick, Bognor Regis
£260,000



This well-presented two-bedroom home offers bright and spacious accommodation throughout, making it an ideal purchase for first-time buyers, investors, or those looking to downsize without compromising on space. The property is entered via a welcoming hallway that leads to a generous living room, providing an excellent space for both relaxation and entertaining. Flooded with natural light, this inviting room enjoys a pleasant outlook and ample space for a variety of furniture arrangements.

The well-proportioned kitchen offers a range of fitted units, generous worktop space, and room for everyday dining, creating a practical and functional heart of the home.

To the first floor, there are two spacious double bedrooms. The principal bedroom is particularly impressive, while the second bedroom is a comfortable double, offering flexibility for guests, family members or those working from home. A family bathroom and separate WC complete the first-floor accommodation.

The property benefits from a well-designed layout, good storage provision, excellent natural light throughout and access to communal parking. Conveniently situated close to local amenities, schools and transport links, it offers comfortable living in a popular residential location.

Offering generous room proportions and excellent potential, this attractive home presents a fantastic opportunity for a wide range of purchasers.

Early viewing is highly recommended to appreciate the accommodation on offer.

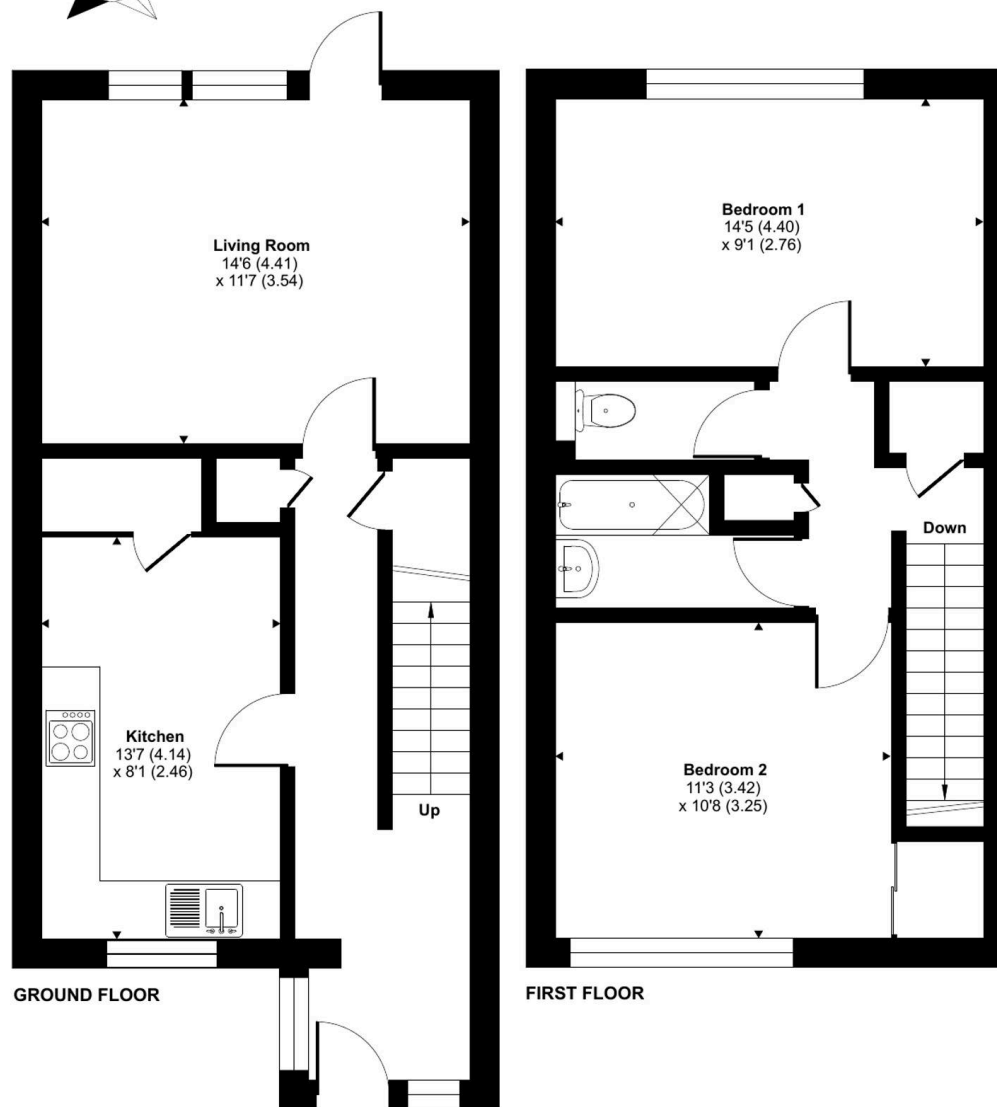


Aldwick is an attractive, tranquil Village with royal connections and a stunning coastline. Aldwick offers many prestigious Privates Estates and Roads such Aldwick Bay Estate, Craigweil Private Estate, Aldwick Place, Aldwick Avenue and many others. Bognor's famous promenade starts at Aldwick Beach Huts and stretches all the way over to Felpham. Marine Park Gardens is also a point of interest and consist of a waterfront Park with a stunning array of well maintained flower displays, a fountain and a seasonal 18 hole putting green. The area also benefits from many notable waterfront Pubs and Restaurants. Within easy access to the popular Village of Rose Green as well as Aldwick Shopping Parade where a comprehensive variety of amenities can be found.

Whitlock Estate Agents Limited trading as Whitlocks Estate Agents for themselves and for the vendor or lessors of this property whose agents they are, give notice that (i) these particulars do not constitute any part of an offer or contract, (ii) all statements contained within these particulars are made without responsibility on the part of Whitlocks Estate Agents or the vendor, (iii) whilst made in good faith, none of the statements contained within these particulars are to be relied upon as a statement or representation of fact, (iv) any intending purchasers must satisfy themselves by inspection or otherwise as to the correctness of each of the statements contained within these particulars, (v) the vendor does not make or give either Whitlocks Estate Agents or any person in their employment any authority to make or give representation or warranty whatsoever in relation to this property. Wide angle lenses may be used.

Pryors Green, Bognor Regis, PO21

Approximate Area = 846 sq ft / 78.5 sq m
For identification only - Not to scale



Floor plan produced in accordance with RICS Property Measurement 2nd Edition, Incorporating International Property Measurement Standards (IPMS2 Residential). © ncthecom 2026. Produced for Whitlocks Estate Agents. REF: 1469160





Whitlocks Estate Agents - Bognor Regis & Pagham

Whitlocks Estate Agents, 229 Pagham Road - PO21 3QD

01243 262747 • sales@whitlocksestateagents.co.uk • whitlocksestateagents.co.uk/

Council Tax band: C

Tenure: Freehold

EPC Energy Efficiency Rating: D

EPC Environmental Impact Rating: