



Malmesbury Road , Coventry, CV6 2HY Offers over £225,000

Evans Estates is delighted to present this charming three-bedroom mid-terrace family home, located on Malmesbury Road in the desirable Whitmore Park area of Coventry. This property is offered with no upward chain, making it an ideal choice for those looking to move in without delay.

As you enter the home, you are welcomed by a spacious entrance hall that leads into a bright and airy through lounge diner, perfect for family gatherings and entertaining guests. The kitchen is conveniently situated, providing a functional space for culinary pursuits.

On the first floor, you will find three well-proportioned bedrooms, offering ample space for family living or guest accommodation. The property also features a recently refitted shower room, ensuring modern comfort and convenience.

Additional benefits of this home include double glazing and gas central heating, which contribute to a warm and inviting atmosphere throughout. Externally, the property boasts gardens to both the front and rear, providing outdoor space for relaxation and play. The rear garden also offers access to a garage, adding to the practicality of this lovely home.

Situated within the catchment area for The President Kennedy School, this property is

- No Upward Chain
- Three Bedrooms
- Lounge and Kitchen
- President Kennedy School Catchment
- Rear Access to a Garage

Viewing

Please contact our Evans Estates Office on 02476333363 if you wish to arrange a viewing appointment for this property or require further information.



3



1

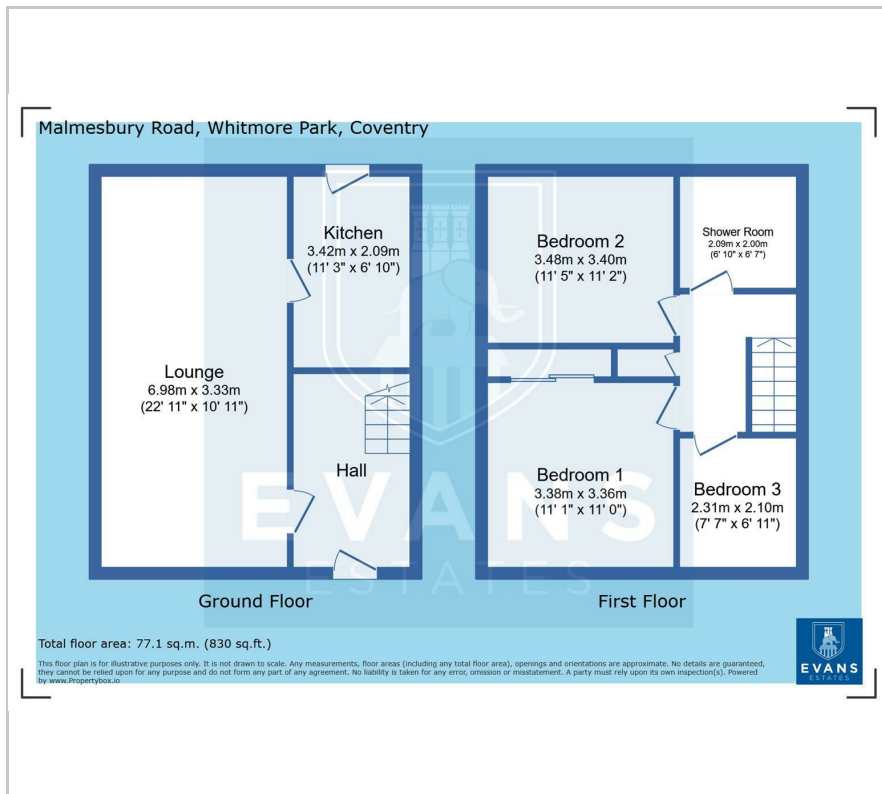


1



D

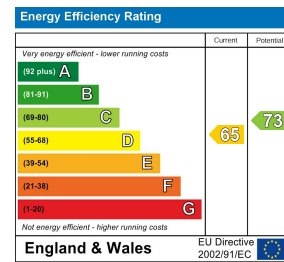
Floor Plan



Area Map



Energy Efficiency Graph



These particulars, whilst believed to be accurate are set out as a general outline only for guidance and do not constitute any part of an offer or contract. Intending purchasers should not rely on them as statements of representation of fact, but must satisfy themselves by inspection or otherwise as to their accuracy. No person in this firm's employment has the authority to make or give any representation or warranty in respect of the property.

47 Headington Avenue, Coventry, West Midlands, CV6 2GX
Tel: 02476333363 Email: info@evans-estates.co.uk https://www.evans-estates.co.uk