



Connells

Ruby Close  
Langley Maidstone



### Property Description

Tucked away in a peaceful cul-de-sac location, Ruby Close is a thoughtfully laid-out home offering bright and versatile living space in a popular Maidstone setting.

The property welcomes you through an inviting entrance hall which leads to a generously sized living room, ideal for both relaxing evenings and entertaining guests. The kitchen is well arranged with ample worktop and storage space, providing a practical yet sociable environment for everyday living and dining. Patio doors open out to the garden, allowing plenty of natural light and seamless indoor-outdoor flow.

Upstairs, the accommodation continues with well-proportioned bedrooms, each benefiting from good natural light and flexible space for wardrobes or home-working arrangements. The family bathroom is neatly finished and serves the bedrooms comfortably.

Externally, the rear garden is a particular highlight — mainly laid to lawn with space for outdoor seating, perfect for summer dining and family enjoyment.

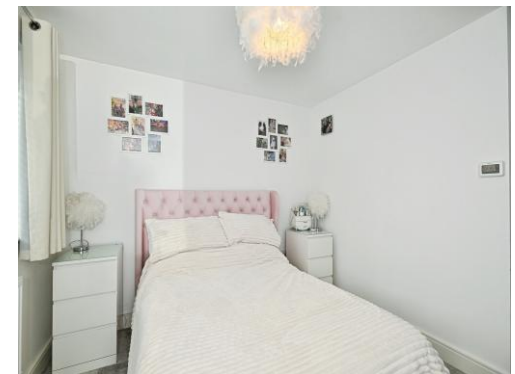
To the front, the property offers off-street parking, adding further convenience.

Ruby Close is ideally positioned for access to local schools, shops and green spaces, while Maidstone town centre, mainline stations and road links are within easy reach — making this an excellent choice for a wide range of buyers.



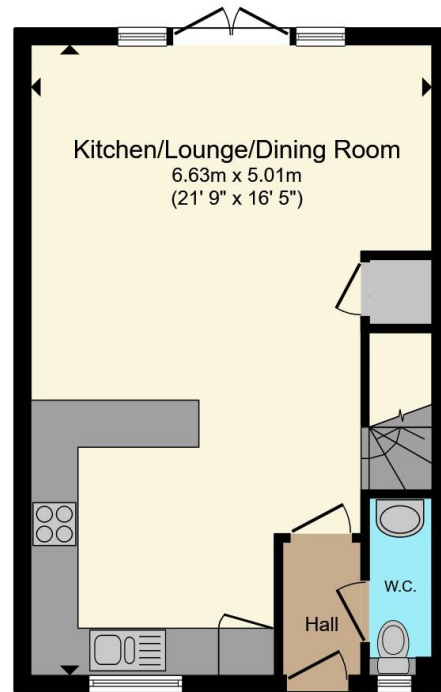
## Agents Note

Management fee of £360 due per annum

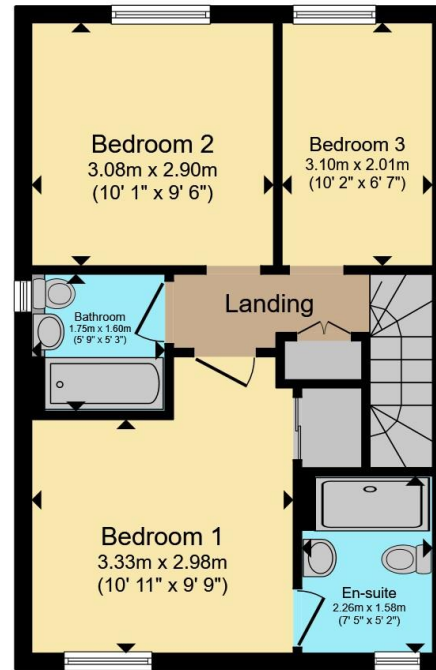








**Ground Floor**



**First Floor**

Total floor area 81.9 m<sup>2</sup> (882 sq.ft.) approx

This floor plan is for illustrative purposes only. It is not drawn to scale. Any measurements, floor areas (including any total floor area), openings and orientation are approximate. No details are guaranteed, they cannot be relied upon for any purpose and they do not form part of any agreement. No liability is taken for any error, omission or misstatement. A party must rely upon its own inspection(s). Powered by [www.propertybox.io](http://www.propertybox.io)



To view this property please contact Connells on

**T 01622 751034**  
**E [maidstone@connells.co.uk](mailto:maidstone@connells.co.uk)**

30 King Street  
 MAIDSTONE ME14 1BS

EPC Rating: B Council Tax Band: D

Tenure: Freehold

**view this property online [connells.co.uk/Property/MAI408648](http://connells.co.uk/Property/MAI408648)**



1. MONEY LAUNDERING REGULATIONS Intending purchasers will be asked to produce identification documentation at a later stage and we would ask for your co-operation in order that there will be no delay in agreeing the sale. 2. These particulars do not constitute part or all of an offer or contract. 3. The measurements indicated are supplied for guidance only and as such must be considered incorrect. Potential buyers are advised to recheck measurements before committing to any expense. 4. We have not tested any apparatus, equipment, fixtures, fittings or services and it is in the buyers interest to check the working condition of any appliances.

Connells Residential is registered in England and Wales under company number 1489613, Registered Office is Cumbria House, 16-20 Hockliffe Street, Leighton Buzzard, Bedfordshire, LU7 1GN. VAT Registration Number is 500 2481 05.

**See all our properties at [www.connells.co.uk](http://www.connells.co.uk) | [www.rightmove.co.uk](http://www.rightmove.co.uk) | [www.zoopla.co.uk](http://www.zoopla.co.uk)**

Property Ref: MAI408648 - 0005