



Flat (EPC Rating: C)

MINFORD GARDENS LONDON, W14 0AN

Per month

£1,750 Per

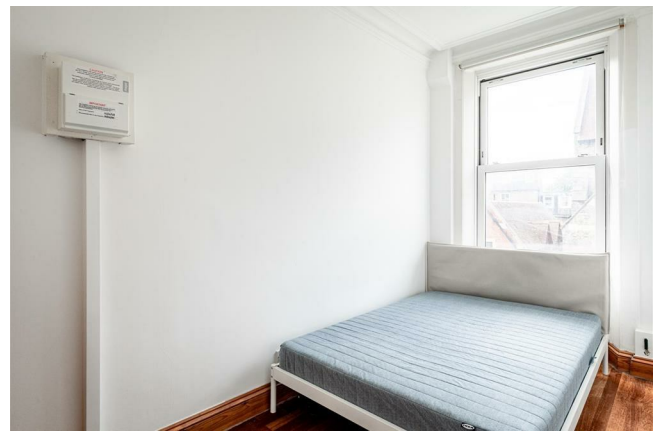
ALEXANDER STEER
Estate Agents



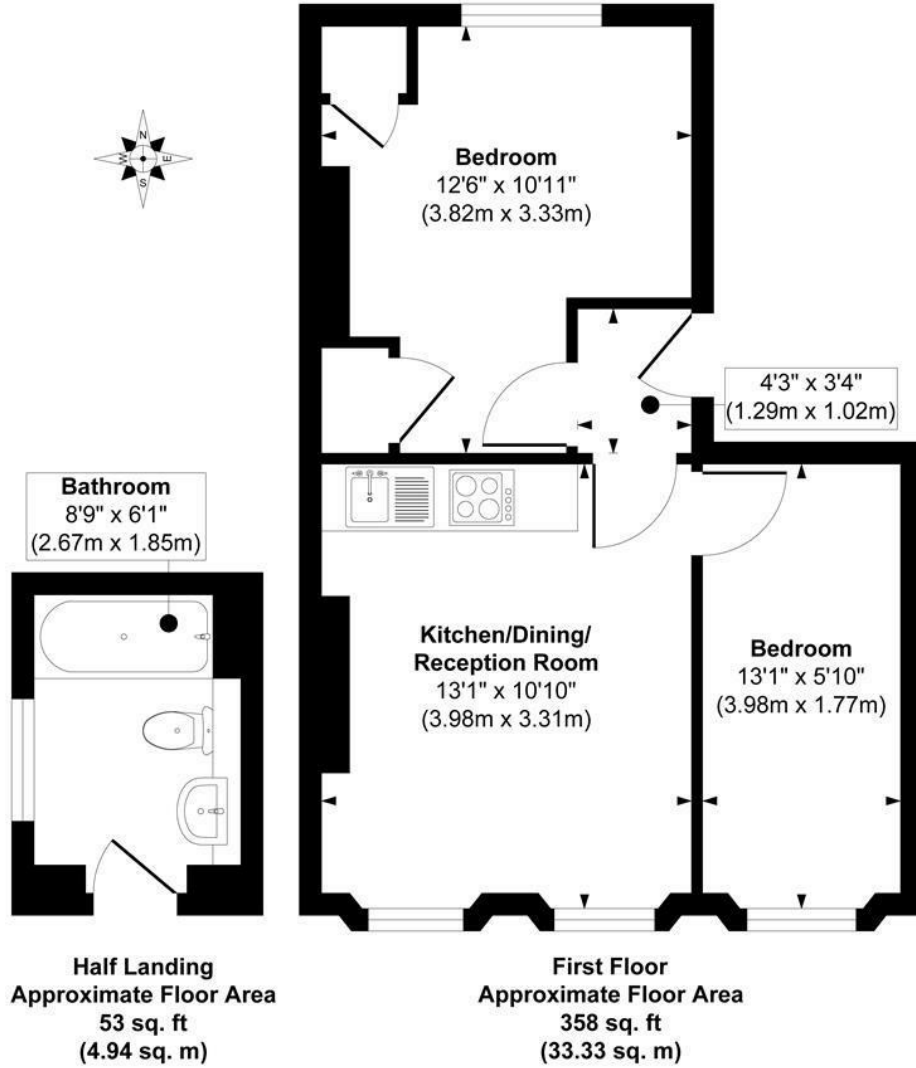
2 BEDROOM FLAT LOCATED IN LONDON

A bright and well-proportioned two-bedroom first floor apartment set within an attractive Victorian conversion on the sought-after Minford Gardens, moments from West Kensington and Barons Court stations. The property features a spacious open-plan reception with fitted kitchen, two bedrooms, a modern bathroom and excellent natural light throughout. High ceilings, large sash windows and wood flooring enhance the bright and airy feel, while the neutral décor provides a blank canvas ready to move straight into.

Minford Gardens is a quiet residential street in the heart of West Kensington, offering excellent access to local shops, cafés and restaurants. West Kensington and Barons Court Underground stations are both within easy walking distance, providing District and Piccadilly Line services across London. Kensington High Street, Brook Green and Holland Park are all nearby, with convenient access to the A4/M4 for motorists.



Minford Gardens



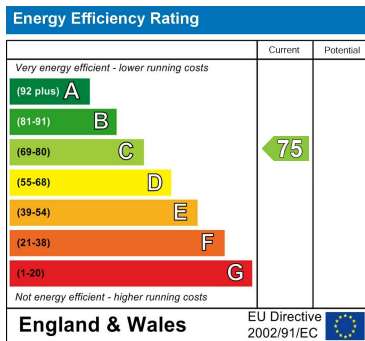
Approx. Gross Internal Floor Area 411 sq. ft / 38.27 sq. m (Including Outbuilding)

Illustration for identification purposes only, measurements are approximate, not to scale.
Produced by Elements Property

Council Tax Band

C

Energy Performance Graph



Call us on

0203 822 0111

hello@alexandersteer.co.uk

alexandersteer.co.uk



@ALEXANDERSTEERPROPERTY

Agents Note: Whilst every care has been taken to prepare these particulars, they are for guidance purposes only. All measurements are approximate and are for general guidance purposes only and whilst every care has been taken to ensure their accuracy, they should not be relied upon and potential buyers are advised to recheck the measurements.