



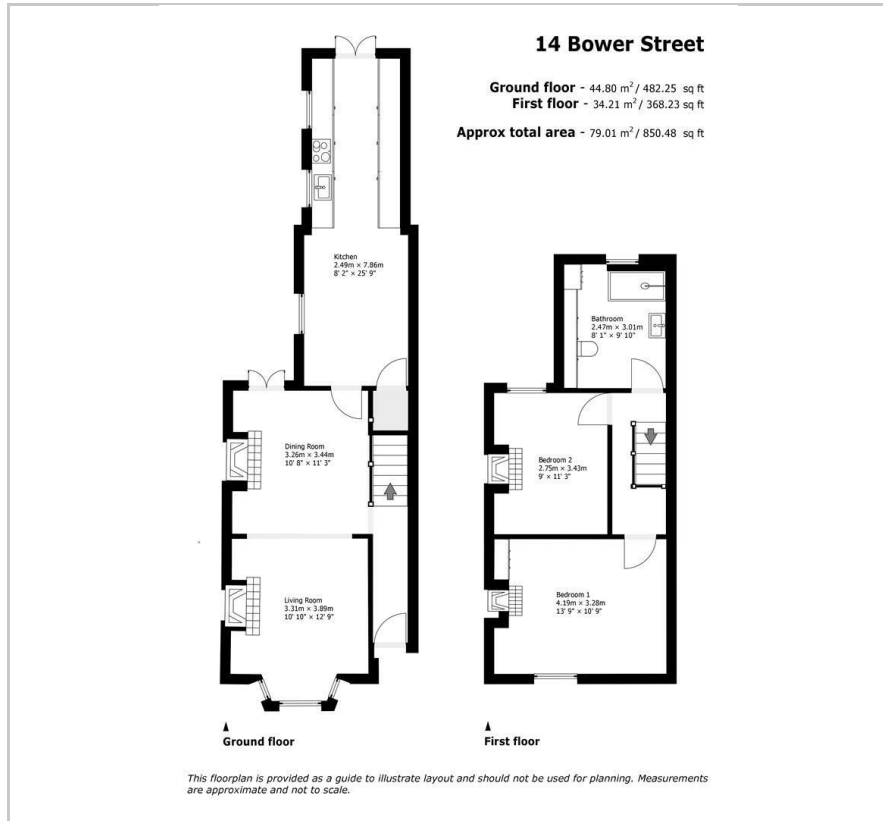
**14 Bower Street**

, Bedford, MK40 3RE

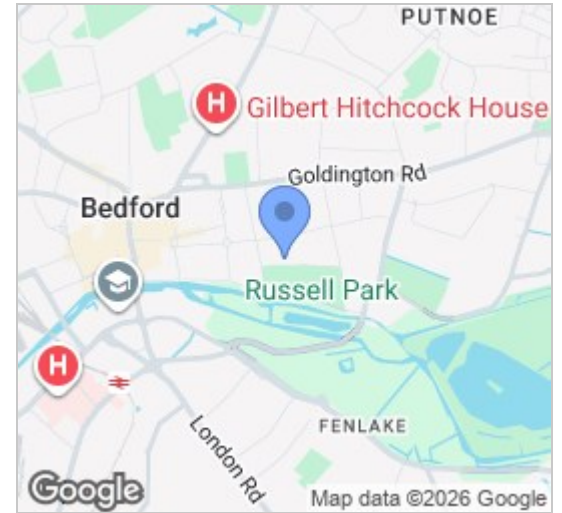
**£365,000**



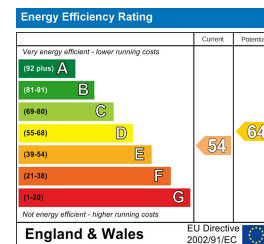
## Floor Plan



## Area Map



## Energy Efficiency Graph



## Viewing

Please contact our Bedford Office on 01234 216612 if you wish to arrange a viewing appointment for this property or require further information.



Situated very close to Russell Park towards the end of a no-through-road, this period bay fronted terraced home is very well presented throughout and provides a popular layout with two double bedrooms, a spacious first floor bathroom and an open plan kitchen/breakfast room with French doors opening to the garden. The living room and dining room have been combined to provide one open space but a cosy front sitting area is retained with fireplace and shutters at the bay window. There is a second fireplace in the dining area which also has a door to the rear garden. The kitchen is well-equipped and has plenty of space for a table or further seating area. The large first floor bathroom is a particular feature having been refitted to include a double walk-in shower. Further features include castle iron fireplaces in both bedrooms, uPVC windows (most replaced in sashes) and gas to radiator heating throughout. Outside, the deeper than usual garden enjoys a sunny west facing aspect, is fully enclosed and has gated access to a passageway to the rear.

The Castle Road area provides a growing choice of eateries including coffee shops, cafes and restaurants. There are also specialist shops such as a butcher, bakery and home improvement stores. In addition to Russell Park, The Embankment is close by, offering lovely riverside walks. Bedford town centre is a short walk away and offers a wider choice of shops and restaurants as well as fast links by rail into London St Pancras. EER: E



**163 Castle Road, MK40 3RT**

**Tel: 01234 216612**

**www.hollandsmith.co.uk**