

Property ref: 34123

Blenheim Gardens, Reading, RG1 5QJ

£1,350 PCM

HASLAM'S
Lettings



A very well presented mid-terraced home located close to Reading town centre and within walking distance of the University. Reading Borough Council tax band C. This property is in the Article 4 area.

Broadband/Mobile Info: Connections available. For an indication of specific speeds and supply of Broadband and Mobile, we advise applicants go to the Ofcom website Broadband and Mobile Coverage Checker.

Available 03/06/2026

- Two double bedrooms
- Separate kitchen including appliances
- Two reception rooms; On street permit parking available
- Three-piece bathroom; EPC rating D
- Rear garden; Gas central heating
- Furnished; Managed by LANDLORD

*Fees For Assured Shorthold Tenancies: when you rent a property from us you will be required to pay a sum equivalent to one weeks' rent for a holding deposit. Upon successful application, this amount will be off set against your first months' rent. You will also be required to pay a security deposit equivalent to 5 weeks' rent which will be held and protected in line with Deposit legislation. For more information about our fees please visit: www.haslams.net
Fees for all other tenancies (Non Housing Act Tenancies / Company Lets): when you rent a property from us we will charge you a one-off fee per property. This charge is the equivalent of 15 days of the monthly rental charge (+VAT) with a minimum fee of £450 (inc.VAT) up to a maximum of £650 (inc.VAT). Other fees may apply depending on your circumstances.

0118 960 1055

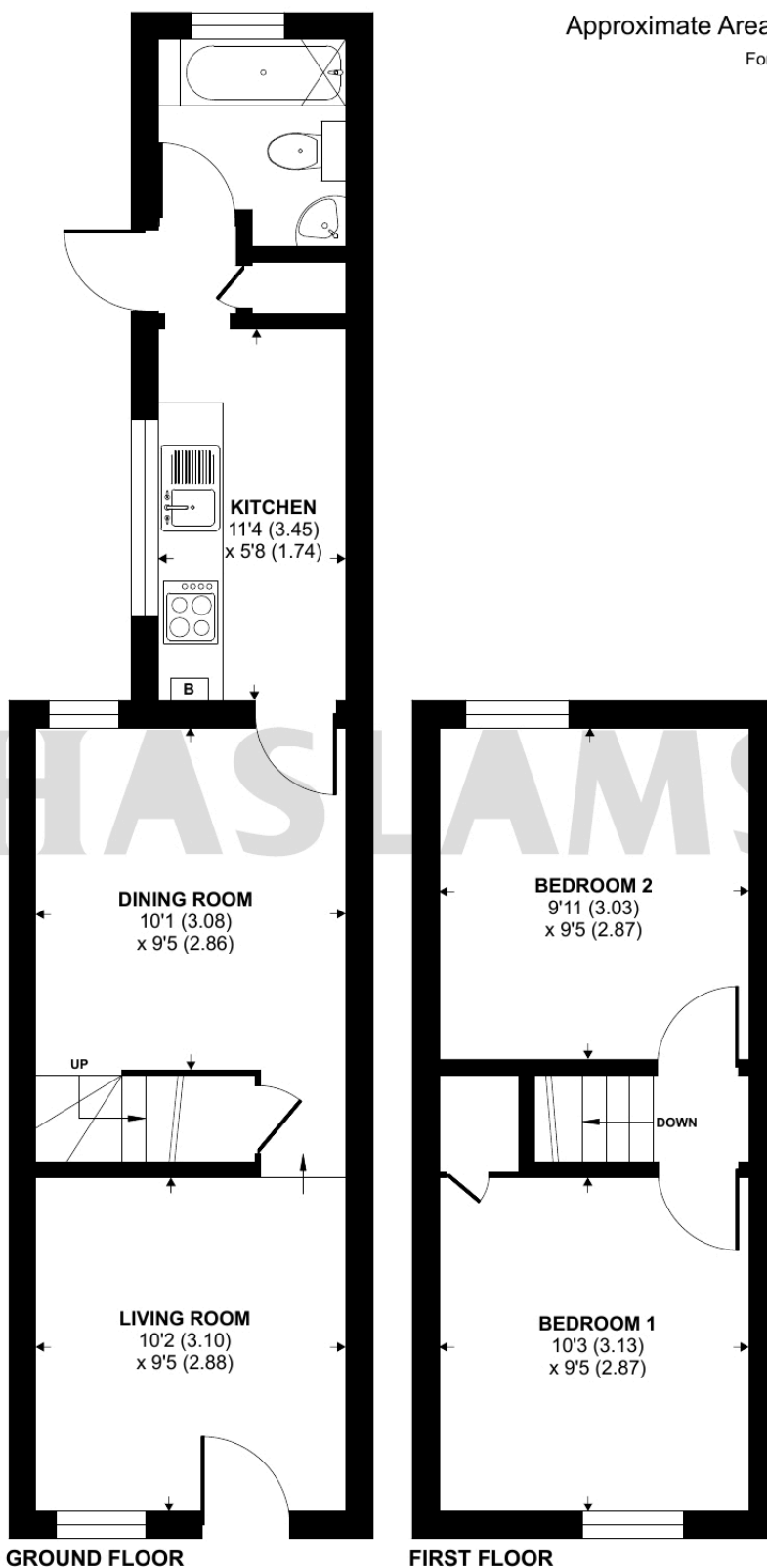
lettings@haslams.net www.haslams.net

Haslams Estate Agents Ltd, 159 Friar Street, Reading, Berkshire, RG1 1HE



Blenheim Gardens, Reading, RG1

Approximate Area = 571 sq ft / 53 sq m
For identification only - Not to scale



 Floor plan produced in accordance with RICS Property Measurement 2nd Edition, Incorporating International Property Measurement Standards (IPMS2 Residential). © n̄cheom 2025. Produced for Haslam's. REF: 1344039