

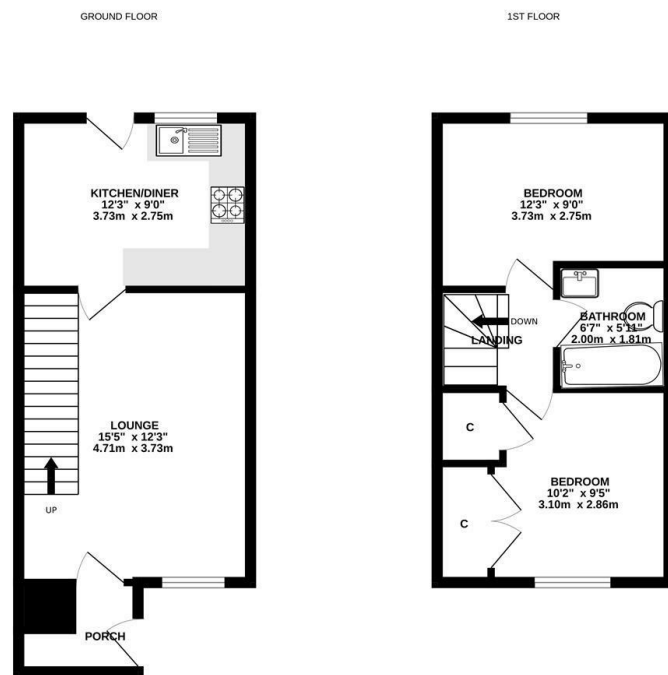
KEYSTONE



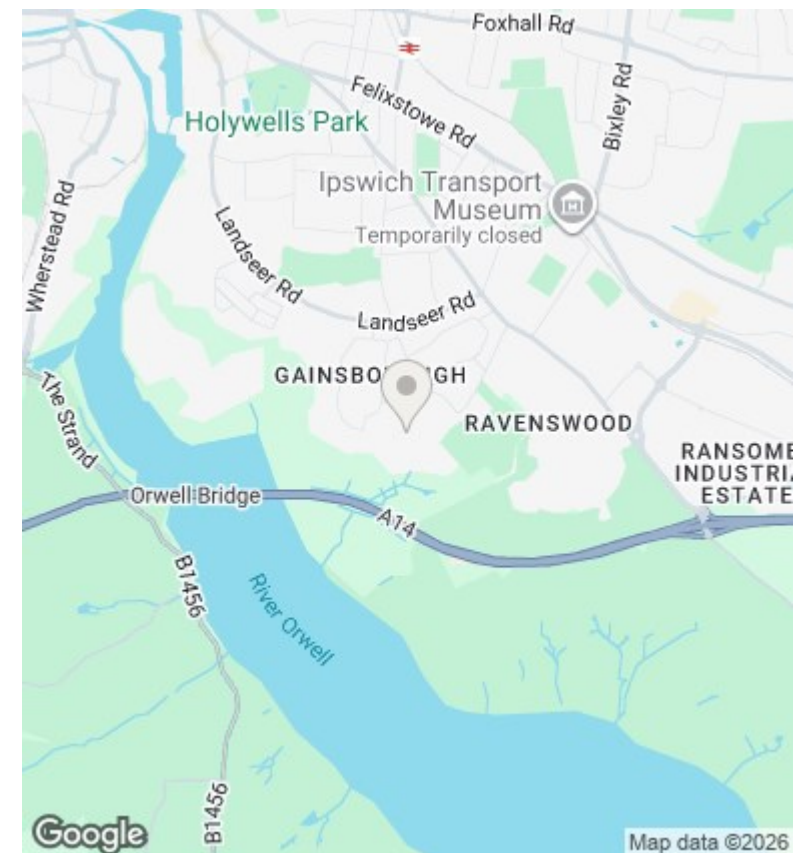
Cole Ness Road, Ipswich, IP3 0SJ

£1,095 PCM

- Unfurnished two bedroom Semi-Detached House
- Fitted kitchen diner
- Driveway & Detached garage
- South East Ipswich
- Lounge
- Gas central heating & double glazed
- Entrance porch
- First floor bathroom with a shower
- EPC rating - C



Whilst every attempt has been made to ensure the accuracy of the floorplan contained here, measurements of doors, windows, rooms and any other items are approximate and no responsibility is taken for any error, omission or misstatement. This plan is for guidance purposes only and should be used as such by any prospective purchaser. The services, systems and appliances shown have not been tested and no guarantee as to their operability or efficiency can be given.
Made with Viewpoint 3.0026



Directions

Viewings

Viewings by arrangement only. Call 01473 221 399 to make an appointment.

EPC Rating:

C

