



Thomas More Street, E1W

 2  1  2  C

£2,750 Per month

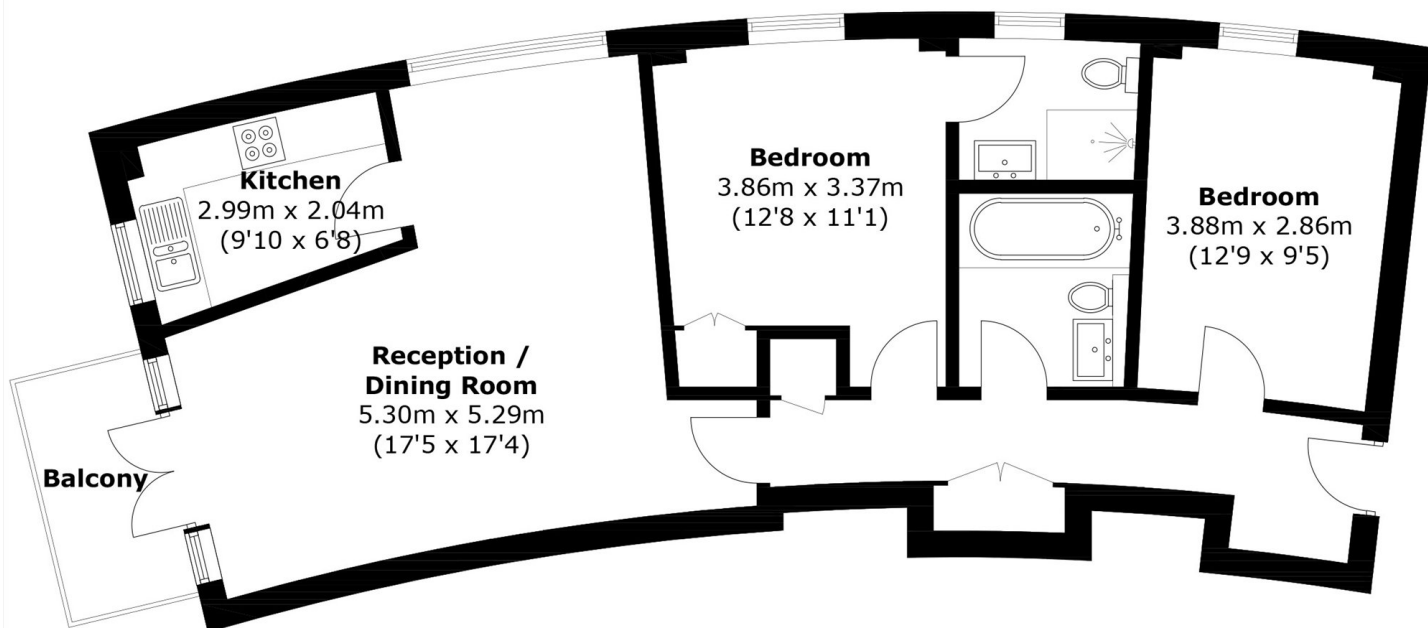
- Two Double Bedroom
- Two Bathroom
- Balcony
- Furnished
- Wapping
- Secure Parking



A well-presented two double bedroom, two bathroom property in the popular Hermitage Waterside development. This apartment offers a semi open plan kitchen living area with private balcony and the building offers access to bike storage, lift access, porter services and parking.

The property is ideally situated, just moments from St Katharine's Docks, with an array of pubs, restaurants, bars, and cafes nearby. Tower Bridge, Aldgate stations, and The City are all within walking distance, while local bus routes offer easy access to Canary Wharf, London Bridge, and Shoreditch.





Total area: Approx. 73.4 sq. meters (790.1 sq. feet)
Plus balcony, approx. 4.1 sq. meters (44.1 sq. feet)

35A Wapping High Street,
London, E1W 1NR
020 7702 3456
ea2group.com



Energy Rating: C We aim to make our particulars both accurate and reliable. However they are not guaranteed; nor do they form part of an offer or contract. If you require clarification on any points then please contact us, especially if you're travelling some distance to view. Please note that appliances and heating systems have not been tested and therefore no warranties can be given as to their good working order.