

Property ref: 85698

Hayward, Chatham Place, Reading, RG1 7AZ

£1,275 PCM

HASLAMs
Lettings



A contemporary seventh floor apartment within walking distance from Reading mainline station, the Oracle shopping centre and local amenities, and within close proximity to the M4 motorway. Reading Borough Council tax band C.

Water supply: Mains

Drainage info: Mains

Electricity supply: Mains

Gas supply: Mains

Broadband/Mobile Info: Connections available. For an indication of specific speeds and supply of Broadband and Mobile, we advise applicants go to the Ofcom website Broadband and Mobile Coverage Checker.

- One double bedroom; Seventh floor apartment
- Fully fitted kitchen; Gas central heating
- Secure allocated parking; Bathroom with shower over bath
- Video entry system and lift; EPC rating B
- Communal gardens; Balcony
- Unfurnished; Managed by HASLAMs

Available 03/02/2026

*Fees For Assured Shorthold Tenancies: when you rent a property from us you will be required to pay a sum equivalent to one weeks' rent for a holding deposit. Upon successful application, this amount will be off set against your first months' rent. You will also be required to pay a security deposit equivalent to 5 weeks' rent which will be held and protected in line with Deposit legislation. For more information about our fees please visit: www.haslams.net
Fees for all other tenancies (Non Housing Act Tenancies / Company Lets): when you rent a property from us we will charge you a one-off fee per property. This charge is the equivalent of 15 days of the monthly rental charge (+VAT) with a minimum fee of £450 (inc.VAT) up to a maximum of £650 (inc.VAT). Other fees may apply depending on your circumstances.

0118 960 1055

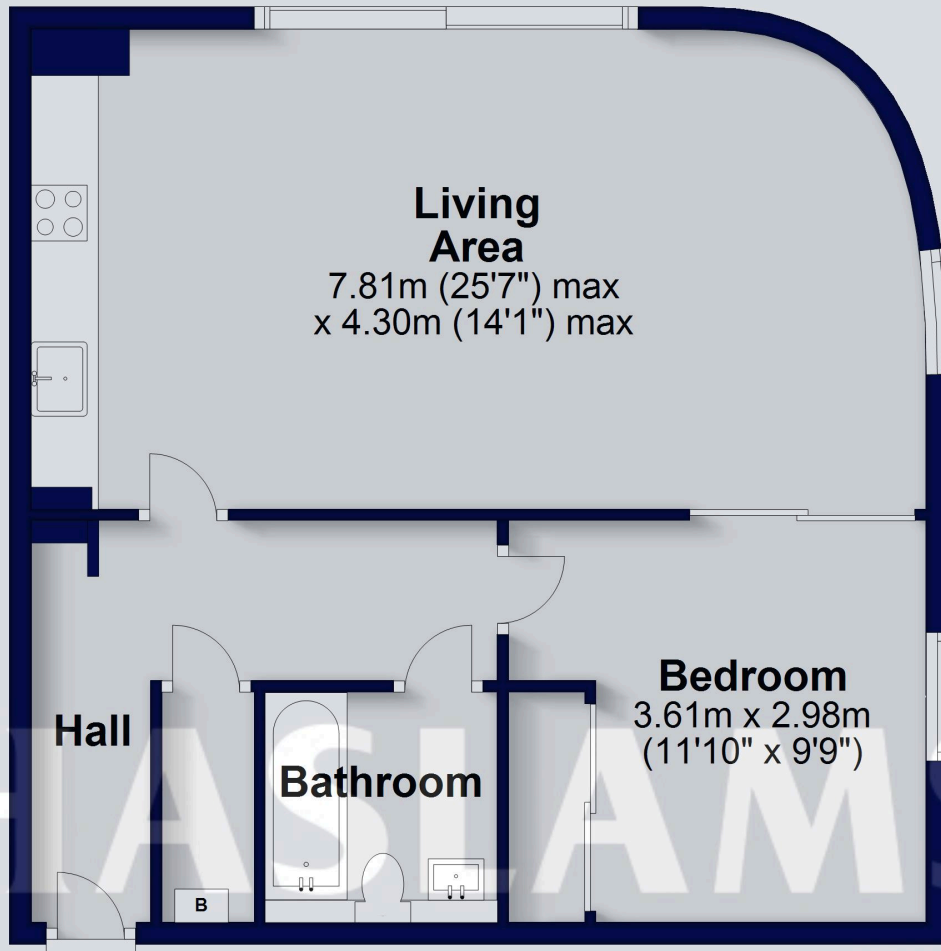
lettings@haslams.net www.haslams.net

Haslams Estate Agents Ltd, 159 Friar Street, Reading, Berkshire, RG1 1HE



Seventh Floor

Approx. 61.1 sq. metres (657.8 sq. feet)



Total area: approx. 61.1 sq. metres (657.8 sq. feet)

This floorplan is for illustrative purposes only and is not to scale. The total area includes all the areas shown.

Plan produced using PlanUp.