



Sheppard  
& Bear

Heath Mead | Heath | Cardiff | CF14 3PJ

£150,000



Sheppard & Bear

Heath Mead | Heath  
Cardiff | CF14 3PJ  
£150,000

Nestled in the charming area of Heath Mead, Cardiff, this two-bedroom semi detached house presents an exciting opportunity for cash buyers seeking a refurbishment project. While the property requires significant work, it holds immense potential to become a delightful home for a small family or a couple once completed.

The house features a spacious lounge/dining room, a kitchen, and a bathroom, providing a solid foundation for your renovation ideas. The property also boasts a driveway and a rear garden, offering outdoor space for relaxation or gardening enthusiasts.

Conveniently located just a stone's throw away from the University Hospital of Wales, this home benefits

- Ideal for cash buyers
  - Two bedrooms
  - Close to University Hospital
  - Near A48 and M4
  - Driveway and garden
- Needs refurbishment
  - Semi detached
  - Great transport links
  - No onward chain
  - Perfect project opportunity

Entrance hall

Kitchen

8'7 x 7'1 (2.62m x 2.16m)

Lounge/dining room

17'3 x 12'7 (5.26m x 3.84m)

First floor landing

Bedroom one

11'4 plus door recess x 12'6  
(3.45m plus door recess x  
3.81m)

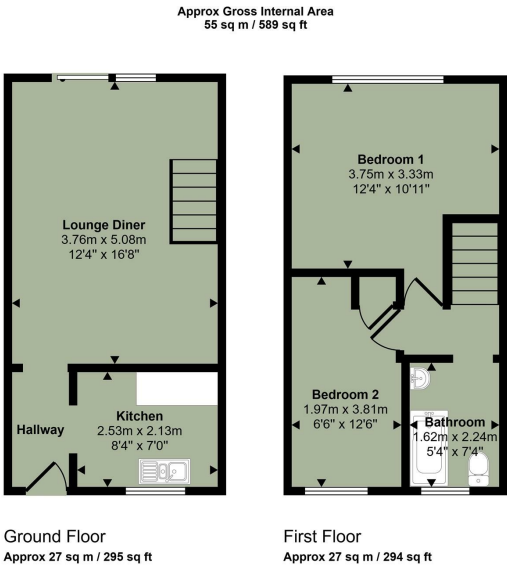
Bedroom two

13'0 max x 6'8 max (3.96m max x  
2.03m max)

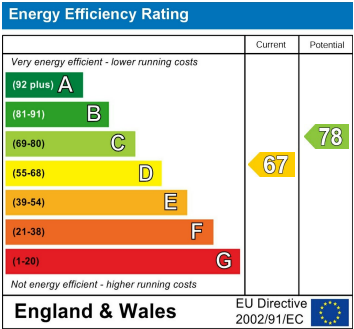
Bathroom

7'0 x 5'5 (2.13m x 1.65m)

Outside and parking



This floorplan is only for illustrative purposes and is not to scale. Measurements of rooms, doors, windows, and any items are approximate and no responsibility is taken for any error, omission or mis-statement. Icons of items such as bathroom suites are representations only and may not look like the real items. Made with Made Snappy 360.



Council Tax Band D  
EPC Rating D

Cyncoed  
Cardiff  
CF23 6SZ  
02921 051927  
gavin@sheppardandbear.com