



## Lyham Road, SW2

£590,000

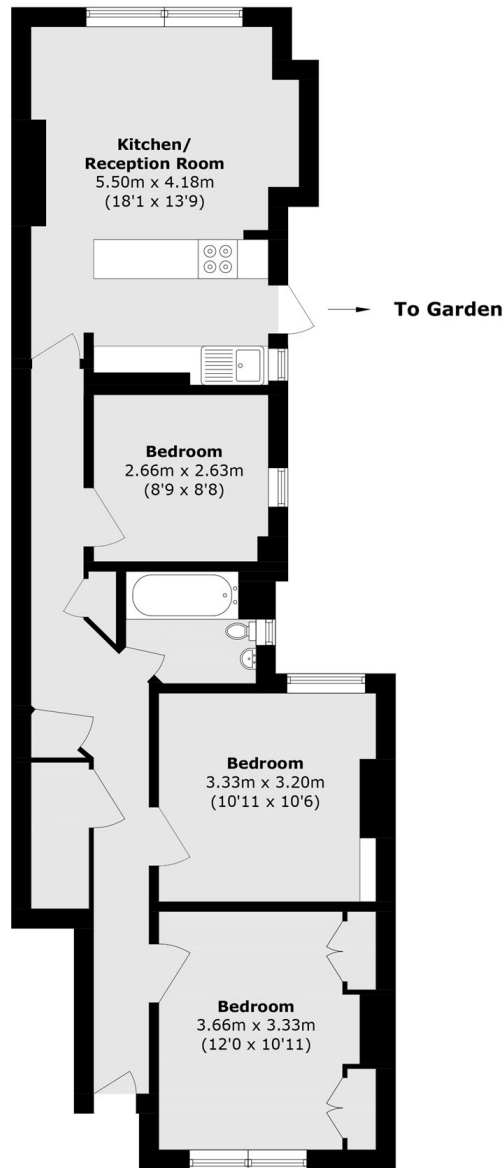
This superb ground floor period maisonette is finished to a high and tasteful standard throughout and extends to an impressive 756 sq.ft, with the added benefit of a private garden. The naturally bright and versatile accommodation comprises an open-plan reception room with an adjoining modern kitchen, a principal bedroom with fitted wardrobes, two further double bedrooms, and a contemporary bathroom.

Lyham Road is located close to the popular Abbeville Village, Clapham Common & Brixton. Transport links are excellent with regular bus services on Kings Avenue and both Clapham South and Clapham Common Stations (Northern Line).

### Features

- Period Maisonette
- Open Plan Reception Room
- Three Double Bedrooms
- Modern Bathroom
- Private Garden
- Long Lease

# Lyham Road, London, SW2



Total area (approx.): 70.3 sq. m (756.7 sq. ft)