



CHRIS MACSWEENEY POWERED BY **exp** TM UK

@ chris.macsweeney@exp.uk.com

chrismacsweeney.exp.uk.com

☎ 07468 48 88 18

Hoo Road, Meppershall

£300,000

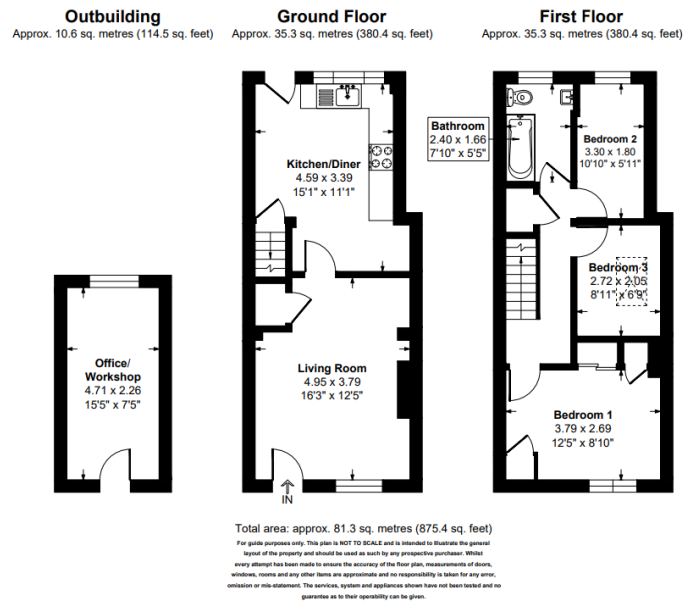
3 1 1

- A Delightful Cottage in a Secluded Location
- Well Presented Throughout
- THREE Bedrooms
- Large Kitchen/Diner
- Good Sized Lounge with Log Burner
- First Floor Bathroom
- Replacement Gas Boiler and Double Glazing
- Approx 120ft Rear Garden
- Large Office with Power and Light
- Quote Ref CM0245



A delightful three bedroom cottage with a 120ft rear garden and office, tucked away in a secluded location, in the highly regarded village of Meppershall. Viewing is highly recommended.





Score	Energy rating	Current	Potential
92+	A		
81-91	B		
69-80	C	69 C	79 C
55-68	D		
39-54	E		
21-38	F		
1-20	G		

eXp World UK Ltd is a registered company at Level 37, 25 Canada Square, London, E14 5LQ.

Registered company number is 12016573. VAT Registration Number is 327 4120 29