



CHURCH ROAD, SW19

£3,750 per month

Three bedrooms
Two bathrooms
Separate WC
Study
Gated development
Energy rating: d

@marshandparsons
marshandparsons.co.uk

MARSH &
PARSONS



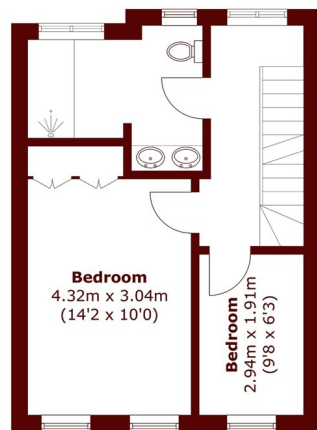
ABOUT THE PROPERTY

A three bedroom, two bathroom house in a beautiful gated development available to rent in Wimbledon Village. This well-located property is set over four floors, has off-street parking, an eat-in kitchen, study and a patio garden.

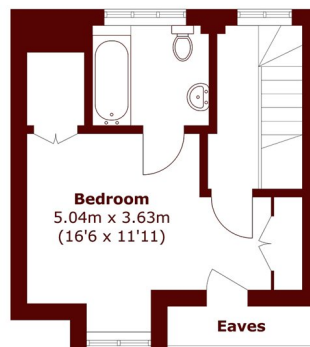
Cambisgate is located in the heart of Wimbledon Village and offers quick and easy access to all of the shops, pubs and restaurants the village has to offer.



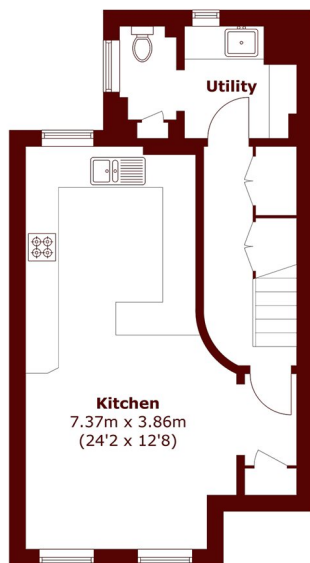
STEP INSIDE CHURCH ROAD



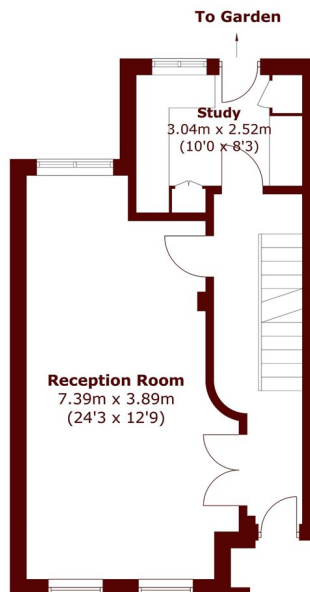
First Floor



Second Floor



Basement



Ground Floor

Total area (approx.): 144.7 sq. m (1,557.5 sq. ft)
(Including Basement / Excluding Eaves)

Wimbledon
020 8879 6661

Energy Rating: D We aim to make our particulars both accurate and reliable. However, they are not guaranteed; nor do they form part of an offer or contract. If you require clarification on any points then please contact us, especially if you're traveling some distance to view. Please note that appliances and heating systems have not been tested and therefore no warranties can be given as to their good working order

MARSH &
PARSONS