



Muirfield Close, Bloxwich
Walsall WS3 3XF

£325,000

Bloxwich

£325,000

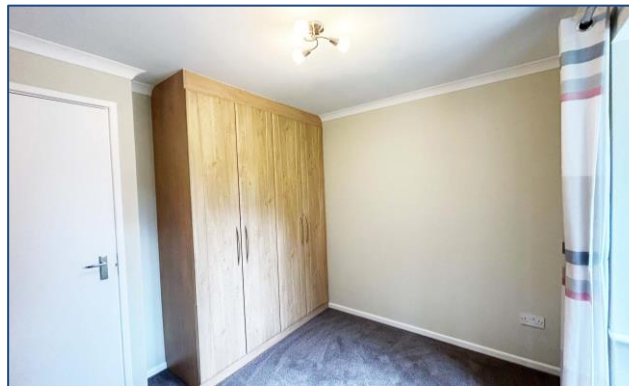


A beautifully presented modern detached bungalow, ideally situated on the highly sought-after Turnberry Estate in Bloxwich.

This stylish two-bedroom home offers spacious single-level living, perfect for a range of buyers seeking comfort and convenience. The property features a bright and welcoming lounge/ diner, a contemporary fitted kitchen, and two well-proportioned bedrooms, all finished to a high standard.

Outside, the home benefits from a private garden, ideal for relaxing or entertaining, along with a detached garage providing secure parking or additional storage.

Located in a desirable residential area with excellent local amenities and transport links nearby, this superb bungalow combines modern living with a peaceful setting—an opportunity not to be missed.





Property Specification

NO CHAIN
DETACHED GARAGE
TURNBERRY ESTATE
DETACHED BUNGALOW
BEAUTIFULLY PRESENTED

Lounge/ Diner
19' 7" into recess x 10' 2" (5.96m x 3.10m)

Kitchen
9' 7" x 7' 8" (2.92m x 2.34m)

Bedroom 1
11' 6" plus recess x 8' 9" (3.50m x 2.66m)

Bedroom 2
10' 4" into recess x 9' 2" (3.15m x 2.79m)

Shower Room

Detached Garage

Agent's Note:

Every care has been taken with the preparation of these Sales Particulars but they are for general guidance only and complete accuracy cannot be guaranteed. If there is any point which is of particular importance, professional verification should be sought. The mention of any fixtures, fittings and/or appliances does not imply they are in full efficient working order as they have not been tested. All dimensions are approximate. Photographs are reproduced for general information and it cannot be inferred that any item shown is included in the sale. These Sales Particulars do not constitute a contract or part of a contract. Came on the market:

Identity Verification Fee - We are required by law to conduct anti-money laundering checks on all those buying a property as part of our due diligence. As agents acting on behalf of the seller, we are required to verify the identity of all purchasers once an offer has been accepted, subject to contract. The initial checks are carried out on our behalf by Lifetime Legal. A non-refundable administration fee of £40 + VAT (£48 including VAT) applies which covers the cost of obtaining relevant data and any manual checks and monitoring which might be required. This fee will need to be paid by you in advance of us issuing a memorandum of sale, directly to Lifetime Legal, and is non-refundable.

Viewer's Note:

Services connected: All Services

Council tax band: C

Tenure: Freehold

